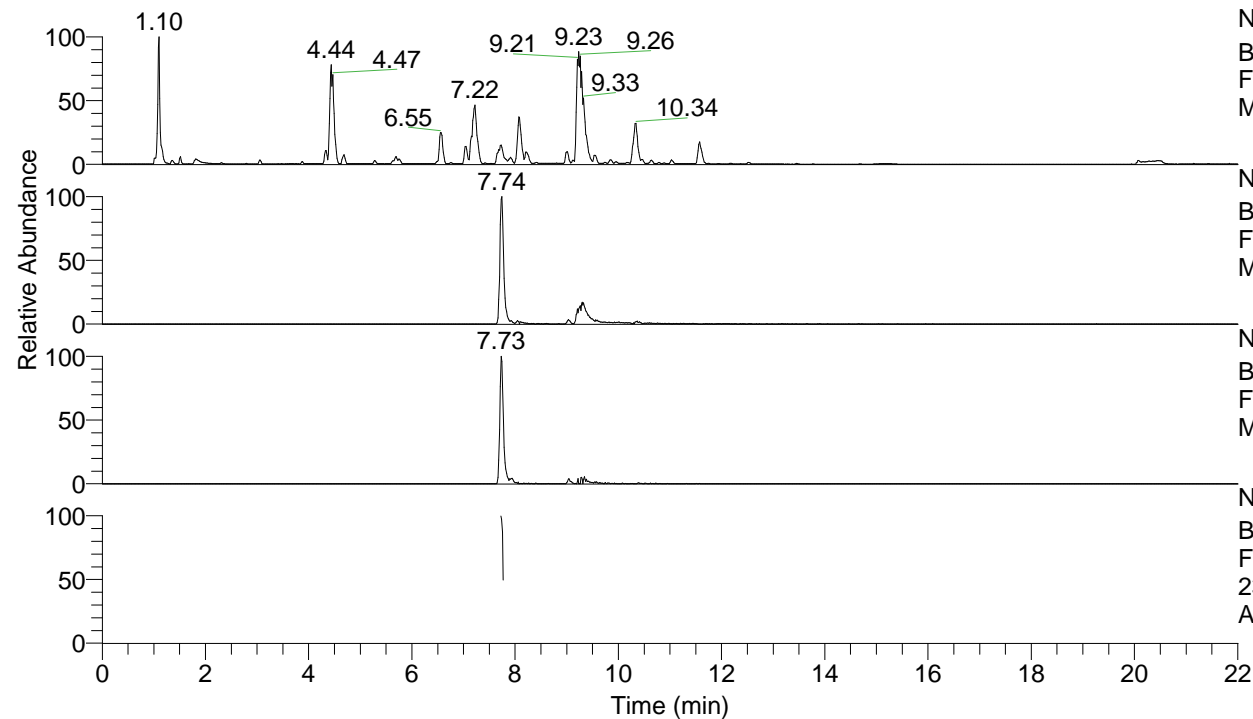


RT: 0.00 - 22.00



NL: 1.25E8
 Base Peak m/z= 100.00000-1500.00000 F:
 FTMS + p ESI Full ms [100.00-1500.00]
 MS Apotteri

NL: 1.54E6
 Base Peak m/z= 474.38966-474.39440 F:
 FTMS + p ESI Full ms [100.00-1500.00]
 MS Apotteri

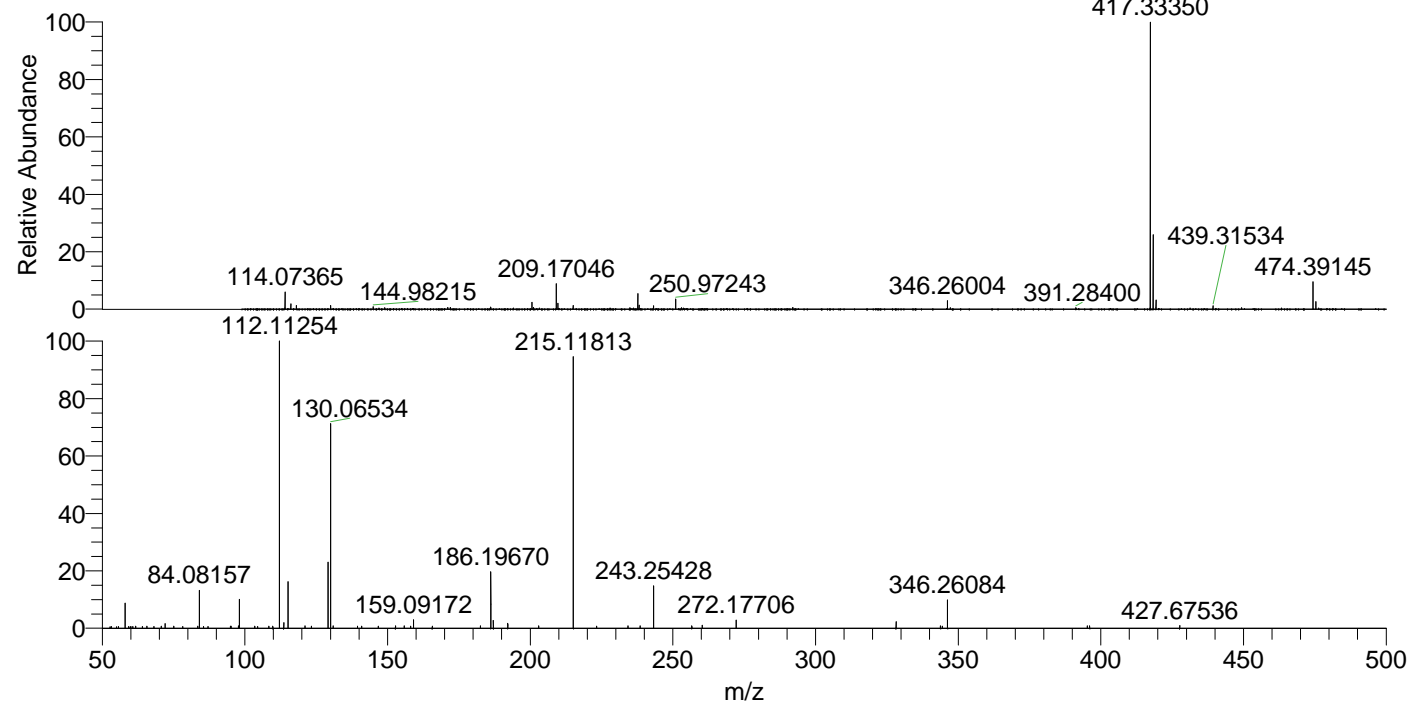
NL: 8.87E5
 Base Peak m/z= 237.69874-237.70112 F:
 FTMS + p ESI Full ms [100.00-1500.00]
 MS Apotteri

NL: 1.22E5
 Base Peak m/z= 50.00000-1500.00000 F:
 FTMS + p ESI d Full ms2
 237.70@hcd35.00 [50.00-505.00] MS
 Apotteri

Apotteri#3102-3120 RT: 7.72-7.77 AV: 4

F: FTMS + p ESI d Full ms2 237.70 ...
 m/z= 50.00000-1000.00000

m/z	Intensity	Relative
58.06605	8582.7	8.90
59.25658	624.1	0.65
61.70659	653.5	0.68
65.61711	664.3	0.69
70.67856	702.9	0.73
72.08156	1551.1	1.61
75.09262	715.1	0.74
83.53449	652.5	0.68
84.01909	640.2	0.66
84.08157	12852.1	13.33
94.90212	661.4	0.69
95.17375	698.0	0.72
97.72306	767.1	0.80
98.09715	9726.6	10.09
103.48854	679.8	0.71
104.51669	647.6	0.67
108.35342	651.1	0.68
109.79627	724.4	0.75
112.11254	96423.1	100.00
113.61777	1912.3	1.98
115.12349	15657.0	16.24
121.08629	763.4	0.79
123.29719	685.8	0.71
129.13878	22659.5	23.50
130.06534	69807.6	72.40
130.98512	797.3	0.83
139.49563	726.9	0.75
140.88912	662.9	0.69
146.75054	718.7	0.75
152.77699	797.9	0.83
155.81427	807.8	0.84
158.06083	764.3	0.79
159.09172	2885.2	2.99
165.67505	689.4	0.71
182.51569	807.4	0.84
186.11777	732.9	0.76
186.19670	18808.6	19.51
187.08766	2606.7	2.70
192.14281	1674.5	1.74
202.94217	775.4	0.80
215.11813	92008.1	95.42
223.24799	712.0	0.74
234.29368	806.7	0.84
238.57425	799.9	0.83
243.25428	14139.3	14.66
256.64971	750.6	0.78
260.28041	1050.7	1.09
272.17706	2709.4	2.81
328.25026	2256.4	2.34
343.79892	848.9	0.88
344.46441	722.4	0.75
346.26084	9472.5	9.82
395.26692	815.9	0.85
396.06661	813.2	0.84
427.67536	897.1	0.93



NL: 1.57E7
 Apotteri#3109 RT: 7.74
 AV: 1 T: FTMS + p ESI
 Full ms [100.00-1500.00]

NL: 9.56E4
 Apotteri#3009-3259 RT:
 7.72-7.77 AV: 4 F: FTMS
 + p ESI d Full ms2
 237.70@hcd35.00
 [50.00-505.00]