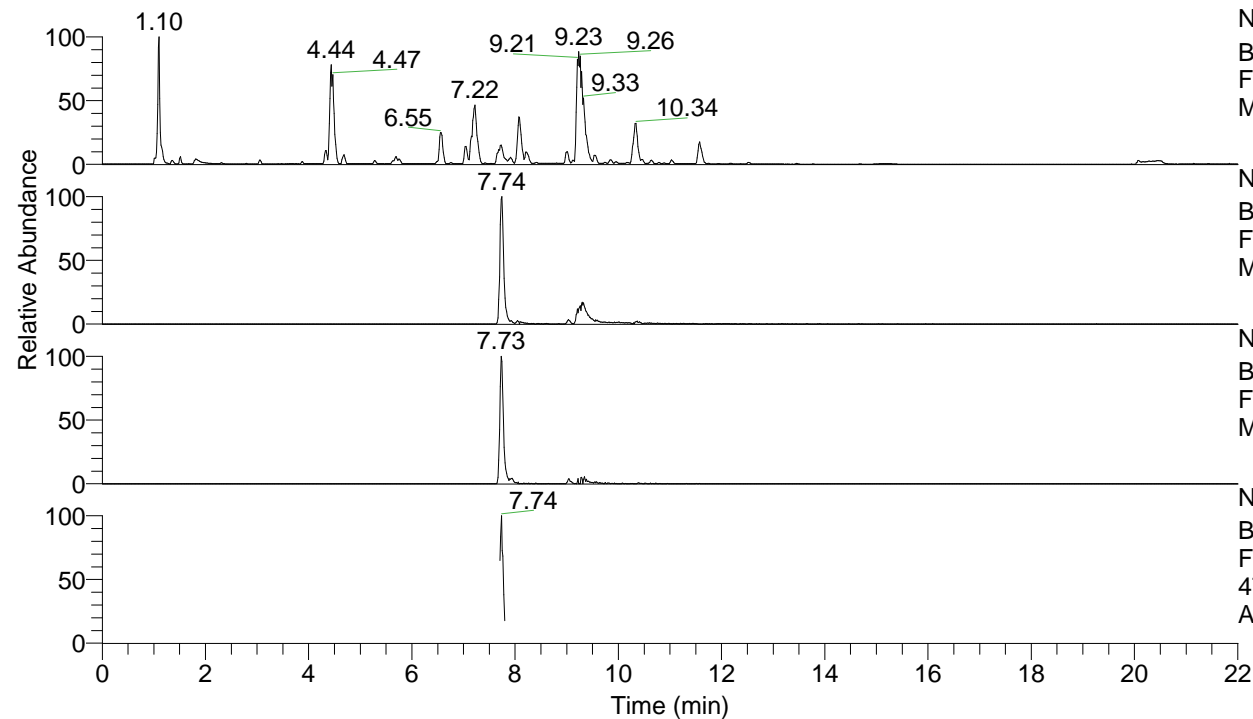


RT: 0.00 - 22.00



NL: 1.25E8
 Base Peak m/z= 100.00000-1500.00000 F:
 FTMS + p ESI Full ms [100.00-1500.00]
 MS Apotteri

NL: 1.54E6
 Base Peak m/z= 474.38966-474.39440 F:
 FTMS + p ESI Full ms [100.00-1500.00]
 MS Apotteri

NL: 8.87E5
 Base Peak m/z= 237.69874-237.70112 F:
 FTMS + p ESI Full ms [100.00-1500.00]
 MS Apotteri

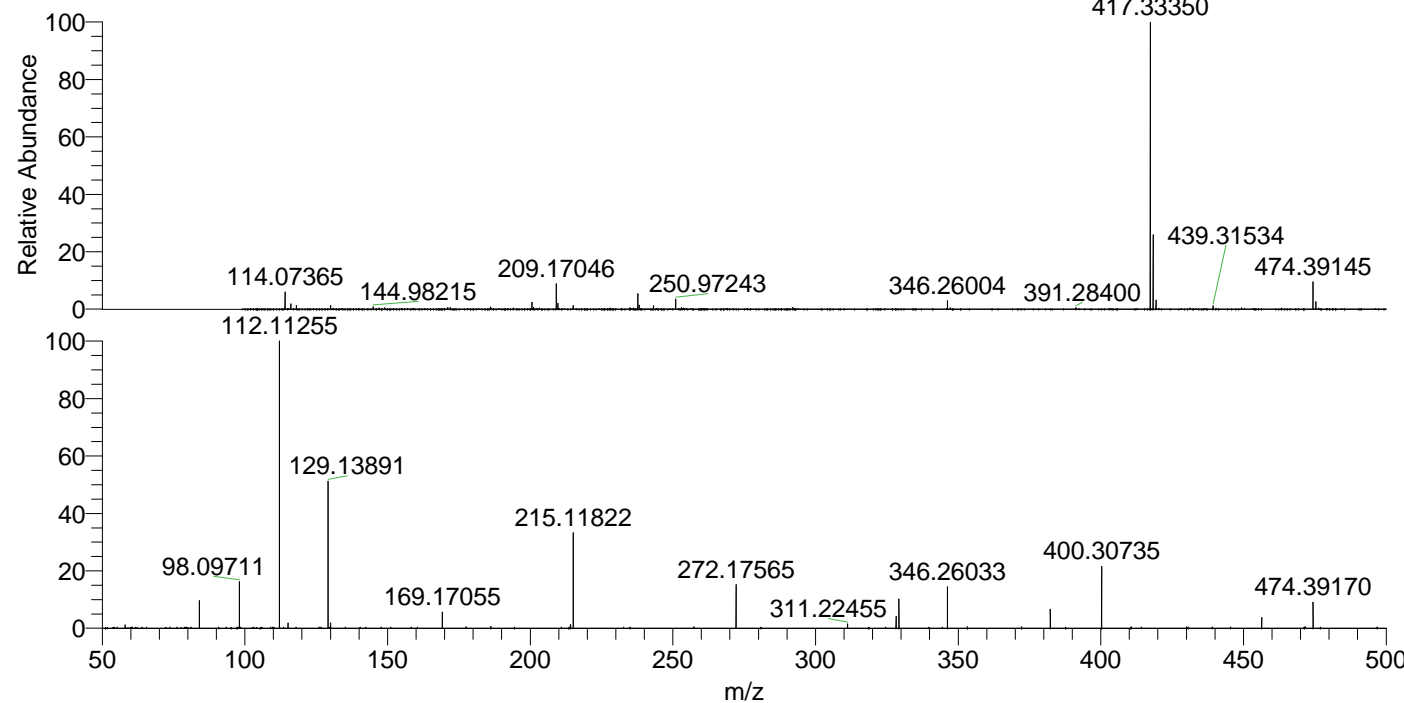
NL: 2.70E5
 Base Peak m/z= 50.00000-1500.00000 F:
 FTMS + p ESI d Full ms2
 474.39@hcd35.00 [50.00-500.00] MS
 Apotteri

Apotteri#3095-3123 RT: 7.71-7.78 AV: 6

F: FTMS + p ESI d Full ms2 474.39 ...

m/z= 50.00000-1000.00000

m/z	Intensity	Relative
58.06595	2161.7	1.20
84.08160	17857.8	9.94
98.09711	29360.3	16.34
112.11255	179720.0	100.00
115.12355	3319.5	1.85
129.13891	94628.2	52.65
130.06577	3328.0	1.85
169.17055	10509.9	5.85
186.19849	1147.1	0.64
214.13391	2303.8	1.28
215.11822	59883.5	33.32
272.17565	28078.1	15.62
311.22455	2696.7	1.50
328.24815	7626.7	4.24
329.23404	19067.8	10.61
346.26033	25976.9	14.45
353.23740	926.9	0.52
382.29742	12121.0	6.74
400.30735	39256.4	21.84
456.38215	6764.4	3.76
474.39170	16699.3	9.29



NL: 1.57E7
 Apotteri#3109 RT: 7.74
 AV: 1 T: FTMS + p ESI
 Full ms [100.00-1500.00]

NL: 1.79E5
 Apotteri#3092-3128 RT:
 7.71-7.78 AV: 6 F: FTMS
 + p ESI d Full ms2
 474.39@hcd35.00
 [50.00-500.00]