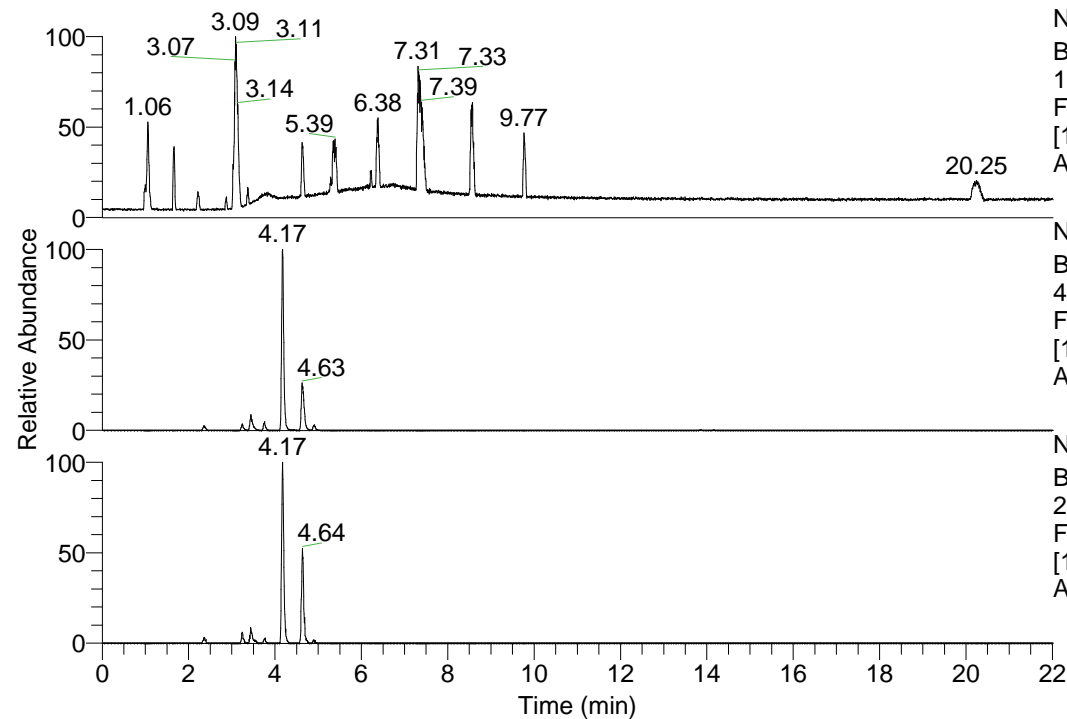


RT: 0.00 - 22.01



NL: 1.69E8  
 Base Peak m/z=  
 100.00000-1500.00000 F:  
 FTMS + p ESI Full ms  
 [100.00-1500.00] MS  
 Apotteri\_HDX

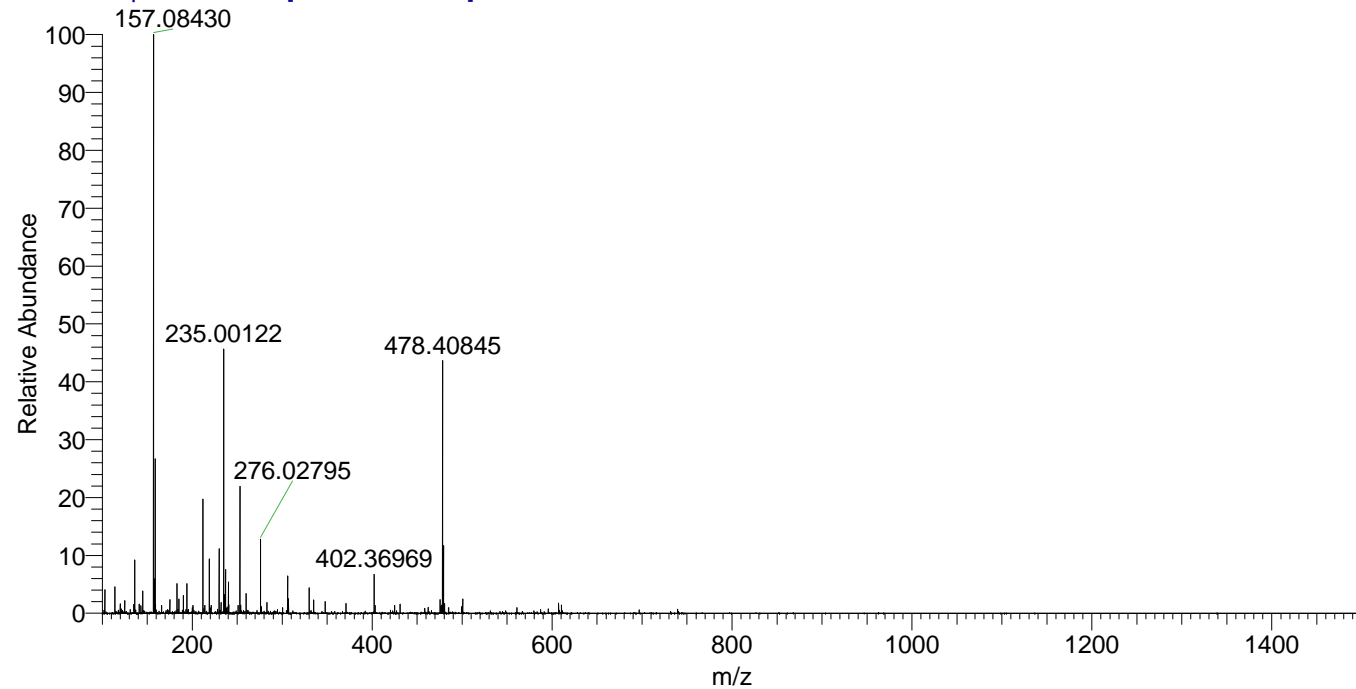
Apotteri\_HDX#650 RT: 4.17  
 T: FTMS + p ESI Full ms [100.00-1500.00]  
 m/z = 478.00000-479.00000

m/z	Intensity	Relative	Delta (ppm)	Composition
478.40845	8265055.5	100.00	1.52	C <sub>23</sub> H <sub>38</sub> <sup>2</sup> H <sub>8</sub> O <sub>4</sub> N <sub>6</sub>
			-1.71	C <sub>23</sub> H <sub>40</sub> <sup>2</sup> H <sub>7</sub> O <sub>4</sub> N <sub>6</sub>
			4.76	C <sub>23</sub> H <sub>36</sub> <sup>2</sup> H <sub>9</sub> O <sub>4</sub> N <sub>6</sub>
			-4.95	C <sub>23</sub> H <sub>42</sub> <sup>2</sup> H <sub>6</sub> O <sub>4</sub> N <sub>6</sub>

NL: 8.35E6  
 Base Peak m/z=  
 478.40433-478.40911 F:  
 FTMS + p ESI Full ms  
 [100.00-1500.00] MS  
 Apotteri\_HDX

NL: 1.11E6  
 Base Peak m/z=  
 240.20921-240.21161 F:  
 FTMS + p ESI Full ms  
 [100.00-1500.00] MS  
 Apotteri\_HDX

Apotteri\_HDX #650 RT: 4.17 AV: 1 NL: 1.81E7  
 T: FTMS + p ESI Full ms [100.00-1500.00]



Apotteri\_HDX #650 RT: 4.17 AV: 1 NL: 7.89E6  
 T: FTMS + p ESI Full ms [100.00-1500.00]

