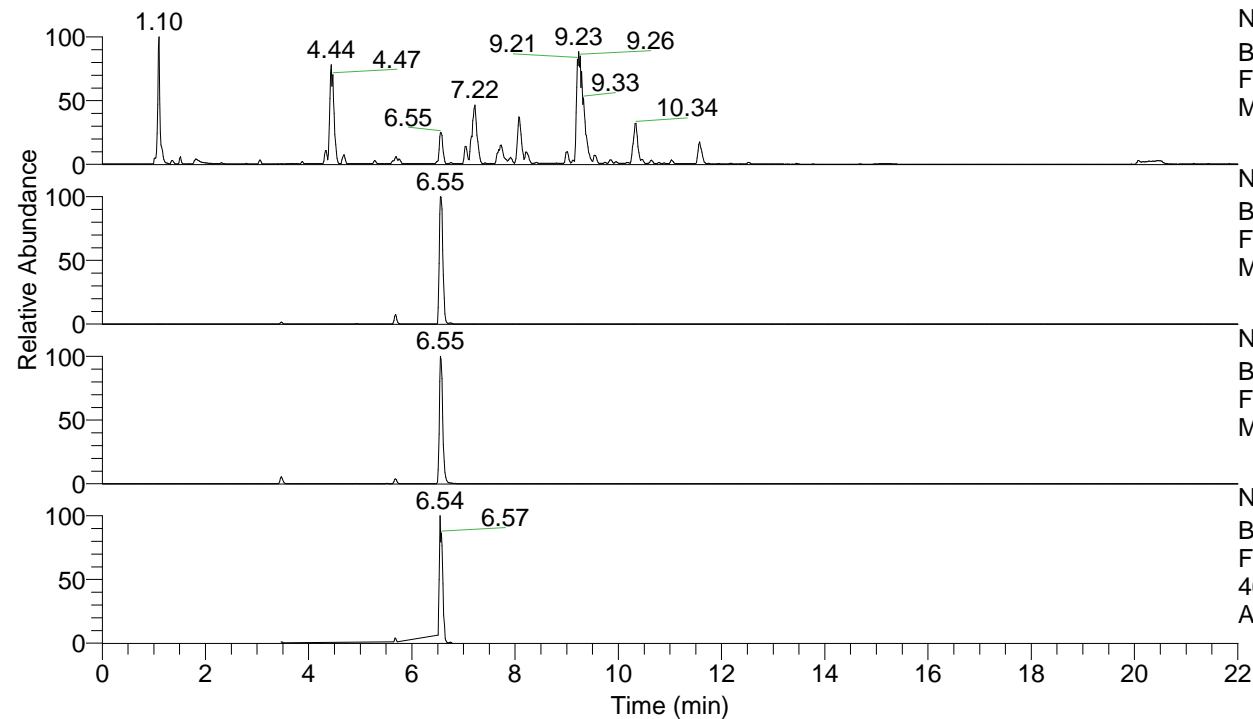


RT: 0.00 - 22.00



NL: 1.25E8
 Base Peak m/z= 100.00000-1500.00000 F:
 FTMS + p ESI Full ms [100.00-1500.00]
 MS Apotteri

NL: 3.13E7
 Base Peak m/z= 469.34788-469.35258 F:
 FTMS + p ESI Full ms [100.00-1500.00]
 MS Apotteri

NL: 1.38E7
 Base Peak m/z= 235.17785-235.18021 F:
 FTMS + p ESI Full ms [100.00-1500.00]
 MS Apotteri

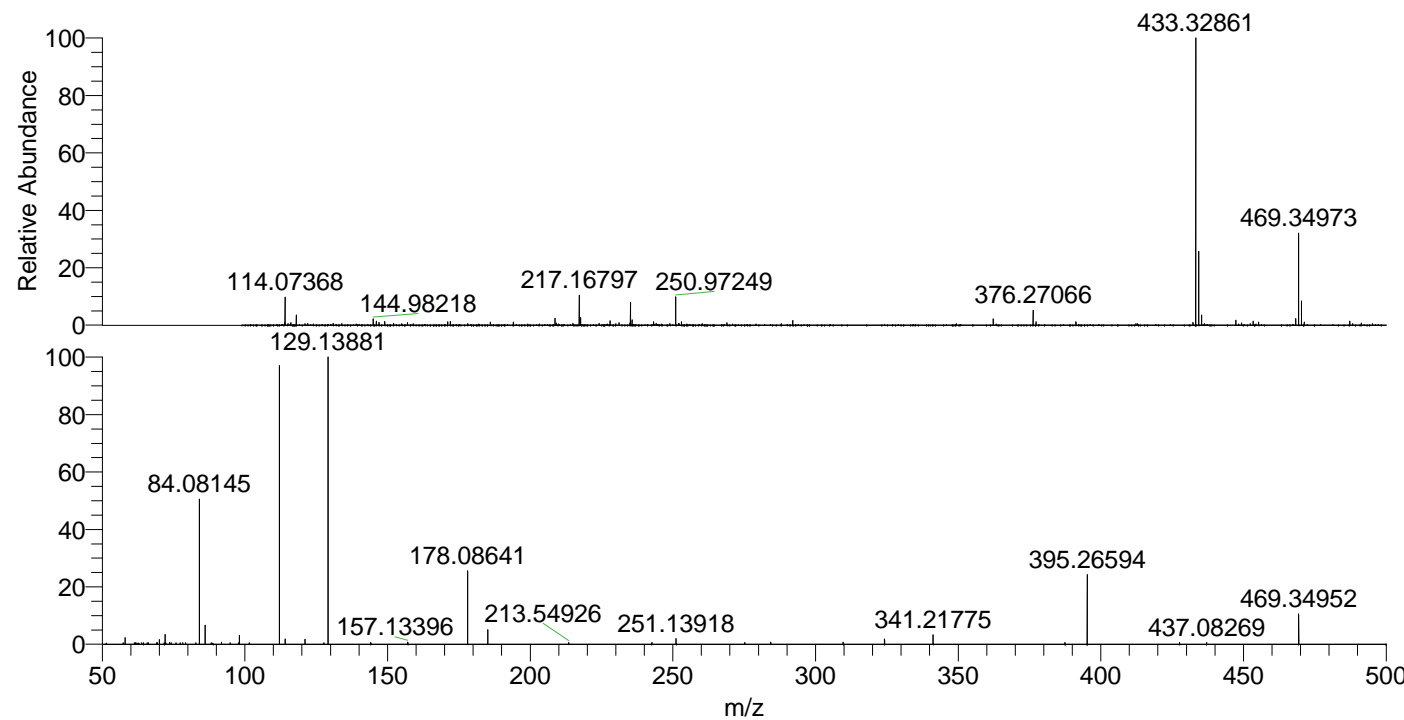
NL: 7.11E6
 Base Peak m/z= 50.00000-1500.00000 F:
 FTMS + p ESI d Full ms2
 469.35@hcd35.00 [50.00-495.00] MS
 Apotteri

Apotteri#2272-2289 RT: 5.66-5.70 AV: 4

F: FTMS + p ESI d Full ms2 469.35 ...

m/z= 50.00000-1000.00000

m/z	Intensity	Relative
57.30460	1035.9	0.53
58.06593	4216.2	2.16
63.83528	976.4	0.50
70.06601	3030.3	1.55
71.76242	985.3	0.51
72.08164	6495.0	3.33
73.66738	1102.2	0.57
84.08145	95913.6	49.20
86.06072	12966.8	6.65
91.75268	1428.2	0.73
98.09723	5714.7	2.93
101.50208	981.9	0.50
112.11254	184044.1	94.40
114.09189	3513.6	1.80
121.02921	3376.4	1.73
129.13881	194958.7	100.00
144.12693	1095.5	0.56
157.13396	1326.2	0.68
178.08641	48239.1	24.74
185.16539	9680.2	4.97
213.54926	1115.4	0.57
242.64019	1106.5	0.57
251.13918	3644.0	1.87
275.24547	1161.3	0.60
284.29388	1330.0	0.68
309.69450	1266.0	0.65
324.19153	3505.0	1.80
341.21775	6236.0	3.20
387.44253	1292.3	0.66
395.26594	45991.6	23.59
427.60883	1152.9	0.59
437.08269	1240.5	0.64
469.34952	19813.4	10.16



NL: 7.05E6
 Apotteri#2281 RT: 5.68
 AV: 1 T: FTMS + p ESI
 Full ms [100.00-1500.00]

NL: 1.89E5
 Apotteri#2269-2293 RT:
 5.66-5.70 AV: 4 F: FTMS
 + p ESI d Full ms2
 469.35@hcd35.00
 [50.00-495.00]