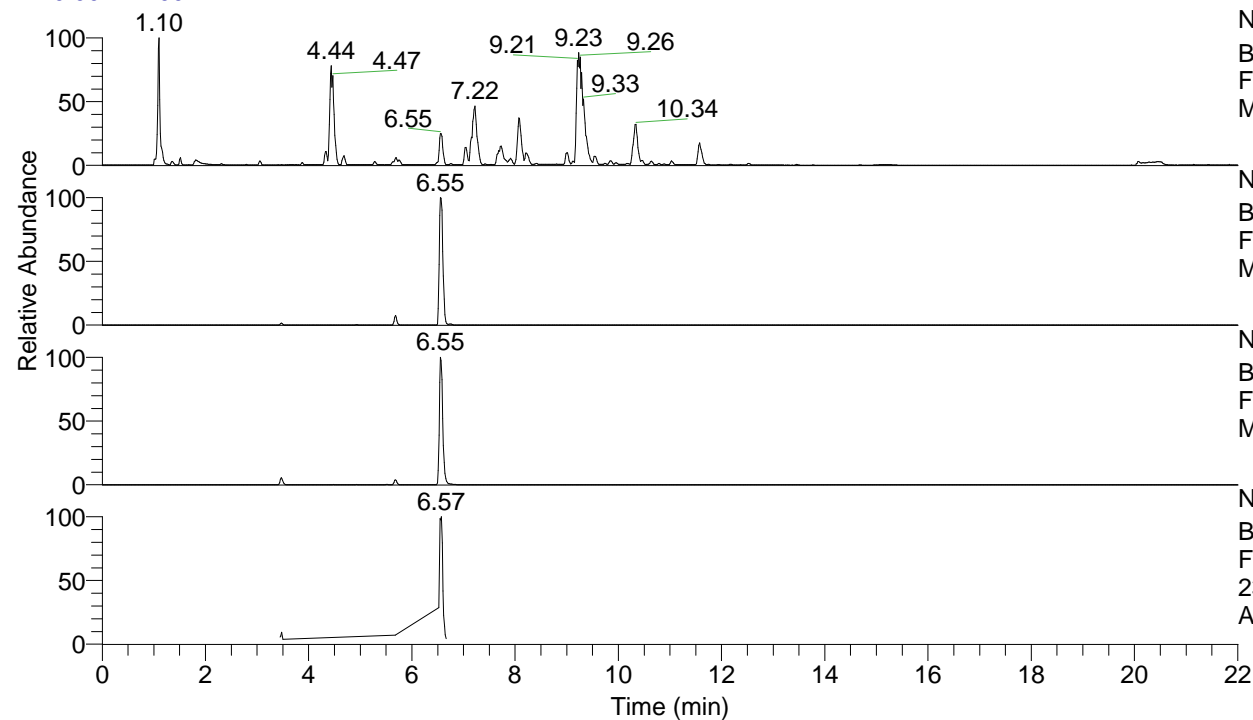


RT: 0.00 - 22.00



NL: 1.25E8
 Base Peak m/z= 100.00000-1500.00000 F:
 FTMS + p ESI Full ms [100.00-1500.00]
 MS Apotteri

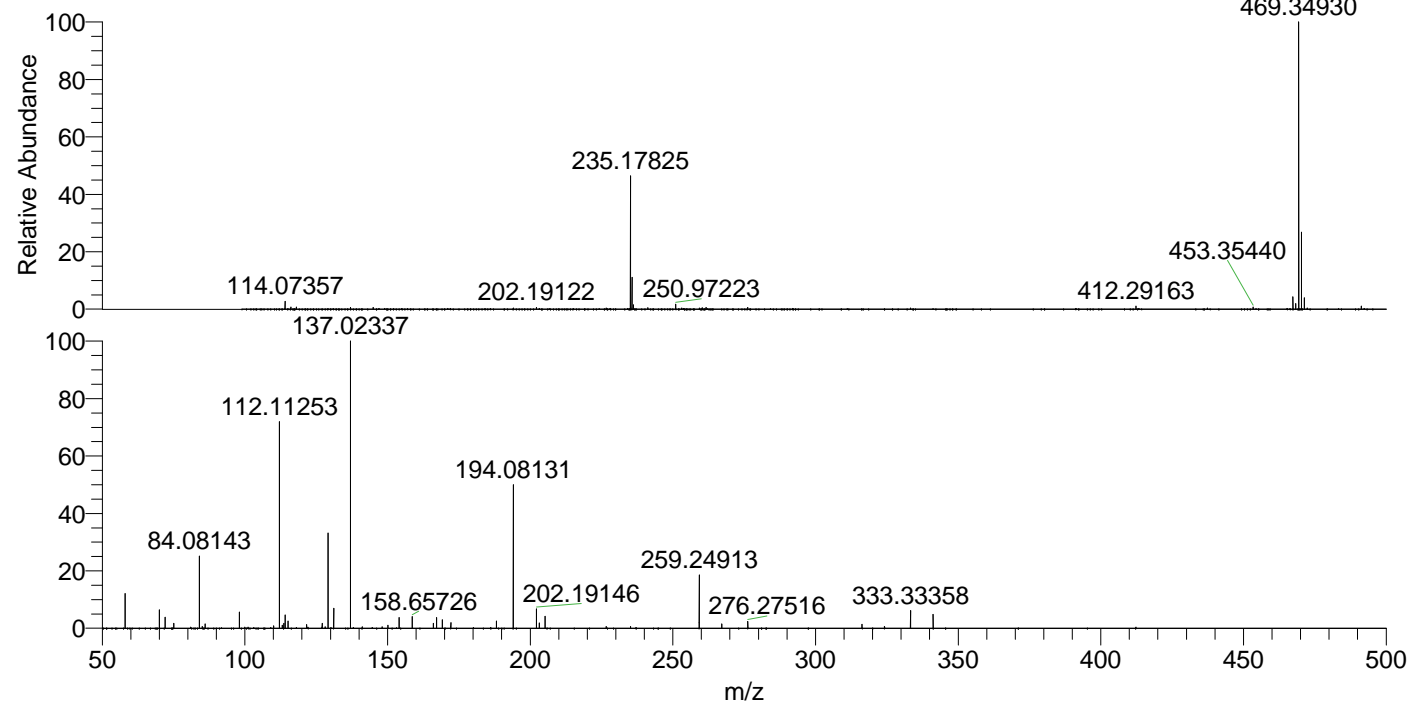
NL: 3.13E7
 Base Peak m/z= 469.34788-469.35258 F:
 FTMS + p ESI Full ms [100.00-1500.00]
 MS Apotteri

NL: 1.38E7
 Base Peak m/z= 235.17785-235.18021 F:
 FTMS + p ESI Full ms [100.00-1500.00]
 MS Apotteri

NL: 2.05E6
 Base Peak m/z= 50.00000-1500.00000 F:
 FTMS + p ESI d Full ms2
 235.18@hcd35.00 [50.00-500.00] MS
 Apotteri

Apotteri#2615-2649 RT: 6.52-6.60 AV: 7
 F: FTMS + p ESI d Full ms2 235.18@h ...
 m/z= 50.00000-1000.00000

m/z	Intensity	Relative
58.06601	171154.7	12.36
70.06592	89764.5	6.48
72.08156	55963.5	4.04
75.09236	24945.3	1.80
84.08143	357212.9	25.80
85.07661	8215.1	0.59
86.06072	23081.9	1.67
98.09704	81555.2	5.89
99.98761	8634.1	0.62
110.09686	12052.7	0.87
112.11253	1024144.9	73.96
113.10765	14119.8	1.02
113.61794	23902.0	1.73
114.09173	65638.4	4.74
115.12333	36964.2	2.67
121.61535	18151.8	1.31
127.12324	23666.2	1.71
129.13888	477263.9	34.47
131.11803	96289.8	6.95
137.02339	1384665.9	100.00
141.13879	8095.6	0.58
148.14453	7159.0	0.52
150.14417	14813.7	1.07
154.05004	52657.2	3.80
158.65731	55216.4	3.99
166.05019	24861.9	1.80
167.17038	53498.7	3.86
169.16982	41306.2	2.98
172.18083	27718.0	2.00
188.17604	35784.9	2.58
194.08130	697980.9	50.41
202.19148	93513.0	6.75
203.22293	25454.8	1.84
205.20253	57948.0	4.18
226.66539	8321.5	0.60
235.17836	8321.5	0.60
259.24947	265657.1	19.19
267.13375	19778.2	1.43
276.27542	33460.5	2.42
316.30683	18209.2	1.32
324.19270	8574.2	0.62
333.33380	84970.7	6.14
341.21920	67931.7	4.91



NL: 2.97E7
 Apotteri#2629 RT: 6.55
 AV: 1 T: FTMS + p ESI
 Full ms [100.00-1500.00]

NL: 1.55E6
 Apotteri#2617-2649 RT:
 6.53-6.60 AV: 6 F: FTMS
 + p ESI d Full ms2
 235.18@hcd35.00
 [50.00-500.00]