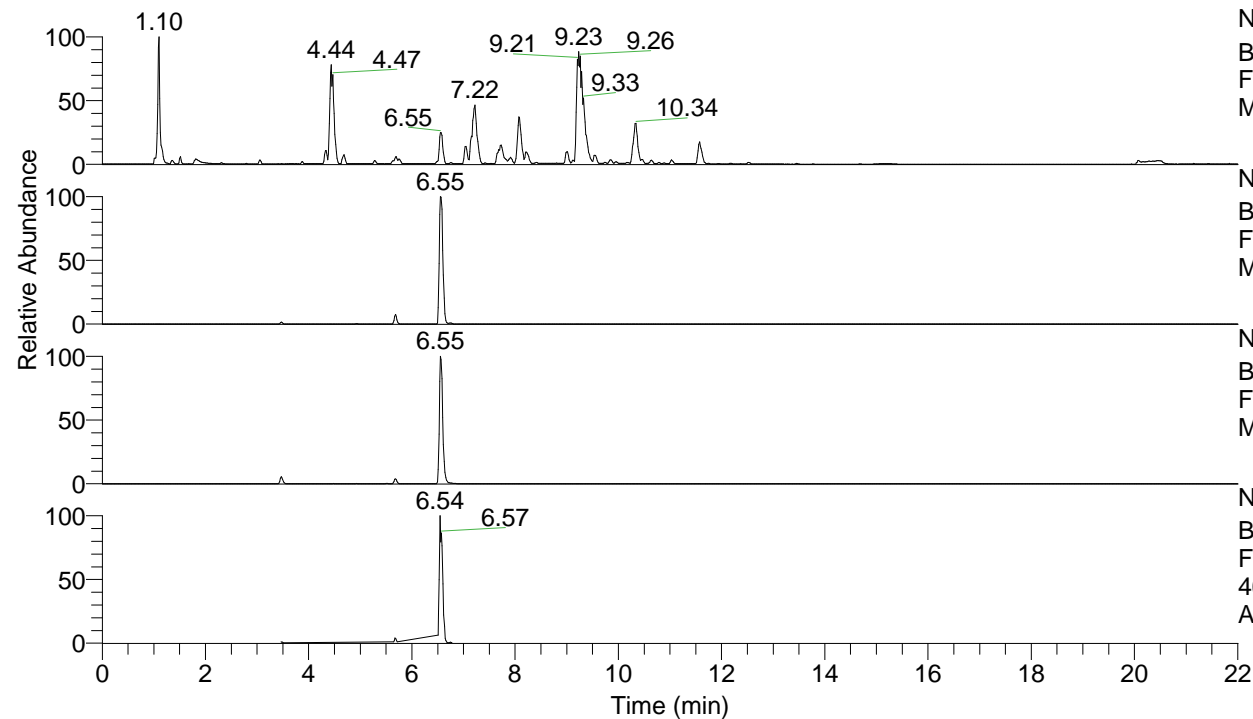


RT: 0.00 - 22.00



NL: 1.25E8
 Base Peak m/z= 100.00000-1500.00000 F:
 FTMS + p ESI Full ms [100.00-1500.00]
 MS Apotteri

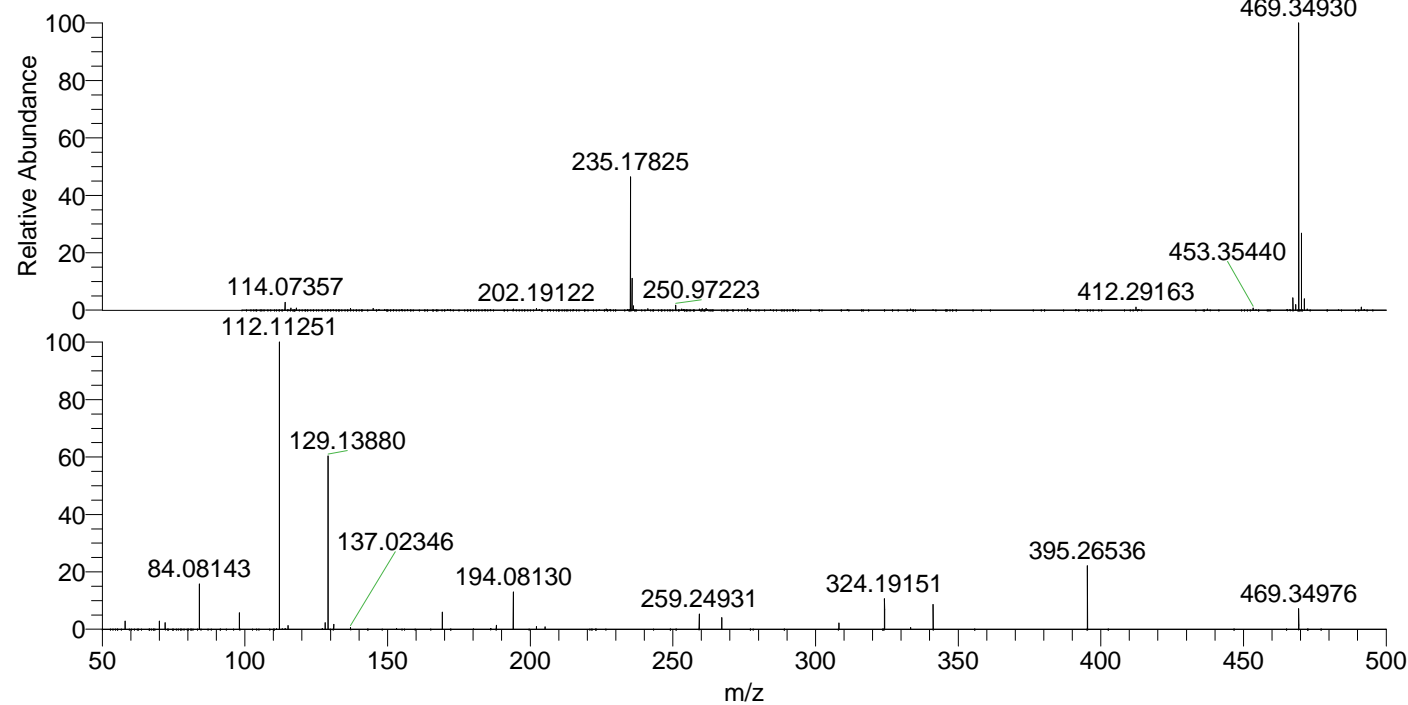
NL: 3.13E7
 Base Peak m/z= 469.34788-469.35258 F:
 FTMS + p ESI Full ms [100.00-1500.00]
 MS Apotteri

NL: 1.38E7
 Base Peak m/z= 235.17785-235.18021 F:
 FTMS + p ESI Full ms [100.00-1500.00]
 MS Apotteri

NL: 7.11E6
 Base Peak m/z= 50.00000-1500.00000 F:
 FTMS + p ESI d Full ms2
 469.35@hcd35.00 [50.00-495.00] MS
 Apotteri

Apotteri#2614-2648 RT: 6.52-6.60 AV: 7
 F: FTMS + p ESI d Full ms2 469.35@h ...
 m/z= 50.00000-1000.00000

m/z	Intensity	Relative
58.06597	125905.1	2.88
70.06590	122731.2	2.80
72.08154	101941.4	2.33
84.08143	694636.2	15.86
98.09694	259409.6	5.92
112.11251	4378898.0	100.00
115.12334	54014.9	1.23
128.10723	98304.1	2.24
129.13880	2731611.3	62.38
131.11820	73186.9	1.67
137.02346	28730.7	0.66
169.16996	263332.8	6.01
188.17617	59765.2	1.36
194.08130	566898.3	12.95
202.19163	39307.0	0.90
205.20264	36423.3	0.83
259.24931	238982.8	5.46
267.13390	178615.1	4.08
308.19688	96485.3	2.20
324.19151	477215.8	10.90
333.33338	27818.1	0.64
341.21831	378910.4	8.65
395.26536	971755.1	22.19
469.34976	313873.8	7.17



NL: 2.97E7
 Apotteri#2629 RT: 6.55
 AV: 1 T: FTMS + p ESI
 Full ms [100.00-1500.00]

NL: 4.36E6
 Apotteri#2614-2653 RT:
 6.52-6.60 AV: 7 F: FTMS
 + p ESI d Full ms2
 469.35@hcd35.00
 [50.00-495.00]