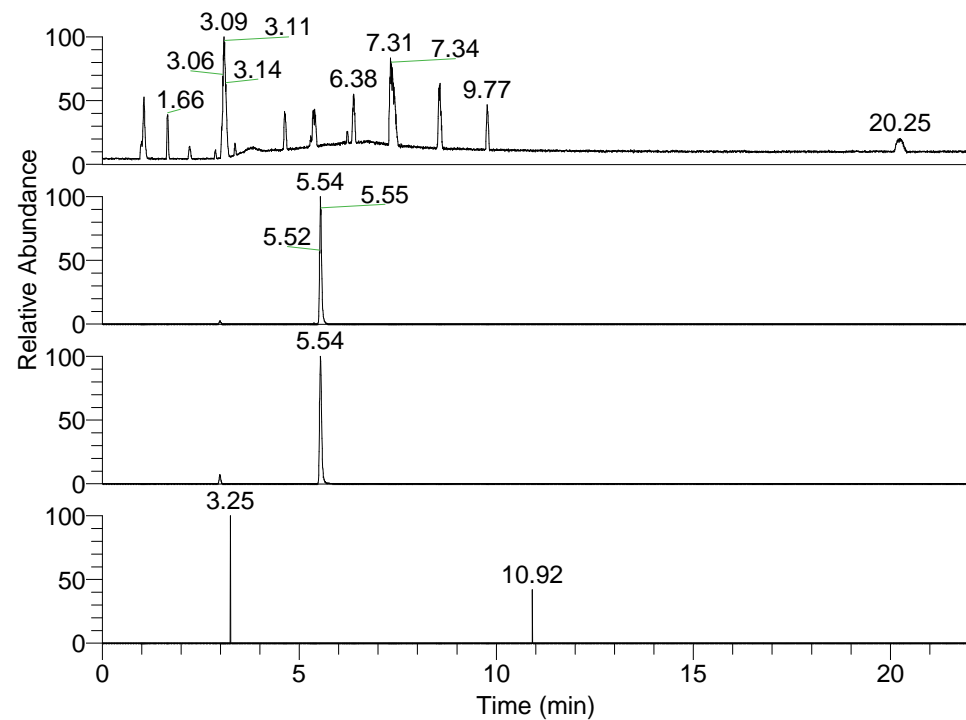


RT: 0.00 - 22.01



NL: 1.69E8  
 Base Peak m/z=  
 100.00000-1500.00000 F: FTMS + p  
 ESI Full ms [100.00-1500.00] MS  
 Apotteri\_HDX

NL: 1.93E6  
 Base Peak m/z=  
 474.39027-474.39501 F: FTMS + p  
 ESI Full ms [100.00-1500.00] MS  
 Apotteri\_HDX

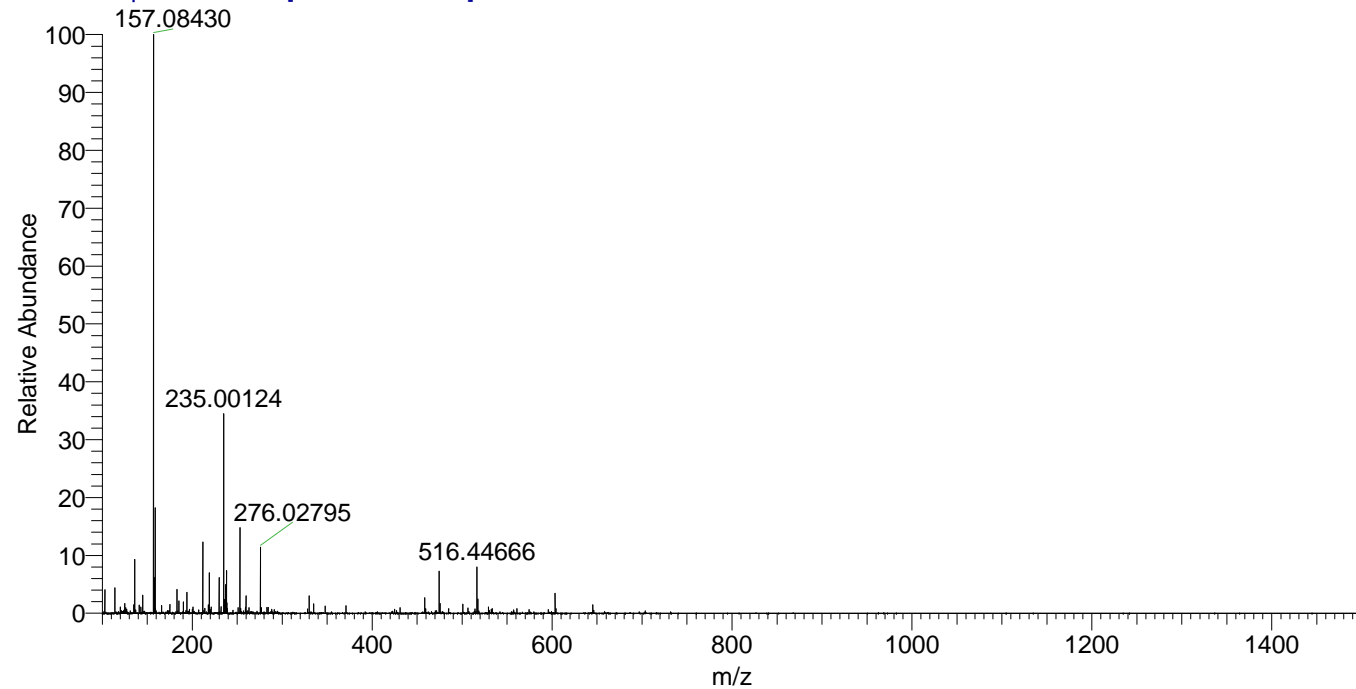
NL: 1.95E6  
 Base Peak m/z=  
 238.20218-238.20456 F: FTMS + p  
 ESI Full ms [100.00-1500.00] MS  
 Apotteri\_HDX

NL: 6.25E3  
 Base Peak m/z=  
 589.38883-589.39473 F: FTMS + p  
 ESI Full ms [100.00-1500.00] MS  
 Apotteri\_HDX

Apotteri\_HDX#878 RT: 5.54  
 T: FTMS + p ESI Full ms [100.00-1500.00]  
 m/z= 474.00000-475.00000

m/z	Intensity	Relative	Delta (ppm)	Composition
474.39429	1930078.4	100.00	1.36	C <sub>24</sub> H <sub>42</sub> <sup>2</sup> H <sub>5</sub> O <sub>4</sub> N <sub>5</sub>
			-1.90	C <sub>24</sub> H <sub>44</sub> <sup>2</sup> H <sub>4</sub> O <sub>4</sub> N <sub>5</sub>
			4.63	C <sub>24</sub> H <sub>40</sub> <sup>2</sup> H <sub>6</sub> O <sub>4</sub> N <sub>5</sub>

Apotteri\_HDX #878 RT: 5.54 AV: 1 NL: 2.63E7  
 T: FTMS + p ESI Full ms [100.00-1500.00]



Apotteri\_HDX #878 RT: 5.54 AV: 1 NL: 1.92E6  
 T: FTMS + p ESI Full ms [100.00-1500.00]

