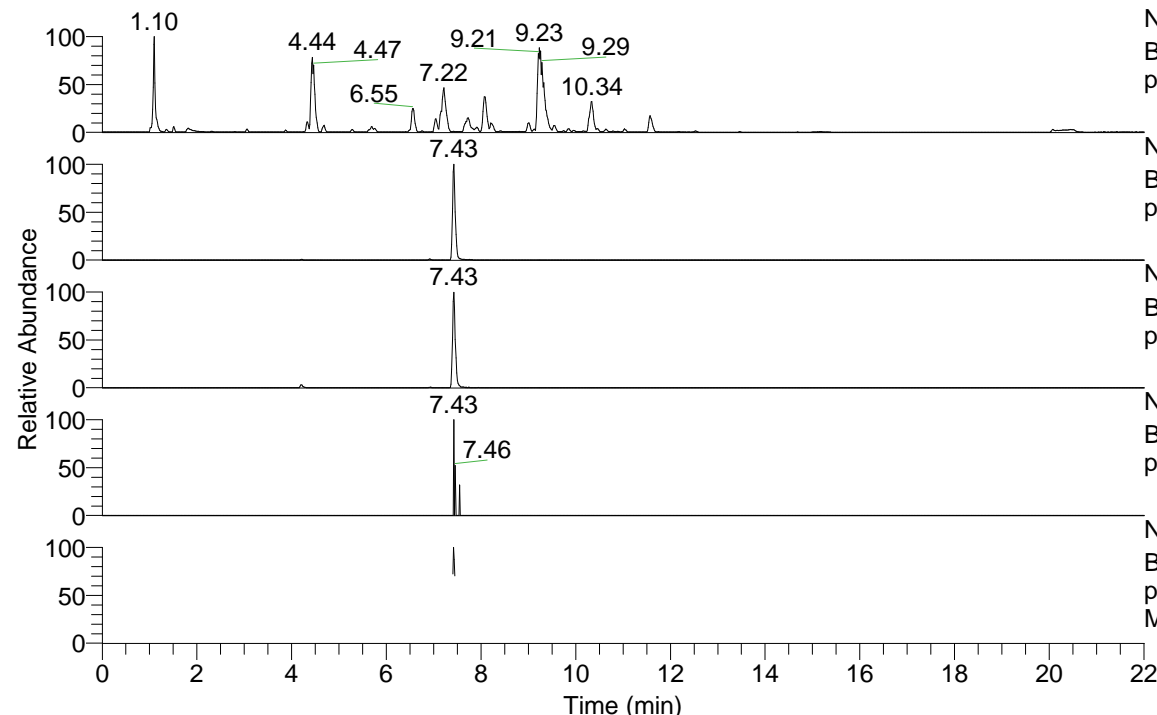


RT: 0.00 - 22.00



NL: 1.25E8
 Base Peak m/z= 100.00000-1500.00000 F: FTMS +
 p ESI Full ms [100.00-1500.00] MS Apotteri

NL: 1.54E6
 Base Peak m/z= 468.35264-468.35732 F: FTMS +
 p ESI Full ms [100.00-1500.00] MS Apotteri

NL: 9.02E5
 Base Peak m/z= 234.68023-234.68257 F: FTMS +
 p ESI Full ms [100.00-1500.00] MS Apotteri

NL: 3.36E3
 Base Peak m/z= 582.34493-582.35075 F: FTMS +
 p ESI Full ms [100.00-1500.00] MS Apotteri

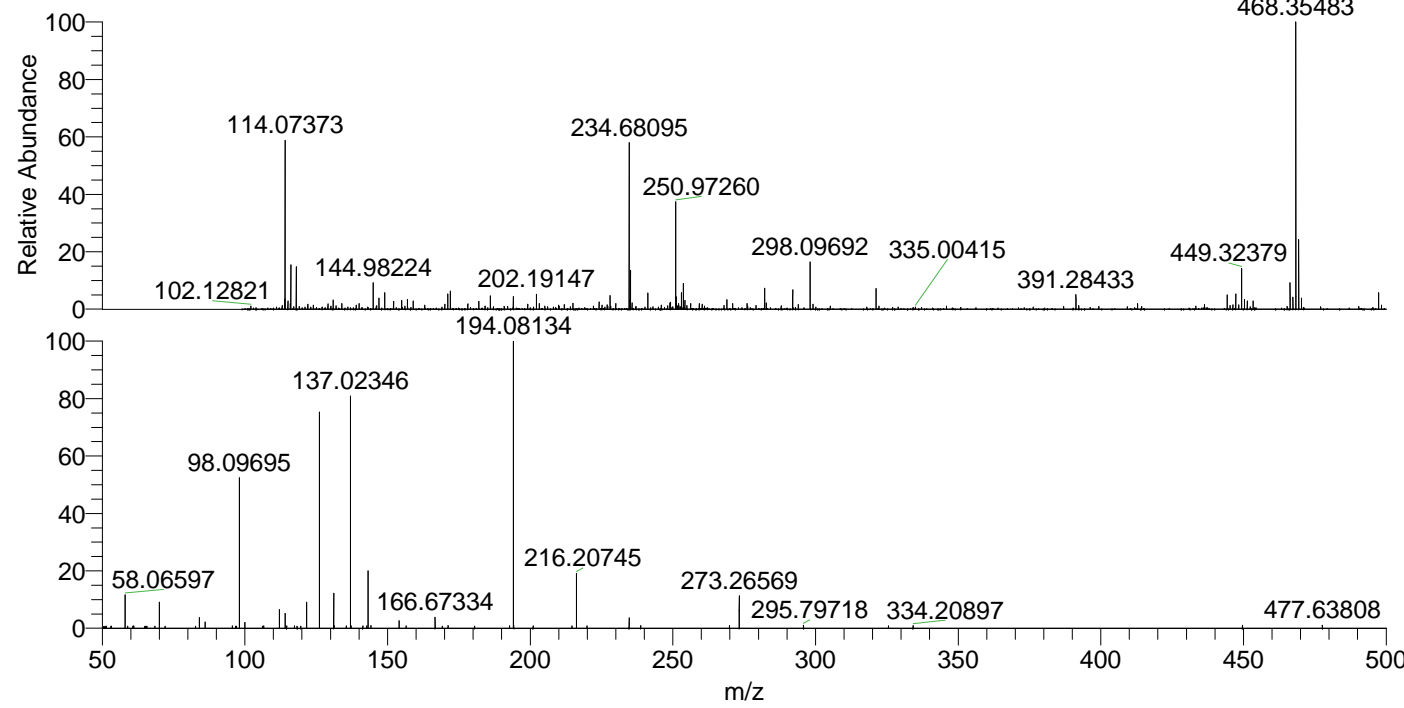
NL: 1.07E5
 Base Peak m/z= 50.00000-1500.00000 F: FTMS +
 p ESI d Full ms2 234.68@hcd35.00 [50.00-495.00]
 MS Apotteri

Apotteri#2975-2992 RT: 7.41-7.45 AV: 4

F: FTMS + p ESI d Full ms2 234.68 ...

m/z= 50.00000-1000.00000

m/z	Intensity	Relative
58.06597	9998.2	11.76
58.96143	649.9	0.76
61.09840	690.0	0.81
65.07791	623.3	0.73
65.68723	613.9	0.72
70.06588	7746.9	9.11
84.08154	3255.8	3.83
86.09722	1893.9	2.23
95.57483	711.2	0.84
96.72092	652.9	0.77
97.02997	651.6	0.77
98.09695	45893.2	53.97
99.98777	1737.9	2.04
106.62740	750.4	0.88
112.11255	5586.1	6.57
114.09175	4545.0	5.35
114.62571	696.4	0.82
117.39195	757.3	0.89
118.32006	648.6	0.76
119.55716	660.3	0.78
121.63362	8035.2	9.45
126.11979	1121.3	1.32
126.12796	64425.8	75.77
131.11831	10454.3	12.29
131.31151	800.7	0.94
135.49916	745.2	0.88
137.02346	69294.6	81.49
137.22179	725.2	0.85
141.32775	735.4	0.86
142.75412	671.9	0.79
143.15449	17047.5	20.05
144.14421	806.6	0.95
154.05020	2223.0	2.61
156.48652	715.5	0.84
166.67334	3273.7	3.85
166.68738	701.6	0.83
169.18301	666.3	0.78
171.18589	825.0	0.97
180.48300	684.1	0.80
192.77334	690.6	0.81
194.08134	85030.9	100.00
194.26715	890.3	1.05
201.01611	720.8	0.85
214.65085	741.6	0.87
216.20745	16550.8	19.46
219.92151	731.9	0.86
234.68184	3150.4	3.70
238.71216	819.3	0.96
269.84191	779.9	0.92
273.26569	9740.8	11.46
295.79718	876.5	1.03
325.57471	768.9	0.90
334.20897	836.7	0.98
449.65790	884.7	1.04
477.63808	887.5	1.04



NL: 1.54E6
 Apotteri#2983 RT: 7.43
 AV: 1 T: FTMS + p ESI
 Full ms [100.00-1500.00]

NL: 8.50E4
 Apotteri#2921-3122 RT:
 7.41-7.45 AV: 4 F: FTMS
 + p ESI d Full ms2
 234.68@hcd35.00
 [50.00-495.00]