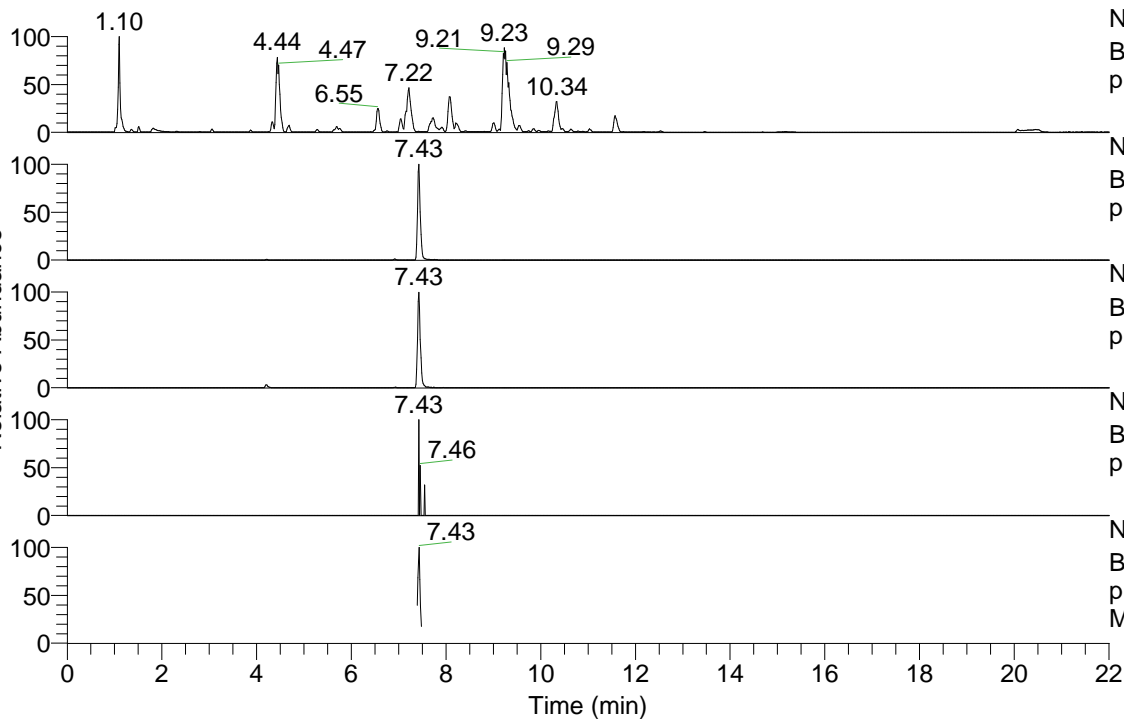


RT: 0.00 - 22.00



NL: 1.25E8  
 Base Peak m/z= 100.00000-1500.00000 F: FTMS +  
 p ESI Full ms [100.00-1500.00] MS Apotteri

NL: 1.54E6  
 Base Peak m/z= 468.35264-468.35732 F: FTMS +  
 p ESI Full ms [100.00-1500.00] MS Apotteri

NL: 9.02E5  
 Base Peak m/z= 234.68023-234.68257 F: FTMS +  
 p ESI Full ms [100.00-1500.00] MS Apotteri

NL: 3.36E3  
 Base Peak m/z= 582.34493-582.35075 F: FTMS +  
 p ESI Full ms [100.00-1500.00] MS Apotteri

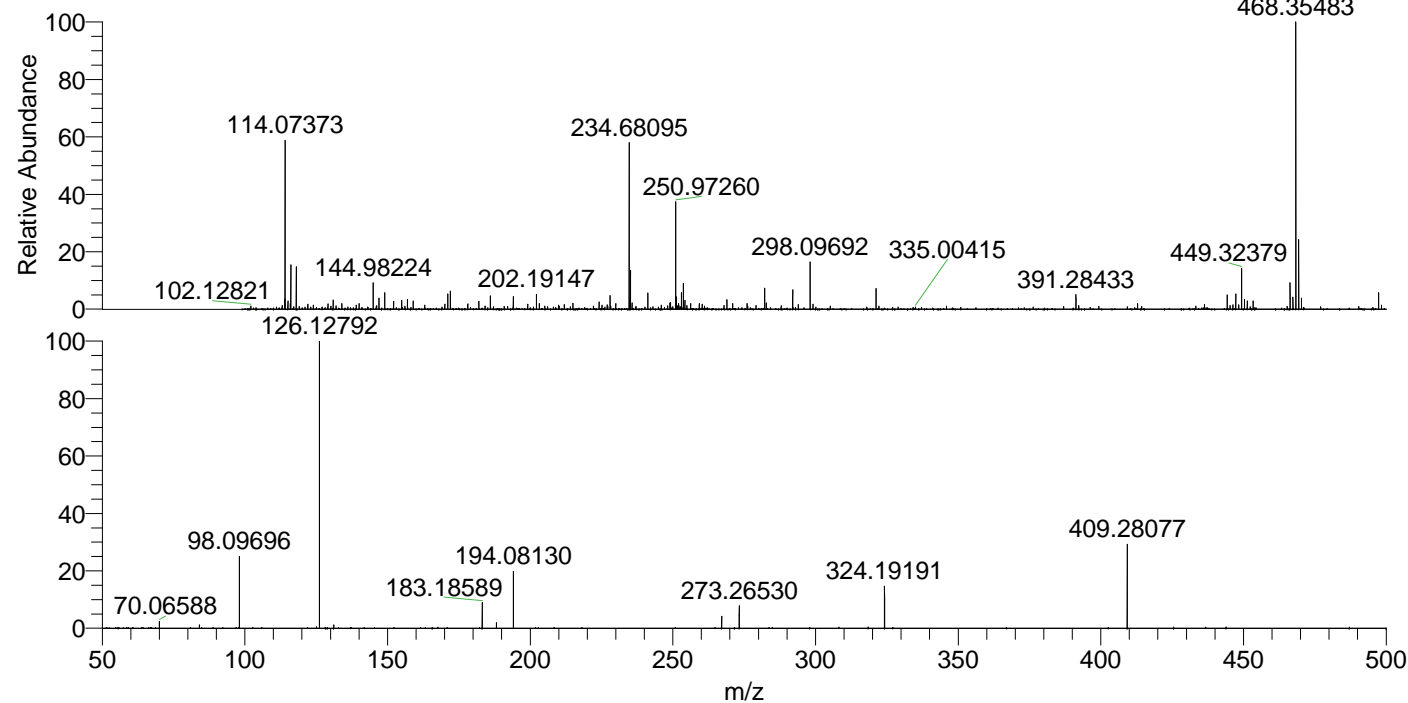
NL: 3.92E5  
 Base Peak m/z= 50.00000-1500.00000 F: FTMS +  
 p ESI d Full ms2 468.35@hcd35.00 [50.00-495.00]  
 MS Apotteri

Apotteri#2970-2996 RT: 7.39-7.46 AV: 6

F: FTMS + p ESI d Full ms2 468.35 ...

m/z= 50.00000-1000.00000

m/z	Intensity	Relative
70.06588	5917.8	2.43
84.08127	2781.2	1.14
98.09696	61229.3	25.18
126.12792	243171.0	100.00
131.11822	2909.1	1.20
183.18589	22073.6	9.08
188.17602	4615.4	1.90
194.08130	47634.7	19.59
267.13395	10270.3	4.22
273.26530	19078.2	7.85
324.19191	36446.2	14.99
409.28077	71930.5	29.58



NL: 1.54E6  
 Apotteri#2983 RT: 7.43  
 AV: 1 T: FTMS + p ESI  
 Full ms [100.00-1500.00]

NL: 2.40E5  
 Apotteri#2970-2998 RT:  
 7.39-7.46 AV: 6 F: FTMS  
 + p ESI d Full ms2  
 468.35@hcd35.00  
 [50.00-495.00]