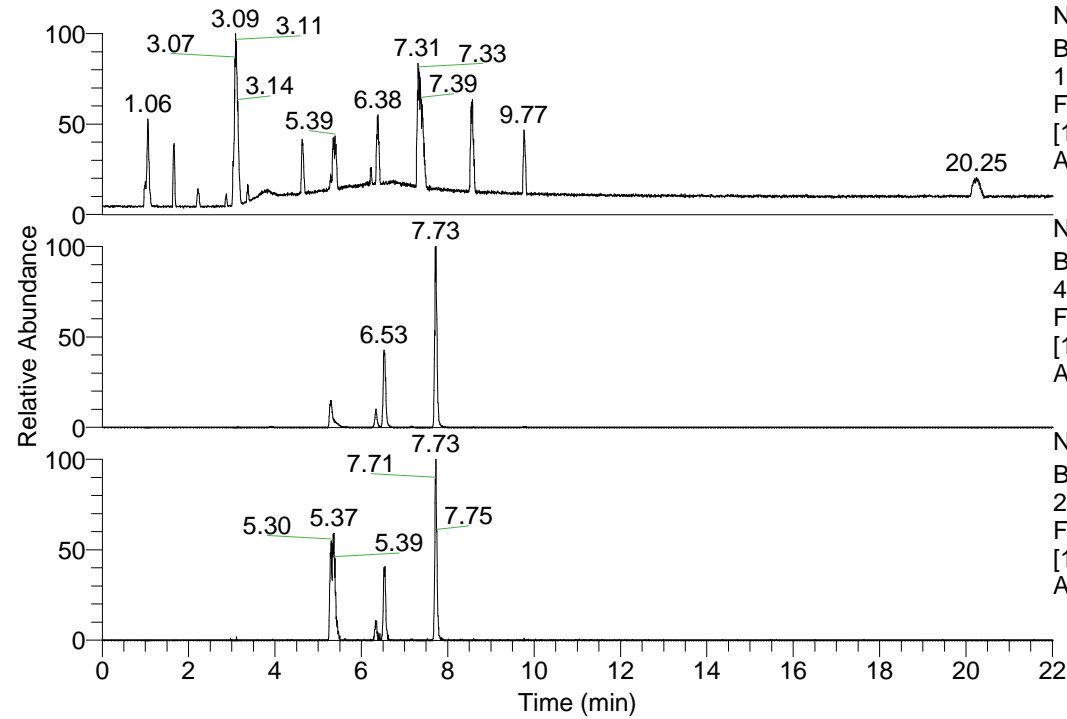


RT: 0.00 - 22.01



NL: 1.69E8
 Base Peak m/z=
 100.00000-1500.00000 F:
 FTMS + p ESI Full ms
 [100.00-1500.00] MS
 Apotteri_HDX

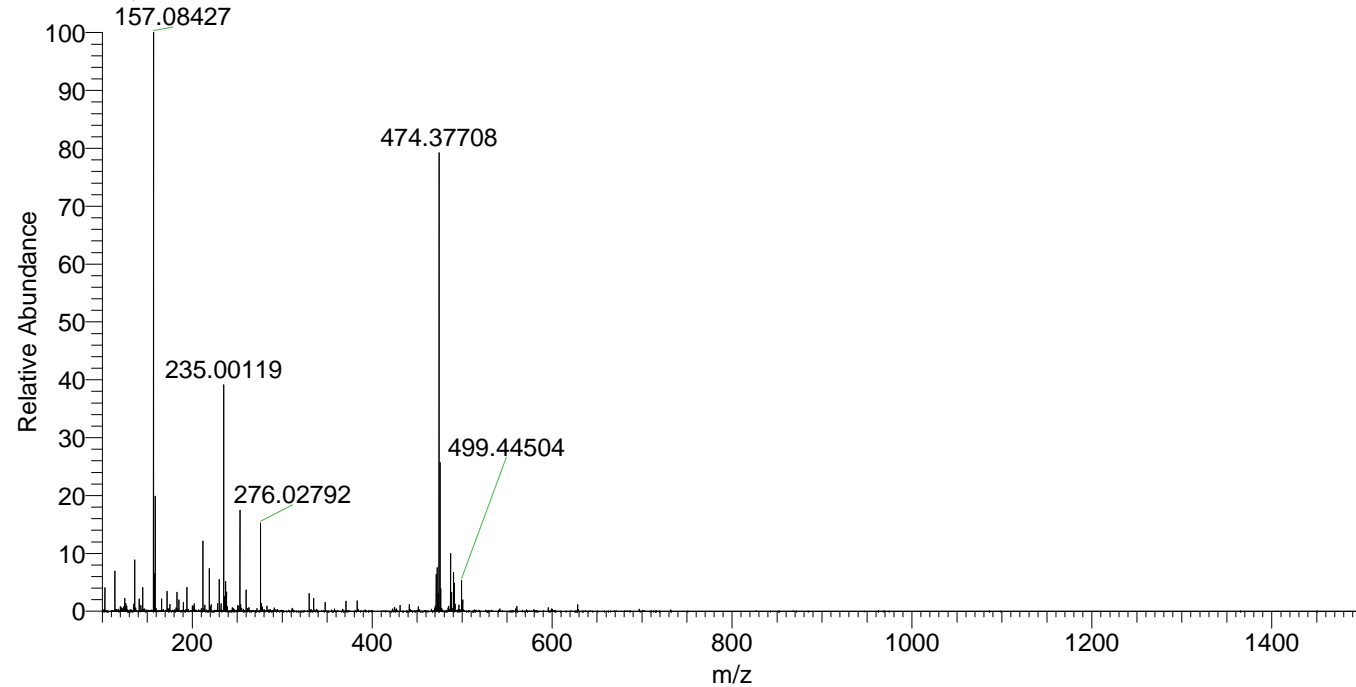
NL: 1.94E7
 Base Peak m/z=
 474.37305-474.37779 F:
 FTMS + p ESI Full ms
 [100.00-1500.00] MS
 Apotteri_HDX

NL: 8.10E5
 Base Peak m/z=
 238.19357-238.19595 F:
 FTMS + p ESI Full ms
 [100.00-1500.00] MS
 Apotteri_HDX

Apotteri_HDX#1248 RT: 7.73
 T: FTMS + p ESI Full ms [100.00-1500.00]
 m/z = 474.00000-475.00000

m/z	Intensity	Relative	Delta (ppm)	Composition
474.37708	19384016.0	100.00	1.38	C ₂₃ H ₃₄ ² H ₈ O ₄ N ₆
			-1.88	C ₂₃ H ₃₆ ² H ₇ O ₄ N ₆
			4.65	C ₂₃ H ₃₂ ² H ₉ O ₄ N ₆

Apotteri_HDX #1248 RT: 7.73 AV: 1 NL: 2.41E7
 T: FTMS + p ESI Full ms [100.00-1500.00]



Apotteri_HDX #1248 RT: 7.73 AV: 1 NL: 1.91E7
 T: FTMS + p ESI Full ms [100.00-1500.00]

