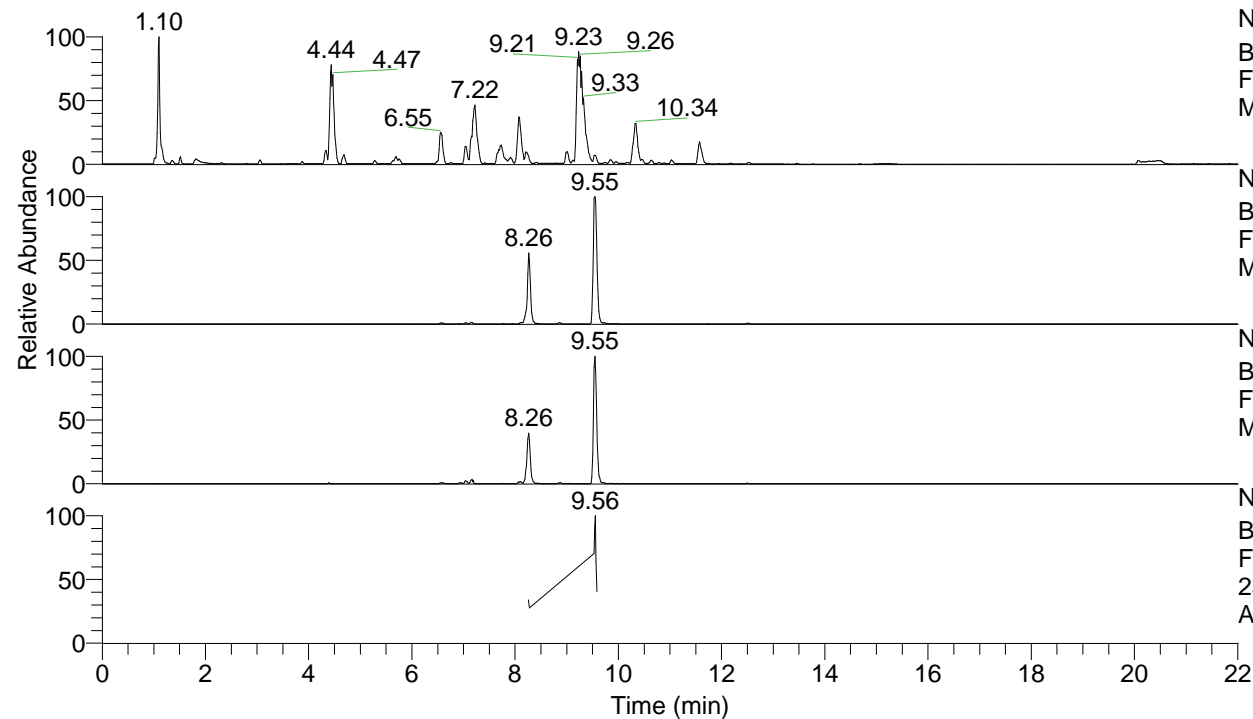


RT: 0.00 - 22.00



NL: 1.25E8
 Base Peak m/z= 100.00000-1500.00000 F:
 FTMS + p ESI Full ms [100.00-1500.00]
 MS Apotteri

NL: 9.05E6
 Base Peak m/z= 465.31660-465.32126 F:
 FTMS + p ESI Full ms [100.00-1500.00]
 MS Apotteri

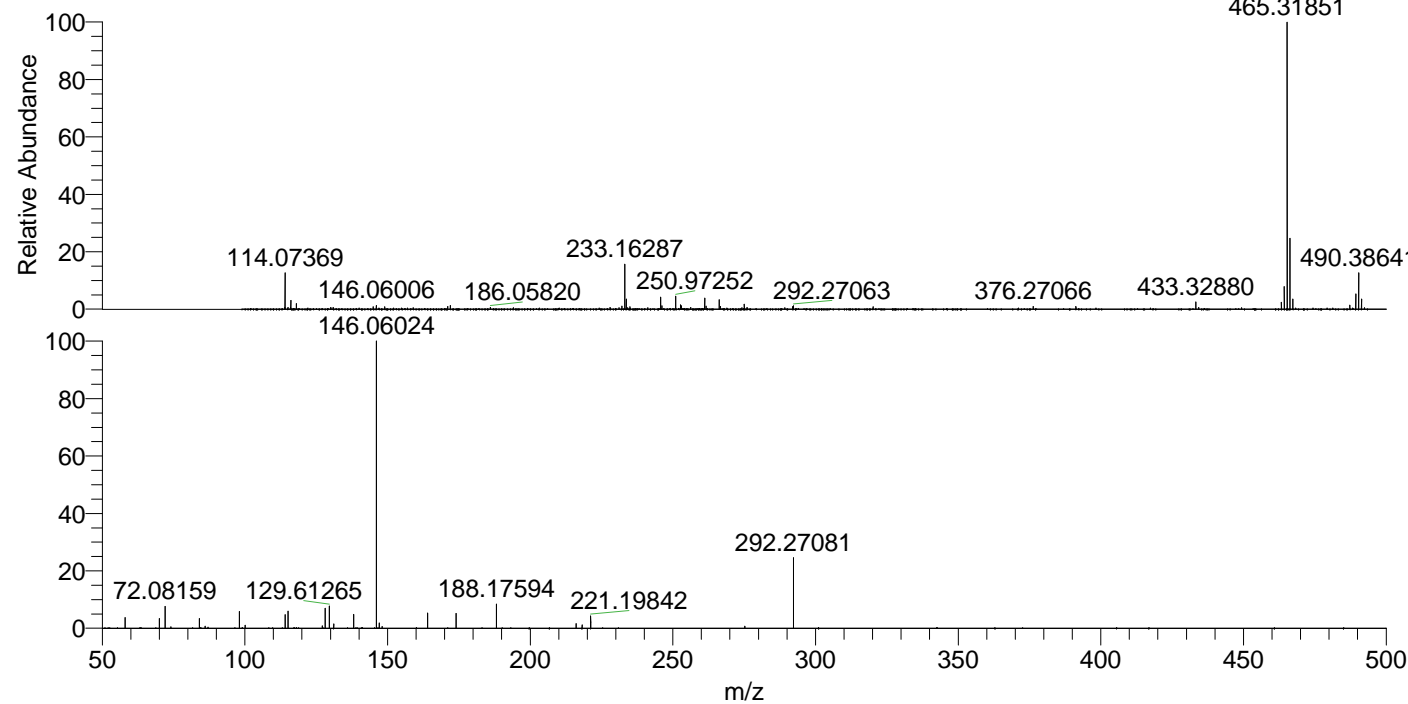
NL: 1.46E6
 Base Peak m/z= 233.16221-233.16455 F:
 FTMS + p ESI Full ms [100.00-1500.00]
 MS Apotteri

NL: 5.08E5
 Base Peak m/z= 50.00000-1500.00000 F:
 FTMS + p ESI d Full ms2
 233.16@hcd35.00 [50.00-495.00] MS
 Apotteri

Apotteri#3838-3849 RT: 9.54-9.57 AV: 3

F: FTMS + p ESI d Full ms2 233.16 ...
 m/z= 50.00000-1000.00000

m/z	Intensity	Relative
58.06604	14452.5	3.49
70.06600	14263.5	3.45
72.08159	32450.0	7.84
74.09731	2500.2	0.60
84.08155	14007.8	3.38
86.06070	2755.1	0.67
87.09258	2214.9	0.54
98.09701	24241.4	5.86
100.07639	5408.4	1.31
114.09166	20898.9	5.05
115.12333	23564.0	5.69
127.12329	3268.0	0.79
128.10742	28420.5	6.87
129.61272	30825.1	7.45
131.11828	6203.3	1.50
138.12585	20769.5	5.02
146.06021	413983.7	100.00
147.11331	7998.9	1.93
147.13681	2938.4	0.71
164.07072	21162.5	5.11
174.05541	21671.5	5.23
188.17593	33533.4	8.10
216.12171	6006.0	1.45
218.18673	6136.6	1.48
221.19846	16723.7	4.04
275.24441	3565.1	0.86
292.27094	103023.4	24.89



NL: 9.05E6
 Apotteri#3841 RT: 9.55
 AV: 1 T: FTMS + p ESI
 Full ms [100.00-1500.00]

NL: 3.91E5
 Apotteri#3833-3853 RT:
 9.53-9.57 AV: 4 F: FTMS
 + p ESI d Full ms2
 233.16@hcd35.00
 [50.00-495.00]