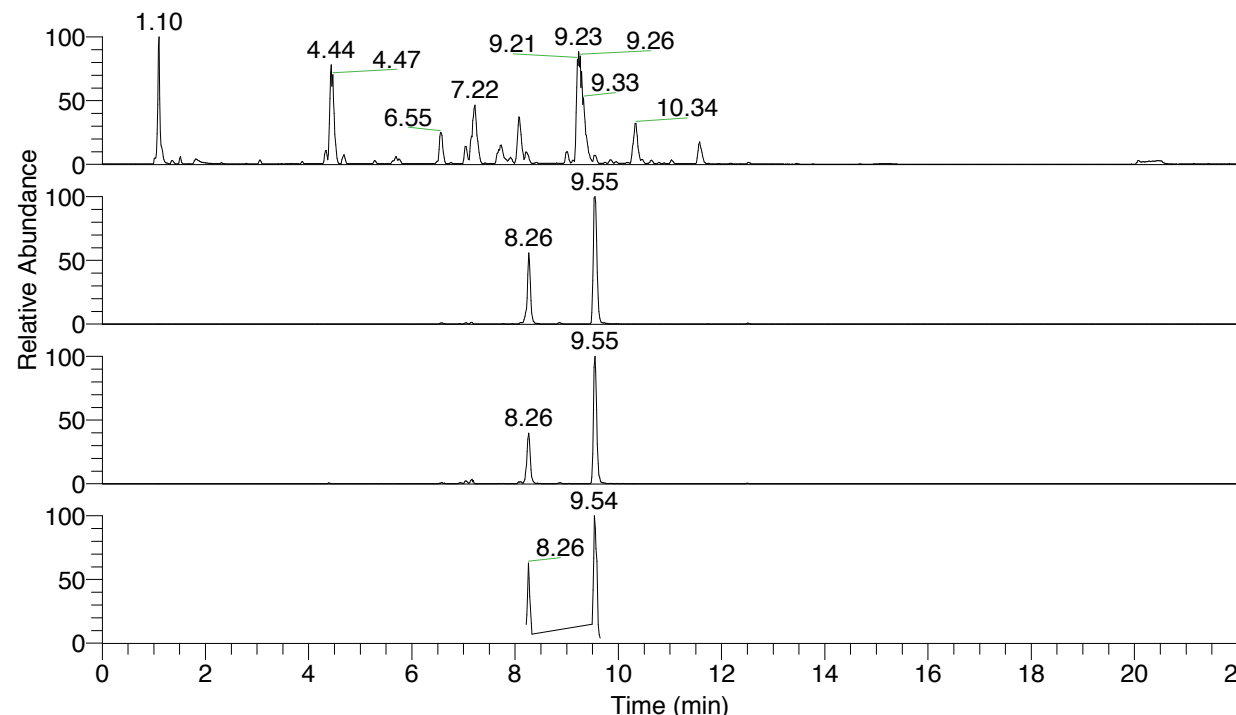


RT: 0.00 - 22.00



NL: 1.25E8
 Base Peak m/z= 100.00000-1500.00000 F:
 FTMS + p ESI Full ms [100.00-1500.00]
 MS Apotteri

NL: 9.05E6
 Base Peak m/z= 465.31660-465.32126 F:
 FTMS + p ESI Full ms [100.00-1500.00]
 MS Apotteri

NL: 1.46E6
 Base Peak m/z= 233.16221-233.16455 F:
 FTMS + p ESI Full ms [100.00-1500.00]
 MS Apotteri

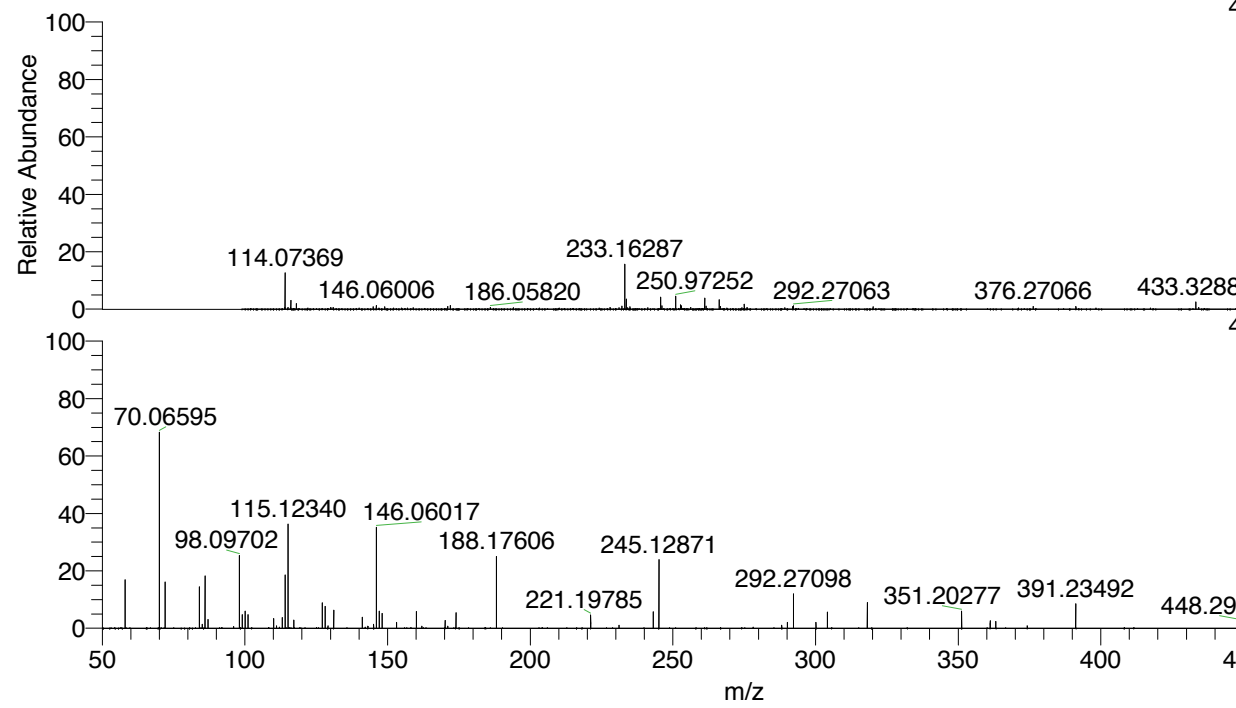
NL: 7.08E5
 Base Peak m/z= 50.00000-1500.00000 F:
 FTMS + p ESI d Full ms2
 465.32@hcd35.00 [50.00-495.00] MS
 Apotteri

Apotteri#3820-3860 RT: 9.49-9.60 AV: 8

F: FTMS + p ESI d Full ms2 465.32 ...

m/z= 50.00000-1000.00000

m/z	Intensity	Relative
58.06602	70159.1	16.55
70.06595	282578.2	66.66
72.08159	68313.1	16.11
84.08146	59931.9	14.14
85.07684	5626.9	1.33
86.06068	76568.0	18.06
87.09240	12783.0	3.02
96.08136	2808.3	0.66
98.09702	108065.3	25.49
99.09227	19535.8	4.61
100.07631	24796.8	5.85
101.10789	19472.5	4.59
110.09687	14211.7	3.35
111.09203	3422.4	0.81
113.10787	15706.1	3.70
114.09164	77390.9	18.26
115.12340	152279.7	35.92
117.10268	11862.8	2.80
127.12335	38168.8	9.00
128.10728	31778.0	7.50
129.10255	3272.8	0.77
131.11818	25906.8	6.11
141.13876	16084.1	3.79
143.11840	3094.6	0.73
145.13379	5762.3	1.36
146.06017	150312.6	35.46
147.11302	2428.0	0.57
147.13691	24733.2	5.83
148.14448	21549.3	5.08
153.13903	8421.2	1.99
160.14466	24065.8	5.68
162.05512	3013.8	0.71
170.16550	11472.5	2.71
171.14935	2804.2	0.66
174.05503	22404.7	5.29
188.17606	105584.1	24.91
221.19785	19253.3	4.54
231.11310	4493.2	1.06
243.11339	23729.4	5.60
245.12871	99275.1	23.42
288.17072	4712.8	1.11
290.15011	8537.1	2.01
292.27098	49858.8	11.76
300.17087	8779.1	2.07
304.16610	23333.8	5.50
318.18161	38100.2	8.99
351.20277	24791.9	5.85
361.22259	11126.8	2.62
363.20281	9810.1	2.31
374.23007	3503.5	0.83
391.23492	35377.2	8.35
448.29401	10353.7	2.44
465.31885	423924.0	100.00



NL: 9.05E6
 Apotteri#3841 RT: 9.55
 AV: 1 T: FTMS + p ESI
 Full ms [100.00-1500.00]

NL: 4.13E5
 Apotteri#3818-3863 RT:
 9.49-9.60 AV: 8 F: FTMS
 + p ESI d Full ms2
 465.32@hcd35.00
 [50.00-495.00]

Apotteri#3820-3860 RT: 9.49-9.60 AV: 8

F: FTMS + p ESI d Full ms2 465.32@hcd35.00 [50.00-495.00]

m/z= 50.00000-1000.00000

m/z	Intensity	Relative
58.06602	70159.1	16.55
70.06595	282578.2	66.66
72.08159	68313.1	16.11
84.08146	59931.9	14.14
85.07684	5626.9	1.33
86.06068	76568.0	18.06
87.09240	12783.0	3.02
96.08136	2808.3	0.66
98.09702	108065.3	25.49
99.09227	19535.8	4.61
100.07631	24796.8	5.85
101.10789	19472.5	4.59
110.09687	14211.7	3.35
111.09203	3422.4	0.81
113.10787	15706.1	3.70
114.09164	77390.9	18.26
115.12340	152279.7	35.92
117.10268	11862.8	2.80
127.12335	38168.8	9.00
128.10728	31778.0	7.50
129.10255	3272.8	0.77
131.11818	25906.8	6.11
141.13876	16084.1	3.79
143.11840	3094.6	0.73
145.13379	5762.3	1.36
146.06017	150312.6	35.46
147.11302	2428.0	0.57
147.13691	24733.2	5.83
148.14448	21549.3	5.08
153.13903	8421.2	1.99
160.14466	24065.8	5.68
162.05512	3013.8	0.71
170.16550	11472.5	2.71
171.14935	2804.2	0.66
174.05503	22404.7	5.29
188.17606	105584.1	24.91
221.19785	19253.3	4.54
231.11310	4493.2	1.06
243.11339	23729.4	5.60

Apotteri#3820-3860 RT: 9.49-9.60 AV: 8

F: FTMS + p ESI d Full ms2 465.32@hcd35.00 [50.00-495.00]

m/z= 50.00000-1000.00000

m/z	Intensity	Relative
245.12871	99275.1	23.42
288.17072	4712.8	1.11
290.15011	8537.1	2.01
292.27098	49858.8	11.76
300.17087	8779.1	2.07
304.16610	23333.8	5.50
318.18161	38100.2	8.99
351.20277	24791.9	5.85
361.22259	11126.8	2.62
363.20281	9810.1	2.31
374.23007	3503.5	0.83
391.23492	35377.2	8.35
448.29401	10353.7	2.44
465.31885	423924.0	100.00