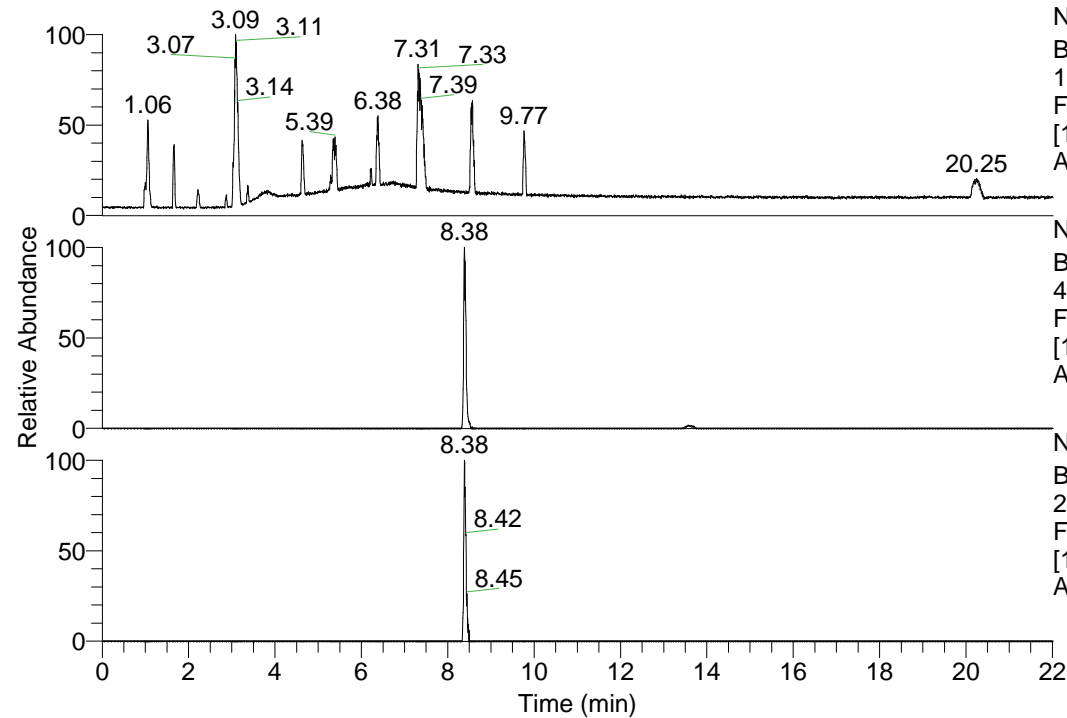


RT: 0.00 - 22.01



NL: 1.69E8
 Base Peak m/z=
 100.00000-1500.00000 F:
 FTMS + p ESI Full ms
 [100.00-1500.00] MS
 Apotteri_HDX

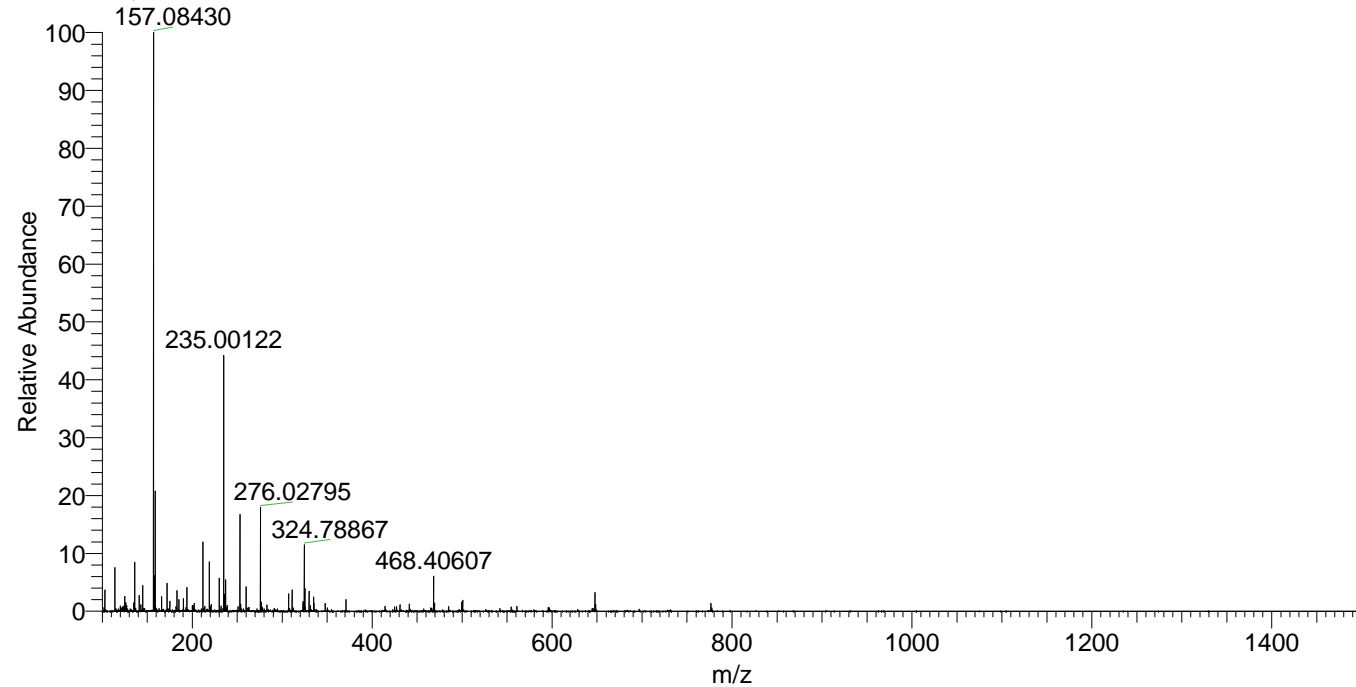
Apotteri_HDX#1355 RT: 8.38
 T: FTMS + p ESI Full ms [100.00-1500.00]
 m/z= 468.00000-469.00000

m/z	Intensity	Relative	Delta (ppm)	Composition
468.40607	1354323.6	100.00	1.56	C ₂₅ H ₄₀ ² H ₆ O ₂ N ₆
			-1.75	C ₂₅ H ₄₂ ² H ₅ O ₂ N ₆
			4.86	C ₂₅ H ₃₈ ² H ₇ O ₂ N ₆

NL: 1.45E6
 Base Peak m/z=
 468.40200-468.40668 F:
 FTMS + p ESI Full ms
 [100.00-1500.00] MS
 Apotteri_HDX

NL: 1.35E5
 Base Peak m/z=
 235.20804-235.21040 F:
 FTMS + p ESI Full ms
 [100.00-1500.00] MS
 Apotteri_HDX

Apotteri_HDX #1355 RT: 8.38 AV: 1 NL: 2.20E7
 T: FTMS + p ESI Full ms [100.00-1500.00]



Apotteri_HDX #1355 RT: 8.38 AV: 1 NL: 1.34E6
 T: FTMS + p ESI Full ms [100.00-1500.00]

