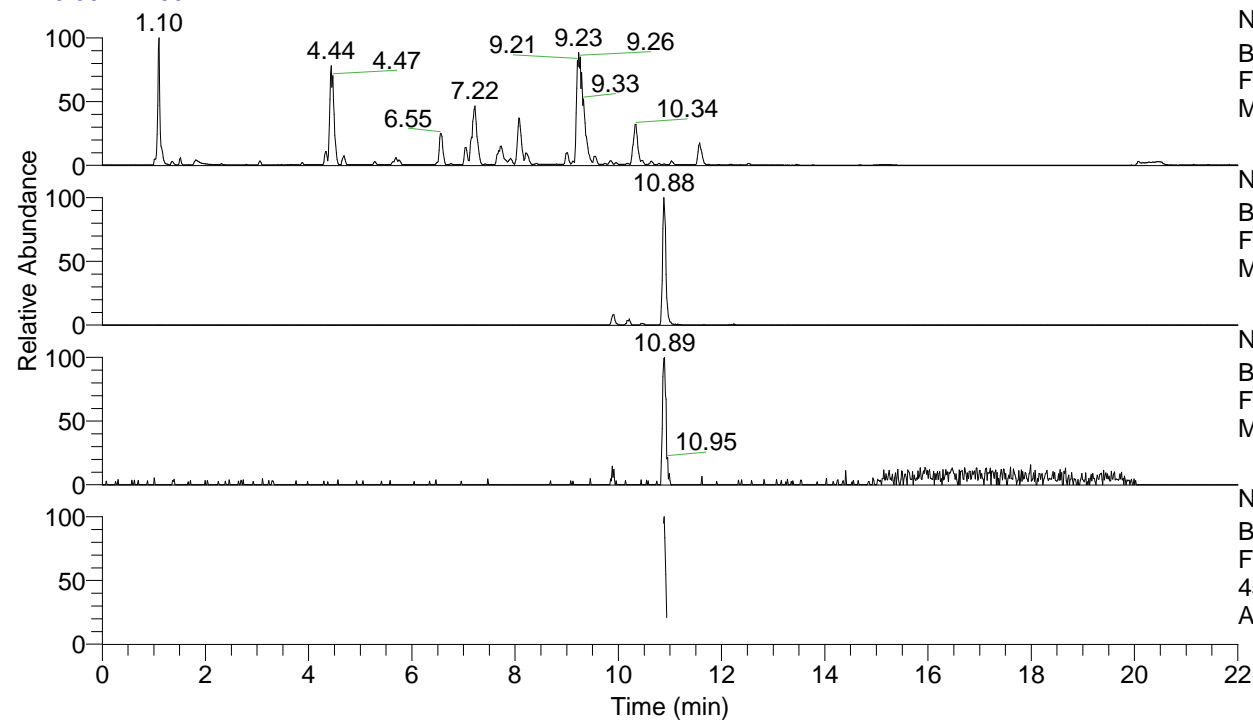


RT: 0.00 - 22.00



NL: 1.25E8
 Base Peak m/z= 100.00000-1500.00000 F:
 FTMS + p ESI Full ms [100.00-1500.00]
 MS Apotteri

NL: 5.26E5
 Base Peak m/z= 459.34245-459.34705 F:
 FTMS + p ESI Full ms [100.00-1500.00]
 MS Apotteri

NL: 4.08E4
 Base Peak m/z= 230.17514-230.17744 F:
 FTMS + p ESI Full ms [100.00-1500.00]
 MS Apotteri

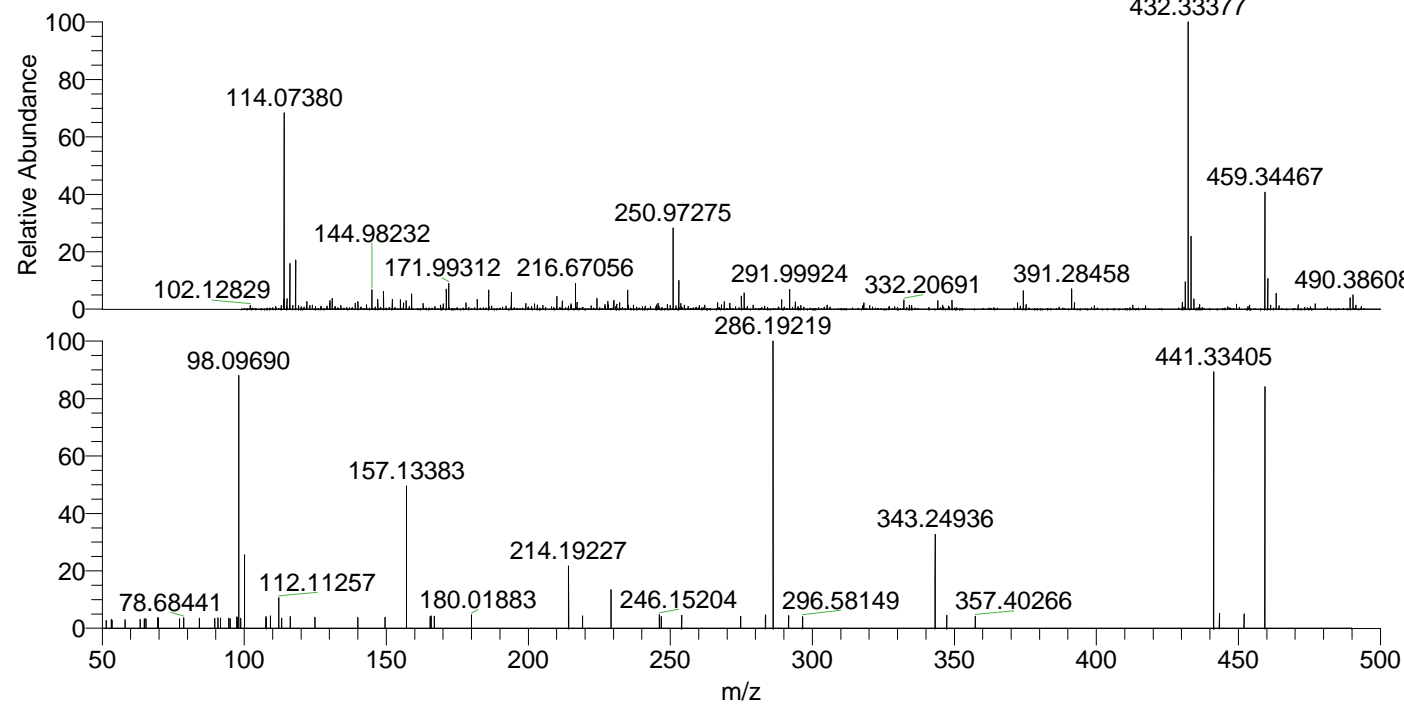
NL: 3.59E4
 Base Peak m/z= 50.00000-1500.00000 F:
 FTMS + p ESI d Full ms2
 459.34@hcd35.00 [50.00-485.00] MS
 Apotteri

Apotteri#4372-4390 RT: 10.87-10.92

F: FTMS + p ESI d Full ms2 459.34 ...

m/z= 50.00000-1000.00000

m/z	Intensity	Relative
51.40893	702.2	2.76
53.25966	784.0	3.09
53.44607	722.5	2.84
58.03400	766.3	3.02
63.33187	774.1	3.05
64.83351	857.2	3.38
65.36398	840.7	3.31
69.56474	915.4	3.60
69.80293	904.9	3.56
77.18005	853.1	3.36
78.68441	944.4	3.72
84.25380	899.0	3.54
89.66140	871.2	3.43
90.71058	944.3	3.72
91.59153	915.5	3.60
94.60312	888.9	3.50
94.97712	851.9	3.35
97.43489	1010.5	3.98
97.60934	917.9	3.61
98.09690	22421.9	88.28
98.73963	901.1	3.55
100.07651	6469.1	25.47
107.65699	1018.2	4.01
107.80901	912.4	3.59
109.21473	1085.9	4.28
112.11257	2784.4	10.96
113.20911	904.7	3.56
116.17618	1038.7	4.09
124.90216	973.3	3.83
139.99692	936.2	3.69
149.58214	992.8	3.91
157.13383	12994.4	51.16
165.43890	1034.6	4.07
165.79272	1099.4	4.33
166.88792	1070.5	4.21
180.01883	1162.4	4.58
214.19227	5489.6	21.61
219.09826	1083.1	4.26
229.13360	3407.3	13.42
246.15204	1193.4	4.70
246.85032	1038.4	4.09
254.00248	1161.9	4.58
274.76047	1053.2	4.15
283.51284	1180.1	4.65
286.19219	25397.1	100.00
291.65281	1113.8	4.39
296.58149	1023.1	4.03
343.24936	8268.3	32.56
347.32238	1153.1	4.54
357.40266	1064.7	4.19
441.33405	23393.2	92.11
443.32717	1342.4	5.29
452.04271	1281.7	5.05
459.34535	21541.3	84.82



NL: 1.29E6
 Apotteri#4375 RT: 10.88
 AV: 1 T: FTMS + p ESI
 Full ms [100.00-1500.00]

NL: 2.53E4
 Apotteri#4369-4393 RT:
 10.87-10.92 AV: 4 F:
 FTMS + p ESI d Full ms2
 459.34@hcd35.00
 [50.00-485.00]