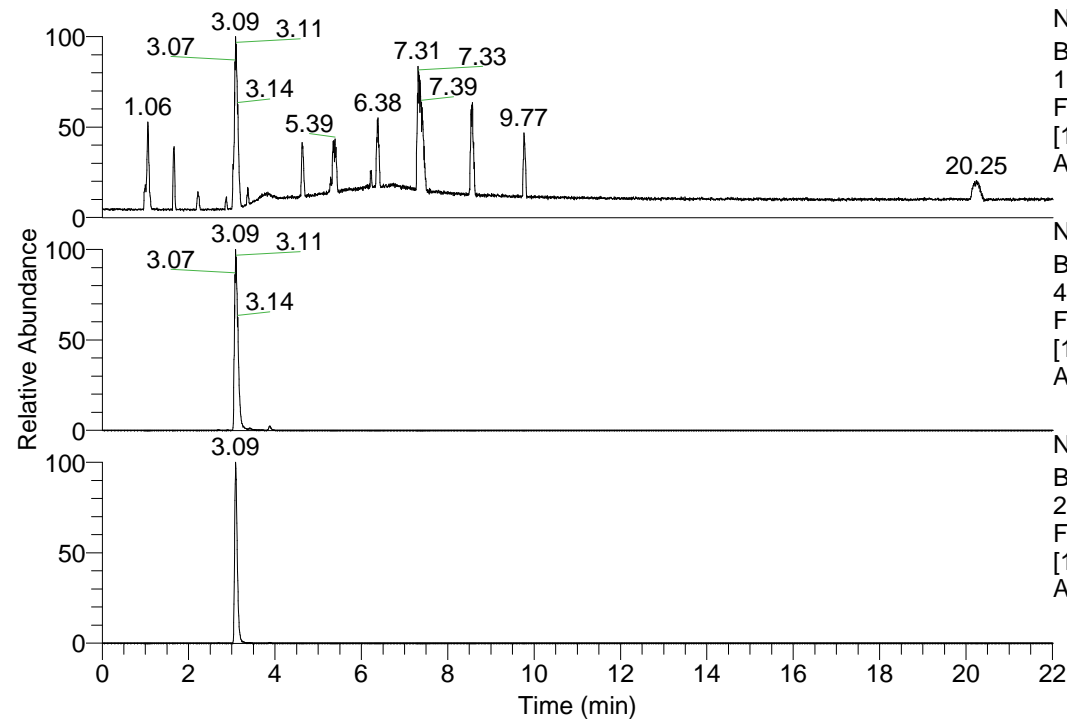


RT: 0.00 - 22.01



NL: 1.69E8
 Base Peak m/z=
 100.00000-1500.00000 F:
 FTMS + p ESI Full ms
 [100.00-1500.00] MS
 Apotteri_HDX

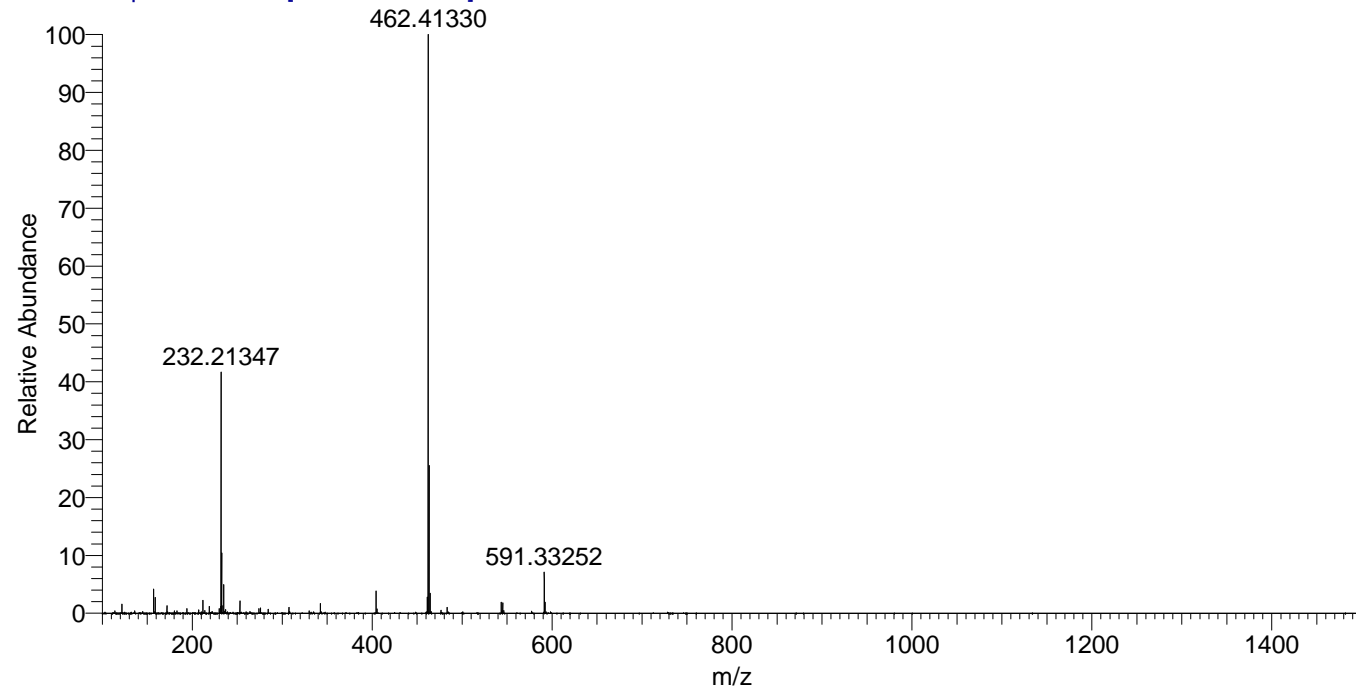
Apotteri_HDX#474 RT: 3.09
 T: FTMS + p ESI Full ms [100.00-1500.00]
 m/z= 462.00000-463.00000

m/z	Intensity	Relative	Delta (ppm)	Composition
462.41330	168641408.0	100.00	1.07	C ₂₃ H ₃₈ ² H ₈ O ₃ N ₆
			-2.28	C ₂₃ H ₄₀ ² H ₇ O ₃ N ₆
			4.42	C ₂₃ H ₃₆ ² H ₉ O ₃ N ₆

NL: 1.69E8
 Base Peak m/z=
 462.40950-462.41412 F:
 FTMS + p ESI Full ms
 [100.00-1500.00] MS
 Apotteri_HDX

NL: 7.13E7
 Base Peak m/z=
 232.21179-232.21411 F:
 FTMS + p ESI Full ms
 [100.00-1500.00] MS
 Apotteri_HDX

Apotteri_HDX #474 RT: 3.09 AV: 1 NL: 1.68E8
 T: FTMS + p ESI Full ms [100.00-1500.00]



Apotteri_HDX #474 RT: 3.09 AV: 1 NL: 1.68E8
 T: FTMS + p ESI Full ms [100.00-1500.00]

