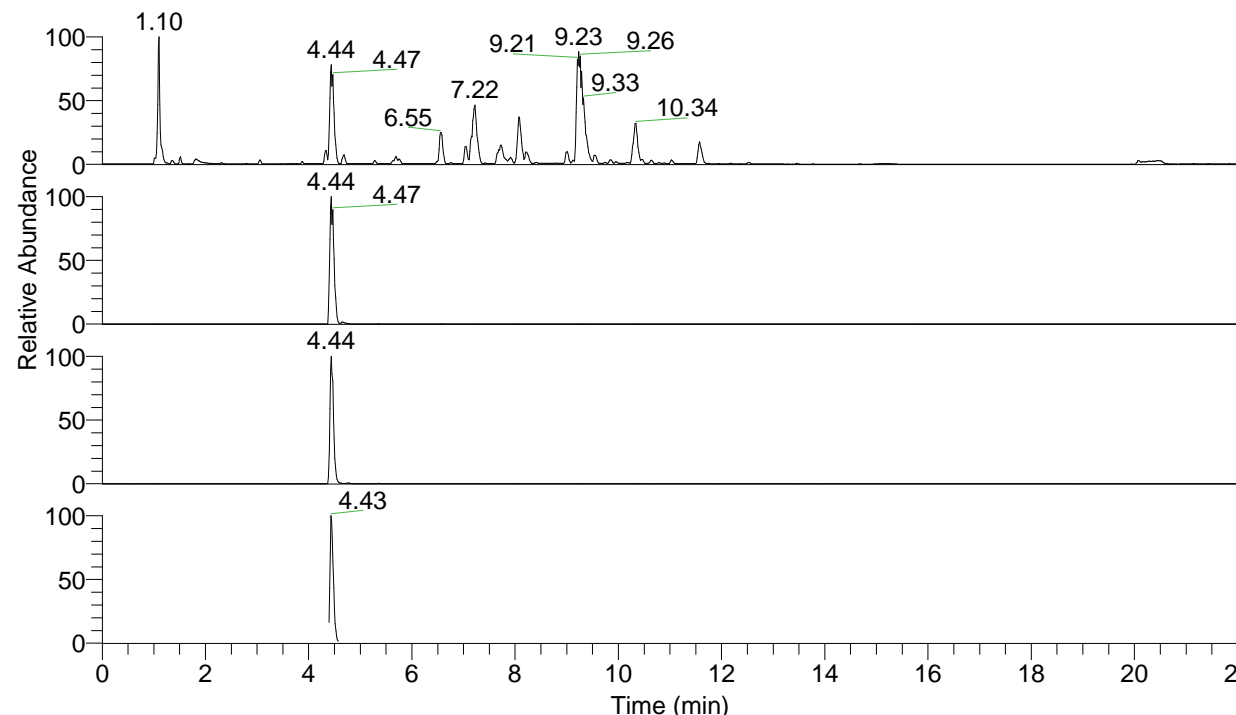


RT: 0.00 - 22.00



NL: 1.25E8
 Base Peak m/z= 100.00000-1500.00000 F:
 FTMS + p ESI Full ms [100.00-1500.00]
 MS Apotteri

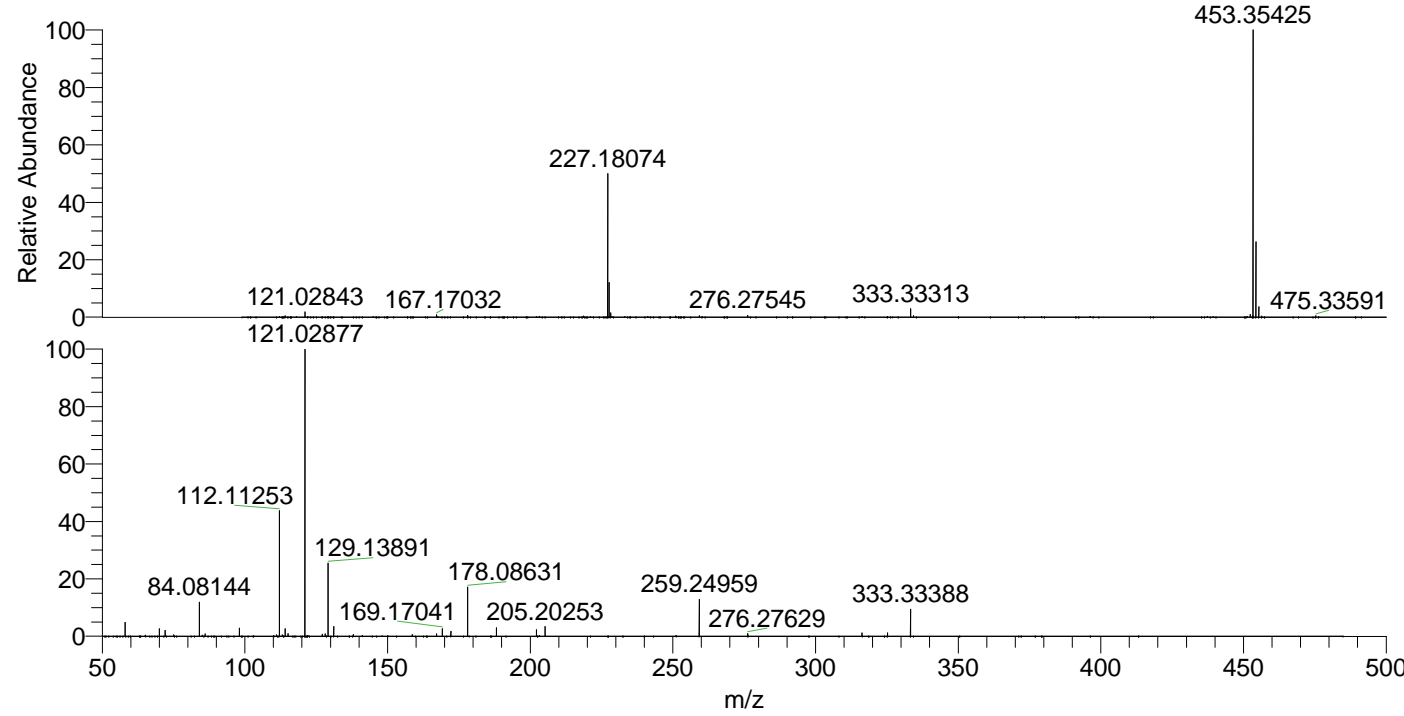
NL: 9.79E7
 Base Peak m/z= 453.35304-453.35758 F:
 FTMS + p ESI Full ms [100.00-1500.00]
 MS Apotteri

NL: 4.79E7
 Base Peak m/z= 227.18043-227.18271 F:
 FTMS + p ESI Full ms [100.00-1500.00]
 MS Apotteri

NL: 1.30E7
 Base Peak m/z= 50.00000-1500.00000 F:
 FTMS + p ESI d Full ms2
 227.18@hcd35.00 [50.00-480.00] MS
 Apotteri

Apotteri#1763-1803 RT: 4.39-4.48 AV: 8
 F: FTMS + p ESI d Full ms2 227.18@h ...
 m/z= 50.00000-1000.00000

m/z	Intensity	Relative
58.06601	372651.7	4.78
70.06593	200666.9	2.57
72.08158	154100.1	1.98
84.08144	916165.6	11.74
86.06072	64649.5	0.83
98.09694	216433.1	2.77
112.11253	3320828.0	42.57
113.10777	40547.1	0.52
114.09165	206609.2	2.65
115.12339	75064.8	0.96
121.02877	7801282.0	100.00
127.12326	56643.7	0.73
128.10714	61447.1	0.79
129.13891	1959024.8	25.11
131.11801	262995.8	3.37
138.05502	45960.6	0.59
158.65753	50716.5	0.65
167.17056	62802.6	0.81
169.17041	203647.5	2.61
172.18079	128672.0	1.65
178.08631	1313870.0	16.84
188.17596	223251.1	2.86
202.19150	176972.8	2.27
205.20253	259500.0	3.33
259.24959	981738.5	12.58
276.27629	69826.5	0.90
316.30690	87197.6	1.12
325.22326	91172.4	1.17
333.33388	741069.1	9.50



NL: 9.40E7
 Apotteri#1783 RT: 4.44
 AV: 1 T: FTMS + p ESI
 Full ms [100.00-1500.00]

NL: 7.59E6
 Apotteri#1763-1804 RT:
 4.39-4.48 AV: 8 F: FTMS
 + p ESI d Full ms2
 227.18@hcd35.00
 [50.00-480.00]