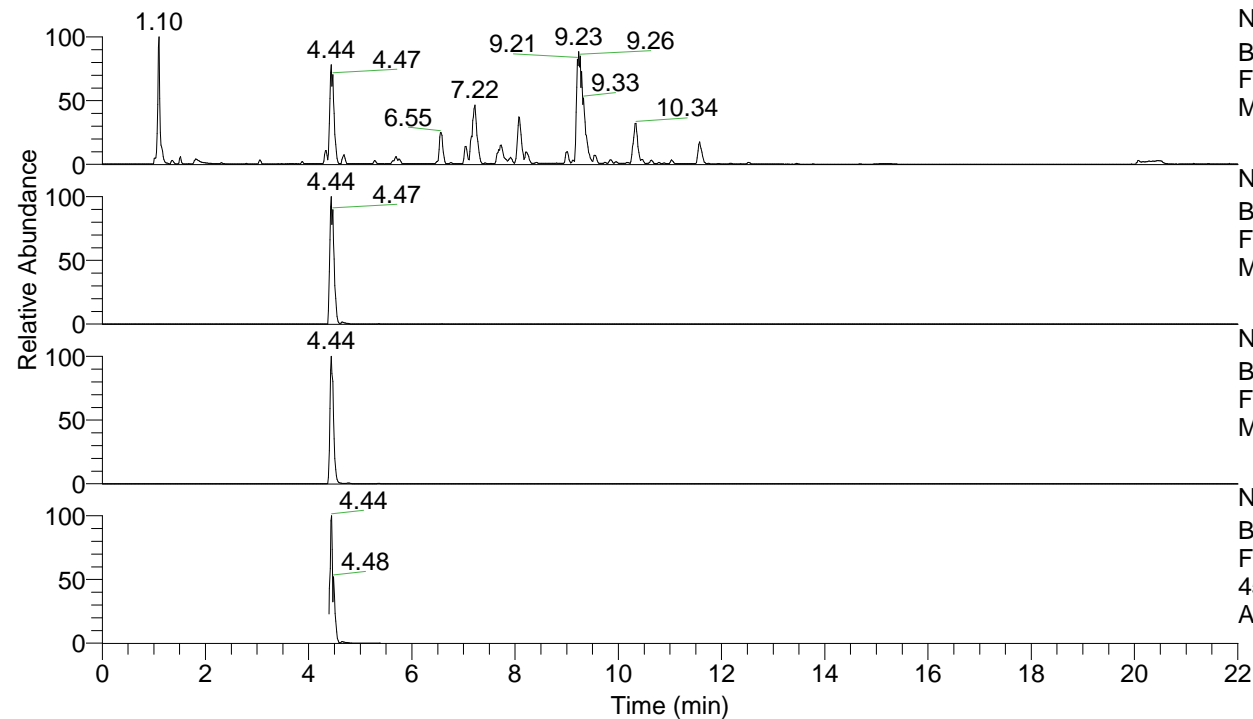


RT: 0.00 - 22.00



NL: 1.25E8
 Base Peak m/z= 100.00000-1500.00000 F:
 FTMS + p ESI Full ms [100.00-1500.00]
 MS Apotteri

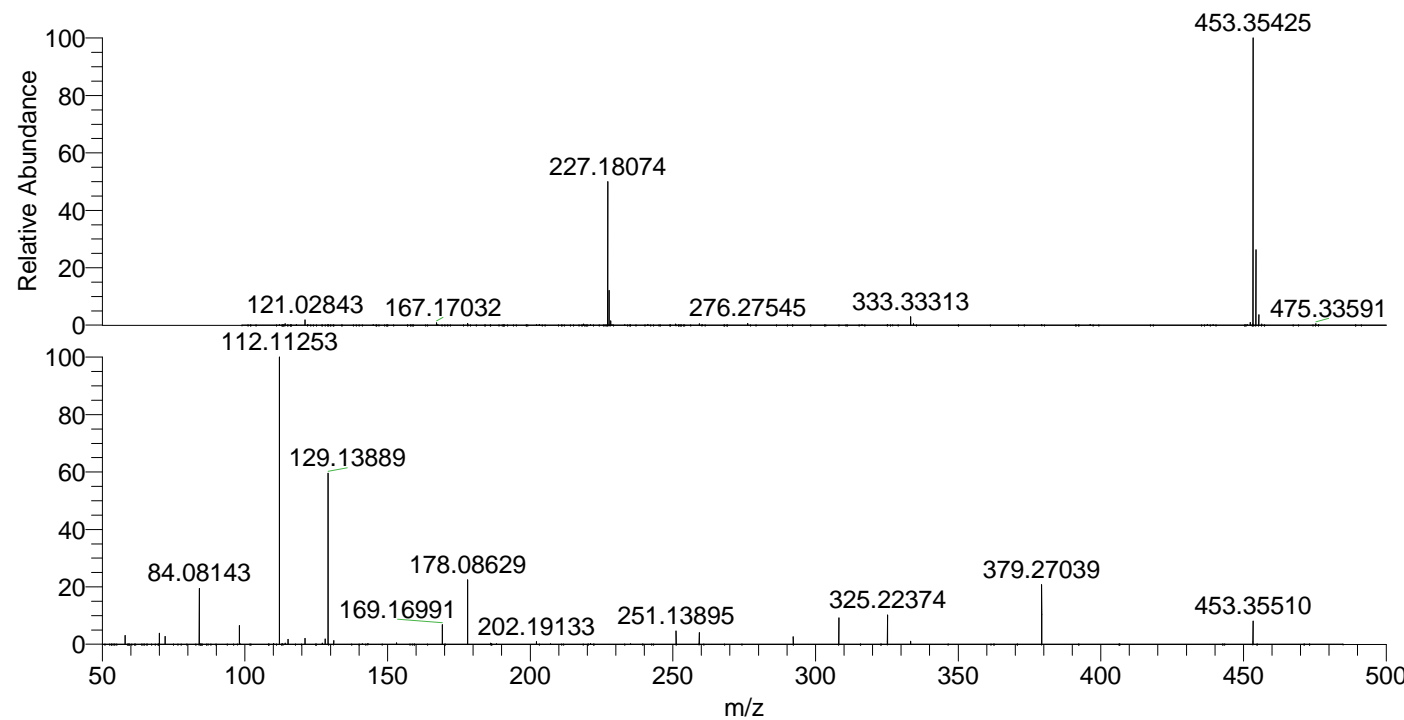
NL: 9.79E7
 Base Peak m/z= 453.35304-453.35758 F:
 FTMS + p ESI Full ms [100.00-1500.00]
 MS Apotteri

NL: 4.79E7
 Base Peak m/z= 227.18043-227.18271 F:
 FTMS + p ESI Full ms [100.00-1500.00]
 MS Apotteri

NL: 2.05E7
 Base Peak m/z= 50.00000-1500.00000 F:
 FTMS + p ESI d Full ms2
 453.35@hcd35.00 [50.00-480.00] MS
 Apotteri

Apotteri#1762-1814 RT: 4.39-4.51 AV: 10
 F: FTMS + p ESI d Full ms2 453.35@hc ...
 m/z= 50.00000-1000.00000

m/z	Intensity	Relative
58.06597	322995.7	3.11
70.06589	405370.7	3.91
72.08158	285666.5	2.75
84.08143	2045322.0	19.71
98.09706	695269.6	6.70
112.11253	10379631.0	100.00
115.12333	175745.4	1.69
121.02872	219482.8	2.11
128.10726	187531.7	1.81
129.13889	6323381.5	60.92
131.11800	134739.5	1.30
169.16993	719436.1	6.93
178.08628	2351290.3	22.65
202.19133	98601.2	0.95
251.13898	485981.7	4.68
259.24942	426299.2	4.11
292.20150	284922.4	2.75
308.19730	973496.4	9.38
325.22366	1087469.1	10.48
333.33350	116366.1	1.12
379.27037	2164041.8	20.85
453.35514	859175.6	8.28



NL: 9.40E7
 Apotteri#1783 RT: 4.44
 AV: 1 T: FTMS + p ESI
 Full ms [100.00-1500.00]

NL: 1.19E7
 Apotteri#1766-1808 RT:
 4.40-4.50 AV: 8 F: FTMS
 + p ESI d Full ms2
 453.35@hcd35.00
 [50.00-480.00]