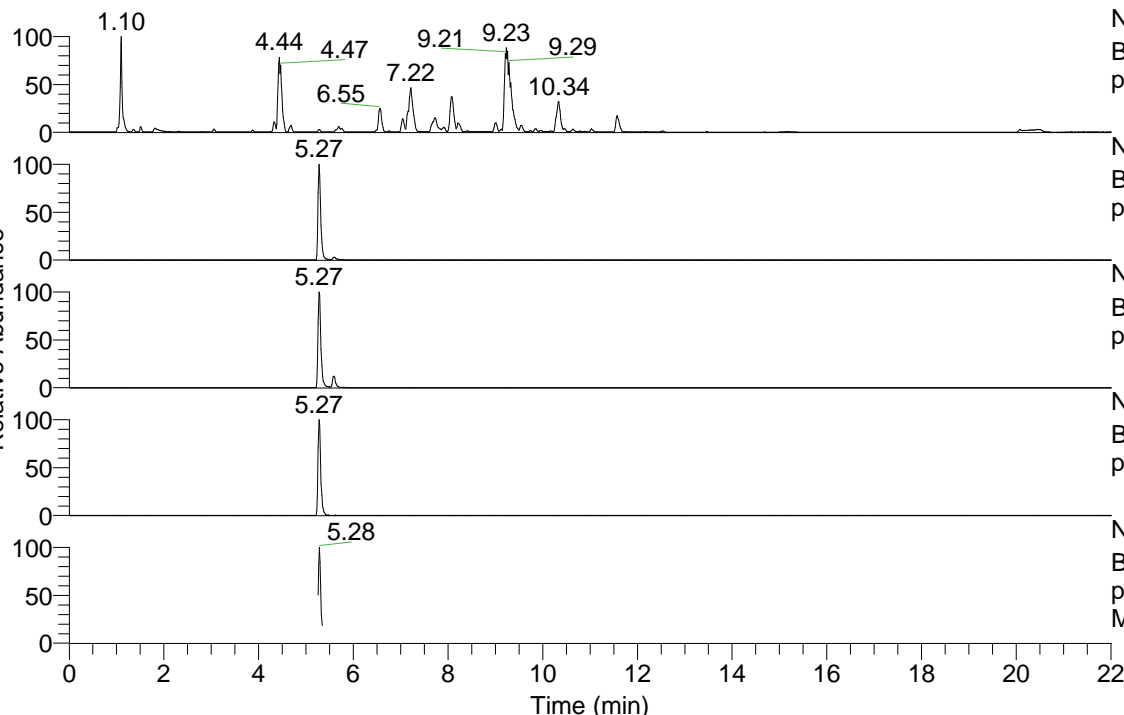


RT: 0.00 - 22.00



NL: 1.25E8
 Base Peak m/z= 100.00000-1500.00000 F: FTMS +
 p ESI Full ms [100.00-1500.00] MS Apotteri

NL: 3.94E6
 Base Peak m/z= 452.35781-452.36233 F: FTMS +
 p ESI Full ms [100.00-1500.00] MS Apotteri

NL: 1.68E6
 Base Peak m/z= 226.68282-226.68508 F: FTMS +
 p ESI Full ms [100.00-1500.00] MS Apotteri

NL: 1.96E5
 Base Peak m/z= 566.35010-566.35576 F: FTMS +
 p ESI Full ms [100.00-1500.00] MS Apotteri

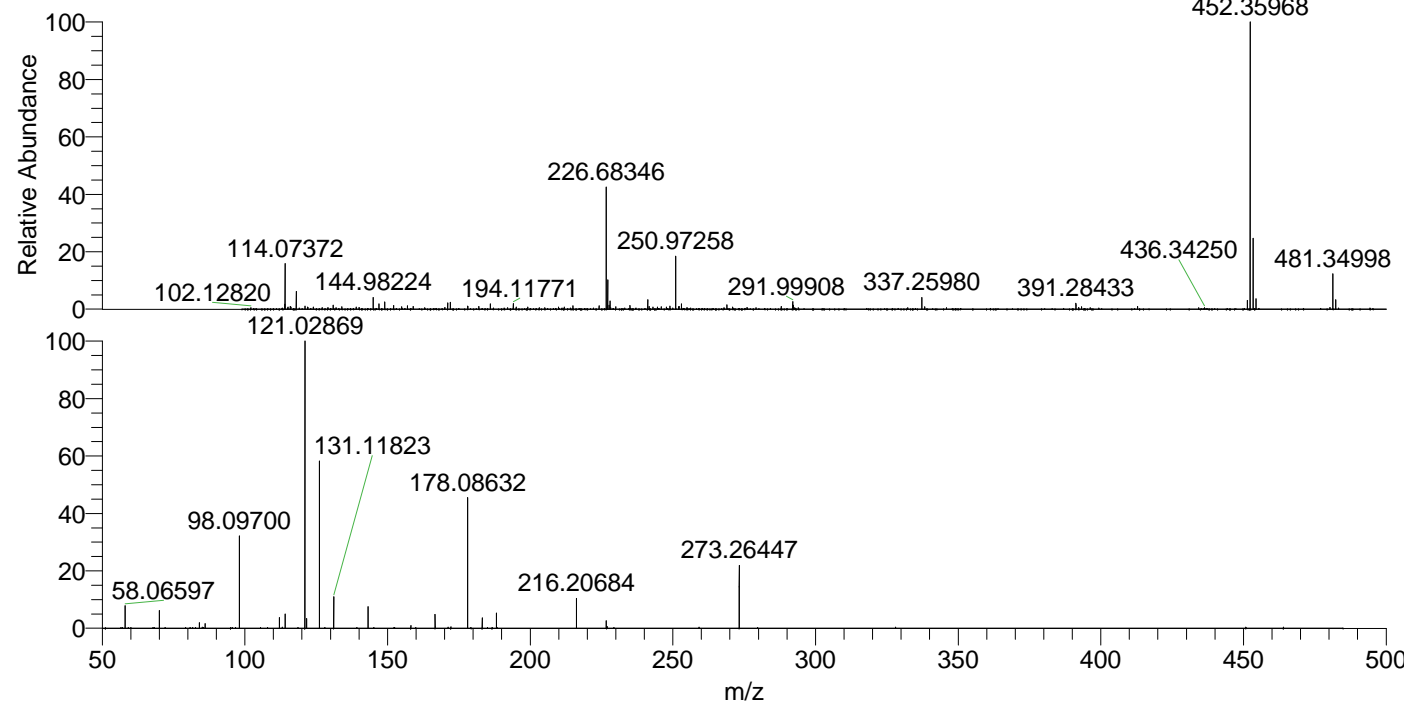
NL: 3.24E5
 Base Peak m/z= 50.00000-1500.00000 F: FTMS +
 p ESI d Full ms2 226.68@hcd35.00 [50.00-480.00]
 MS Apotteri

Apotteri#2111-2127 RT: 5.25-5.30 AV: 4

F: FTMS + p ESI d Full ms2 226.68 ...

m/z = 50.00000-1000.00000

| m/z | Intensity | Relative |
|-----------|-----------|----------|
| 58.06597 | 18589.3 | 7.73 |
| 70.06589 | 14569.1 | 6.06 |
| 84.08149 | 4584.8 | 1.91 |
| 86.06072 | 3810.9 | 1.58 |
| 86.09716 | 3181.7 | 1.32 |
| 98.09700 | 77599.8 | 32.26 |
| 112.11228 | 8942.6 | 3.72 |
| 114.09181 | 12060.6 | 5.01 |
| 121.02869 | 240572.8 | 100.00 |
| 121.63354 | 8257.9 | 3.43 |
| 126.12794 | 137908.6 | 57.33 |
| 131.11823 | 25948.2 | 10.79 |
| 143.15439 | 17798.1 | 7.40 |
| 158.15993 | 2374.2 | 0.99 |
| 166.67337 | 11606.3 | 4.82 |
| 178.08632 | 107447.2 | 44.66 |
| 183.18584 | 8891.8 | 3.70 |
| 188.17623 | 12467.0 | 5.18 |
| 216.20684 | 24537.7 | 10.20 |
| 226.68288 | 6244.2 | 2.60 |
| 226.95569 | 1429.0 | 0.59 |
| 273.26447 | 53240.9 | 22.13 |



NL: 3.89E6
 Apotteri#2119 RT: 5.27
 AV: 1 T: FTMS + p ESI
 Full ms [100.00-1500.00]

NL: 2.36E5
 Apotteri#2108-2132 RT:
 5.25-5.30 AV: 4 F: FTMS
 + p ESI d Full ms2
 226.68@hcd35.00
 [50.00-480.00]