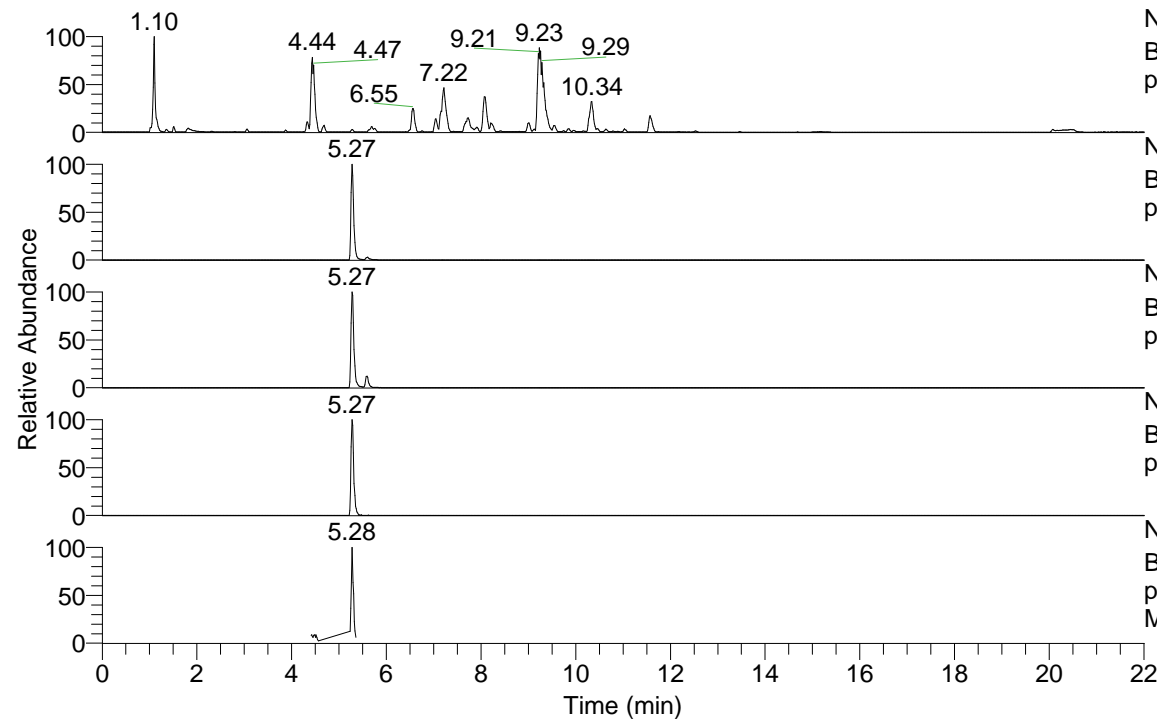


RT: 0.00 - 22.00



NL: 1.25E8  
 Base Peak m/z= 100.00000-1500.00000 F: FTMS +  
 p ESI Full ms [100.00-1500.00] MS Apotteri

NL: 3.94E6  
 Base Peak m/z= 452.35781-452.36233 F: FTMS +  
 p ESI Full ms [100.00-1500.00] MS Apotteri

NL: 1.68E6  
 Base Peak m/z= 226.68282-226.68508 F: FTMS +  
 p ESI Full ms [100.00-1500.00] MS Apotteri

NL: 1.96E5  
 Base Peak m/z= 566.35010-566.35576 F: FTMS +  
 p ESI Full ms [100.00-1500.00] MS Apotteri

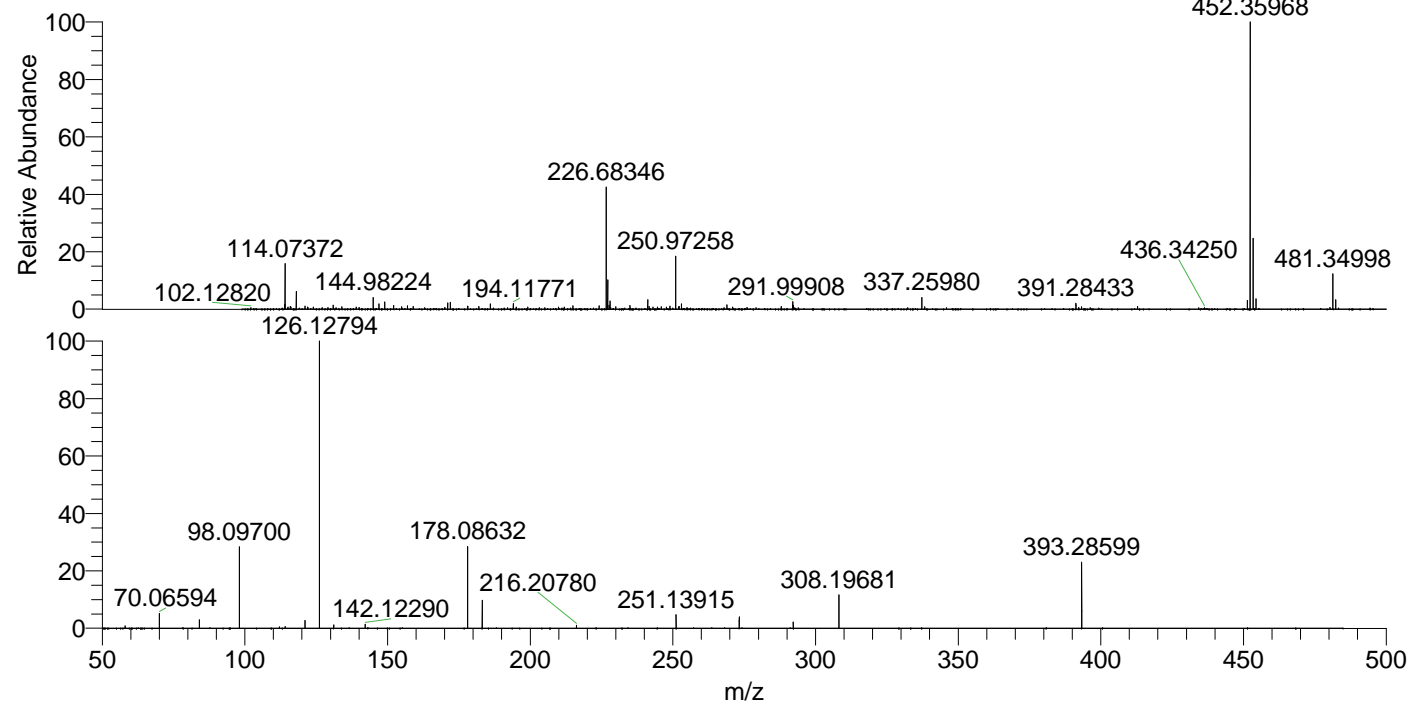
NL: 1.23E6  
 Base Peak m/z= 50.00000-1500.00000 F: FTMS +  
 p ESI d Full ms2 452.35@hcd35.00 [50.00-480.00]  
 MS Apotteri

Apotteri#2110-2138 RT: 5.25-5.32 AV: 6

F: FTMS + p ESI d Full ms2 452.35 ...

m/z= 50.00000-1000.00000

m/z	Intensity	Relative
58.06602	5413.5	0.81
70.06594	34505.0	5.19
84.08159	19736.3	2.97
98.09700	191070.6	28.76
112.11259	3382.6	0.51
114.09168	4224.8	0.64
121.02905	18159.6	2.73
126.12794	664380.1	100.00
131.11812	8079.5	1.22
142.12290	8989.7	1.35
178.08632	188052.5	28.30
183.18573	66418.1	10.00
216.20780	7350.9	1.11
251.13915	31320.3	4.71
273.26459	27139.9	4.09
292.20197	15066.8	2.27
308.19681	79137.2	11.91
393.28599	154473.9	23.25



NL: 3.89E6  
 Apotteri#2119 RT: 5.27  
 AV: 1 T: FTMS + p ESI  
 Full ms [100.00-1500.00]

NL: 6.60E5  
 Apotteri#2106-2139 RT:  
 5.25-5.32 AV: 6 F: FTMS  
 + p ESI d Full ms2  
 452.35@hcd35.00  
 [50.00-480.00]