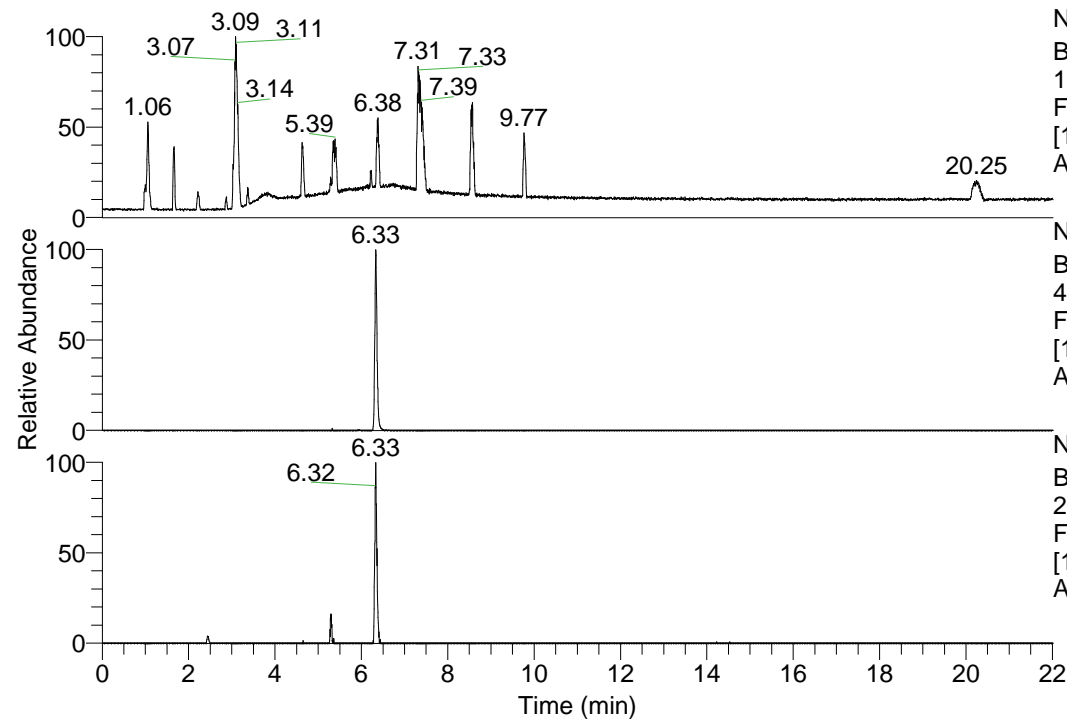


RT: 0.00 - 22.01



NL: 1.69E8
 Base Peak m/z=
 100.00000-1500.00000 F:
 FTMS + p ESI Full ms
 [100.00-1500.00] MS
 Apotteri_HDX

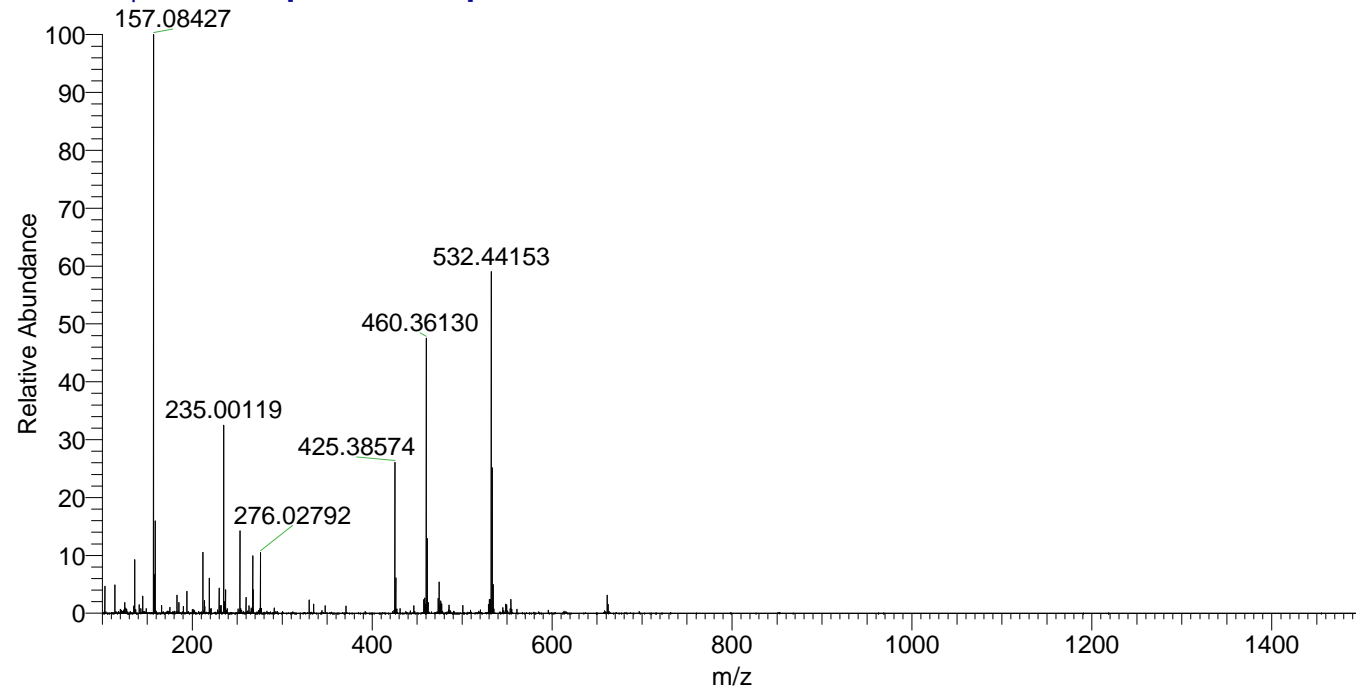
NL: 1.53E7
 Base Peak m/z=
 460.35747-460.36207 F:
 FTMS + p ESI Full ms
 [100.00-1500.00] MS
 Apotteri_HDX

NL: 4.61E5
 Base Peak m/z=
 231.18578-231.18810 F:
 FTMS + p ESI Full ms
 [100.00-1500.00] MS
 Apotteri_HDX

Apotteri_HDX#1009 RT: 6.33
 T: FTMS + p ESI Full ms [100.00-1500.00]
 m/z= 460.00000-461.00000

m/z	Intensity	Relative	Delta (ppm)	Composition
460.36130	13671856.0	100.00	1.15	C ₂₂ H ₃₂ ² H ₈ O ₄ N ₆
			-2.22	C ₂₂ H ₃₄ ² H ₇ O ₄ N ₆
			4.51	C ₂₂ H ₃₀ ² H ₉ O ₄ N ₆

Apotteri_HDX #1009 RT: 6.33 AV: 1 NL: 2.88E7
 T: FTMS + p ESI Full ms [100.00-1500.00]



Apotteri_HDX #1009 RT: 6.33 AV: 1 NL: 1.37E7
 T: FTMS + p ESI Full ms [100.00-1500.00]

