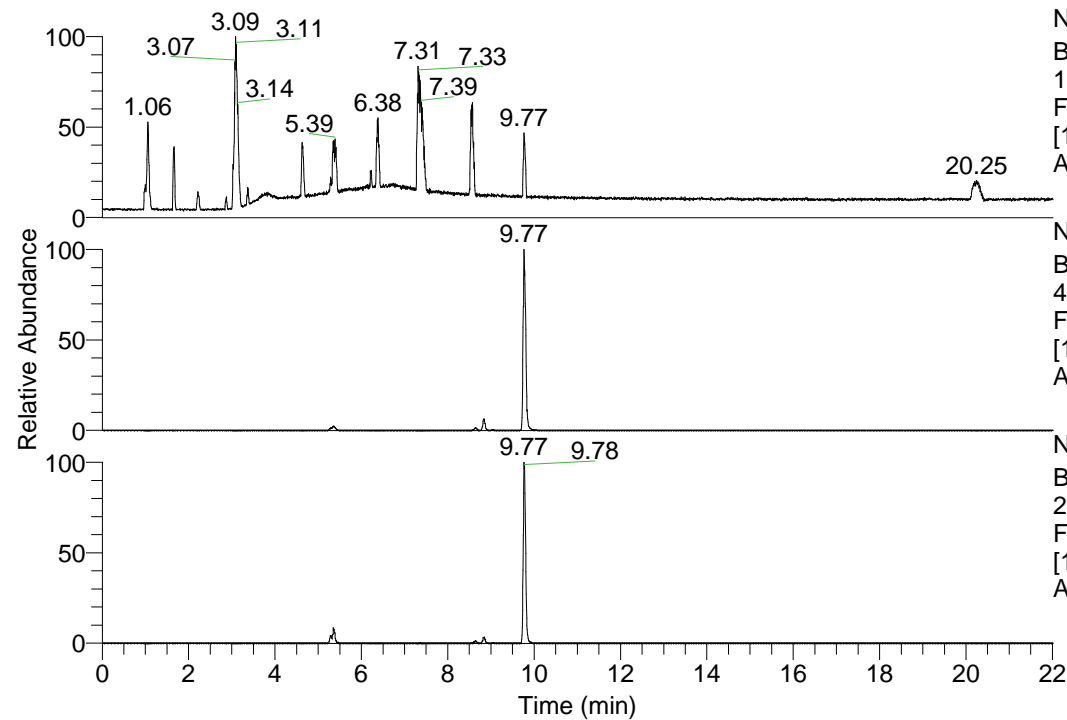


RT: 0.00 - 22.01



NL: 1.69E8
 Base Peak m/z=
 100.00000-1500.00000 F:
 FTMS + p ESI Full ms
 [100.00-1500.00] MS
 Apotteri_HDX

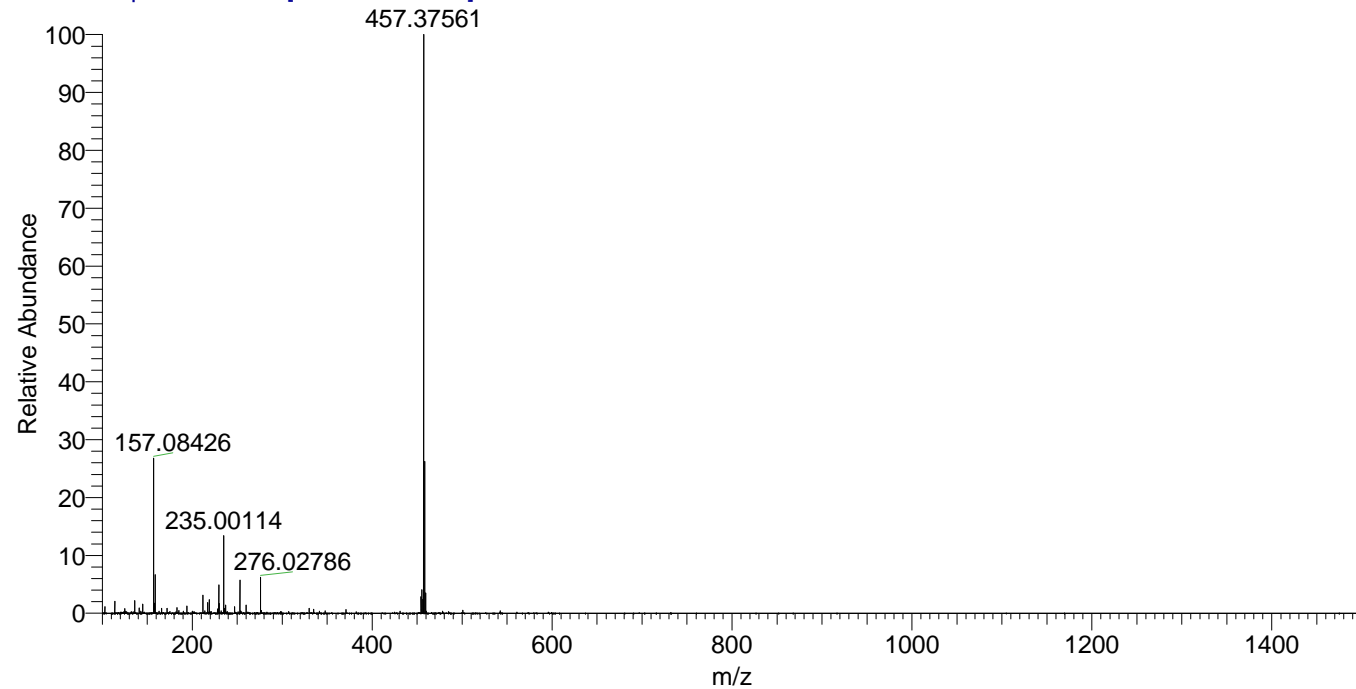
NL: 7.91E7
 Base Peak m/z=
 457.37194-457.37652 F:
 FTMS + p ESI Full ms
 [100.00-1500.00] MS
 Apotteri_HDX

NL: 3.81E6
 Base Peak m/z=
 229.69302-229.69532 F:
 FTMS + p ESI Full ms
 [100.00-1500.00] MS
 Apotteri_HDX

Apotteri_HDX#1586 RT: 9.77
 T: FTMS + p ESI Full ms [100.00-1500.00]
 m/z = 457.00000-458.00000

m/z	Intensity	Relative	Delta (ppm)	Composition
457.37561	75745752.0	100.00	0.84	C ₂₃ H ₃₅ ² H ₇ O ₃ N ₆
			-2.55	C ₂₃ H ₃₇ ² H ₆ O ₃ N ₆
			4.22	C ₂₃ H ₃₃ ² H ₈ O ₃ N ₆

Apotteri_HDX #1586 RT: 9.77 AV: 1 NL: 7.49E7
 T: FTMS + p ESI Full ms [100.00-1500.00]



Apotteri_HDX #1586 RT: 9.77 AV: 1 NL: 7.49E7
 T: FTMS + p ESI Full ms [100.00-1500.00]

