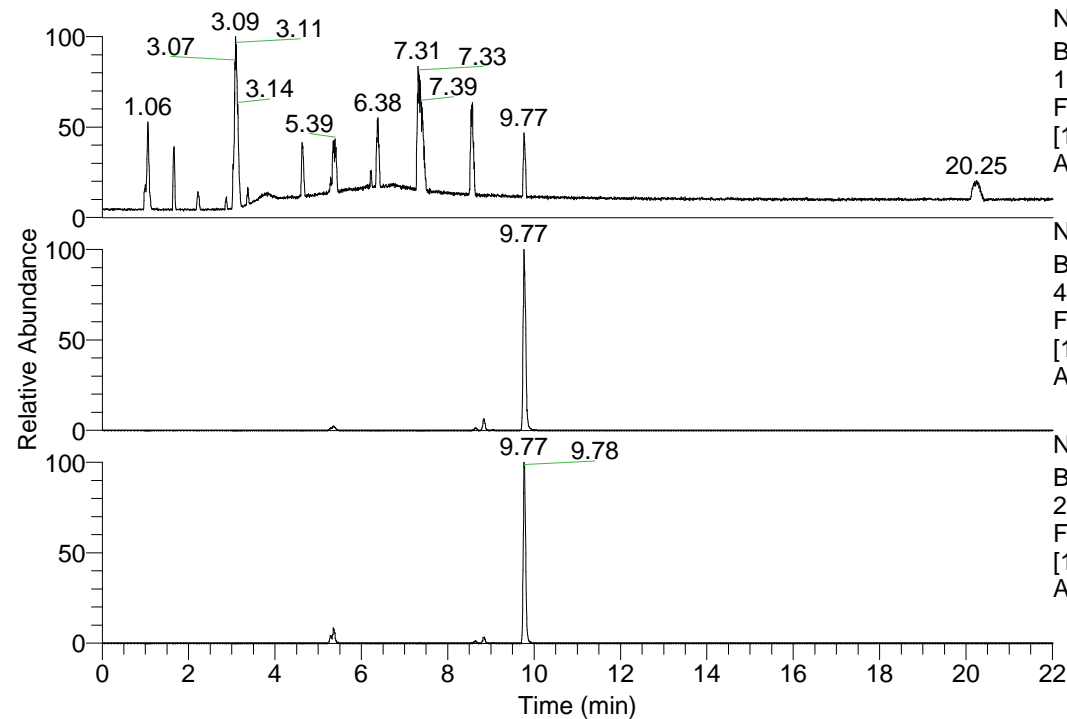


RT: 0.00 - 22.01



NL: 1.69E8
 Base Peak m/z=
 100.00000-1500.00000 F:
 FTMS + p ESI Full ms
 [100.00-1500.00] MS
 Apotteri_HDX

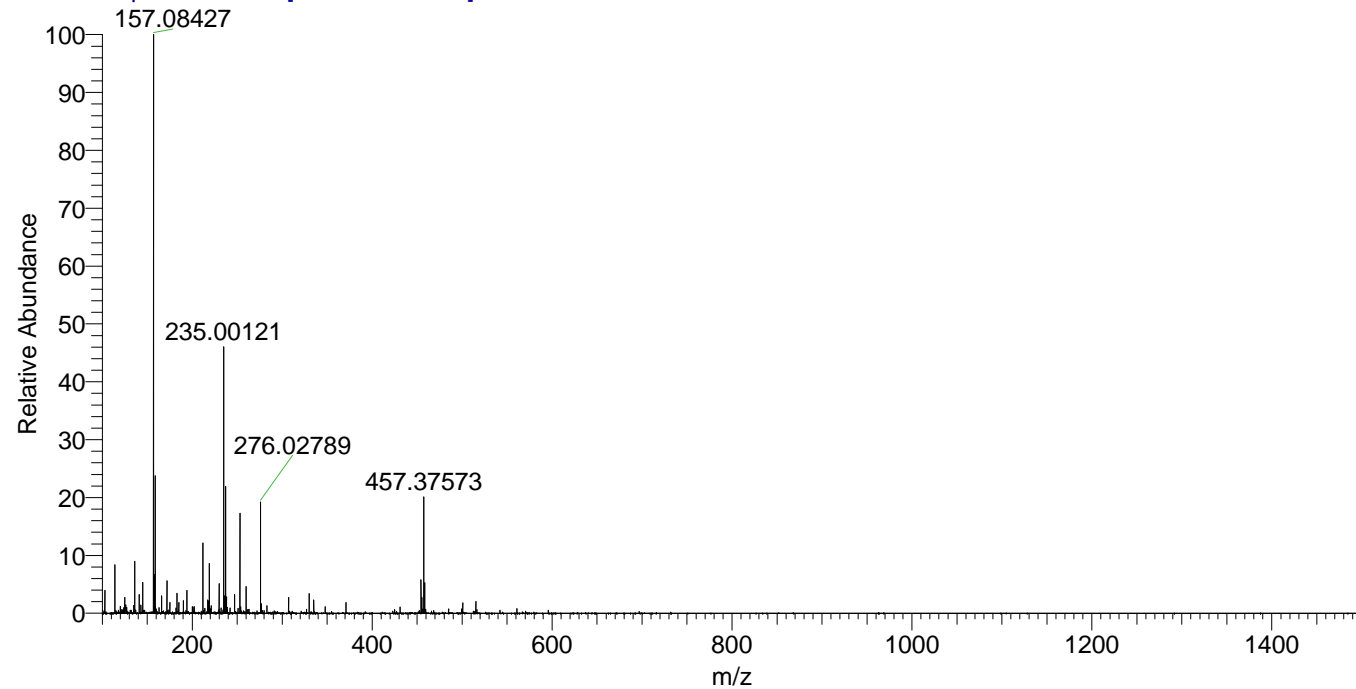
NL: 7.91E7
 Base Peak m/z=
 457.37194-457.37652 F:
 FTMS + p ESI Full ms
 [100.00-1500.00] MS
 Apotteri_HDX

NL: 3.81E6
 Base Peak m/z=
 229.69302-229.69532 F:
 FTMS + p ESI Full ms
 [100.00-1500.00] MS
 Apotteri_HDX

Apotteri_HDX#1434 RT: 8.84
 T: FTMS + p ESI Full ms [100.00-1500.00]
 m/z= 457.00000-458.00000

m/z	Intensity	Relative	Delta (ppm)	Composition
457.37573	3801329.0	100.00	1.10	C ₂₃ H ₃₅ ² H ₇ O ₃ N ₆
			-2.28	C ₂₃ H ₃₇ ² H ₆ O ₃ N ₆
			4.49	C ₂₃ H ₃₃ ² H ₈ O ₃ N ₆

Apotteri_HDX #1434 RT: 8.84 AV: 1 NL: 1.88E7
 T: FTMS + p ESI Full ms [100.00-1500.00]



Apotteri_HDX #1434 RT: 8.84 AV: 1 NL: 3.78E6
 T: FTMS + p ESI Full ms [100.00-1500.00]

