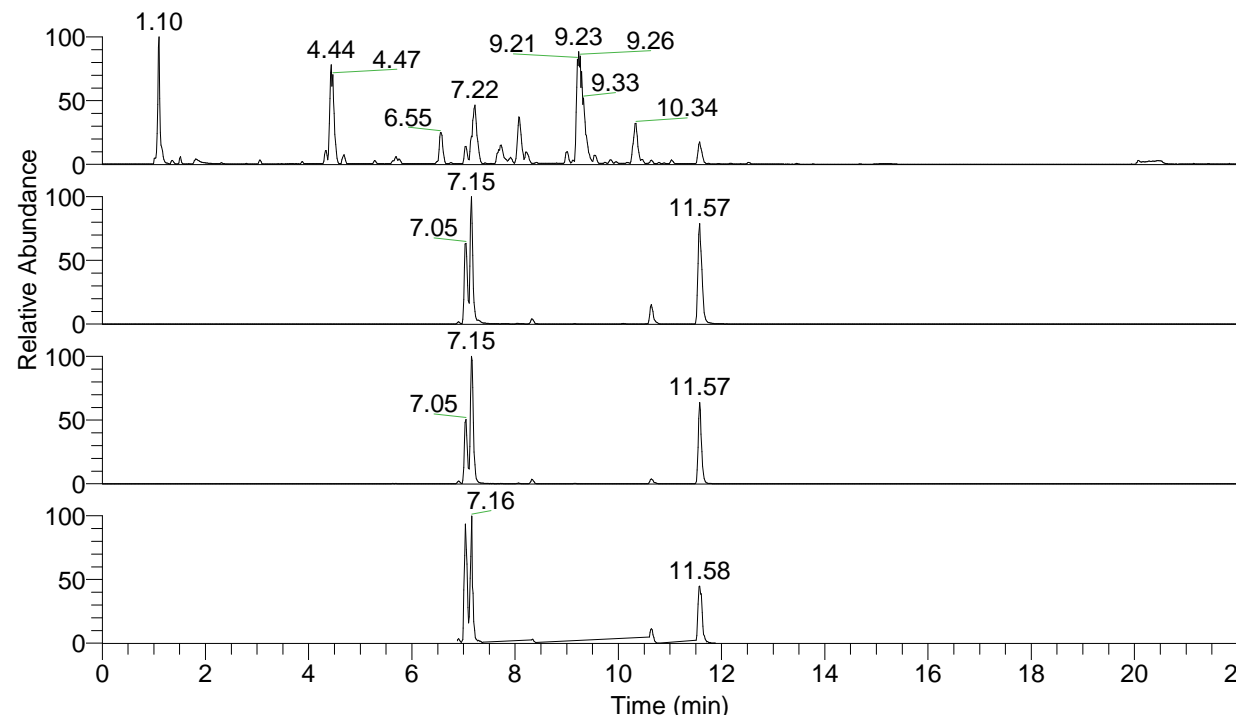


RT: 0.00 - 22.00



NL: 1.25E8
 Base Peak m/z= 100.00000-1500.00000 F:
 FTMS + p ESI Full ms [100.00-1500.00]
 MS Apotteri

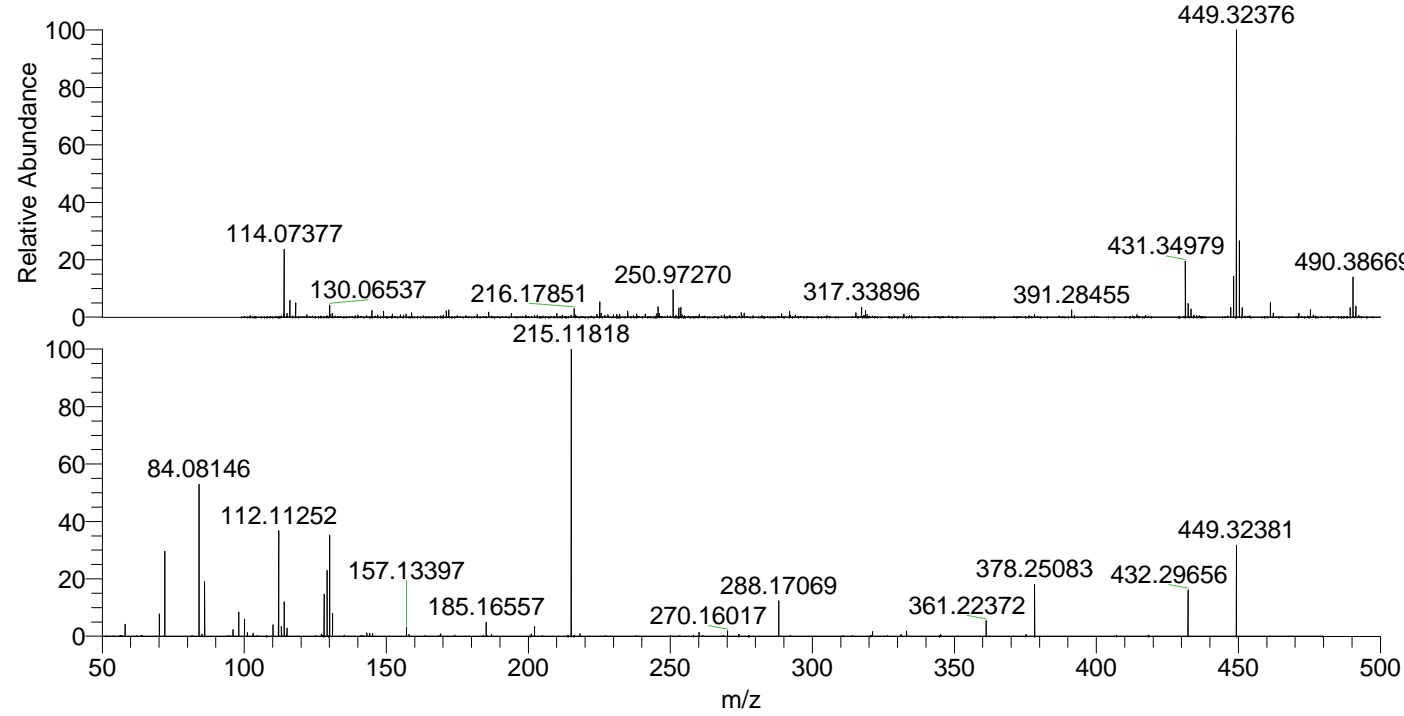
NL: 2.79E7
 Base Peak m/z= 449.32176-449.32626 F:
 FTMS + p ESI Full ms [100.00-1500.00]
 MS Apotteri

NL: 5.72E6
 Base Peak m/z= 225.16479-225.16705 F:
 FTMS + p ESI Full ms [100.00-1500.00]
 MS Apotteri

NL: 3.33E6
 Base Peak m/z= 50.00000-1500.00000 F:
 FTMS + p ESI d Full ms2
 449.32@hcd35.00 [50.00-475.00] MS
 Apotteri

Apotteri#4270-4292 RT: 10.62-10.67
 F: FTMS + p ESI d Full ms2 449.32 ...
 m/z= 50.00000-1000.00000

m/z	Intensity	Relative
58.06601	12690.8	4.16
70.06595	23720.9	7.77
72.08160	90596.7	29.67
84.08146	161298.2	52.83
85.07661	2176.0	0.71
86.06073	59444.5	19.47
96.08146	6912.6	2.26
98.09714	25812.7	8.45
100.07633	18045.5	5.91
101.10789	3797.7	1.24
103.08737	3219.1	1.05
103.12351	1966.7	0.64
110.09698	12294.2	4.03
112.07637	15301.3	5.01
112.11252	111669.3	36.58
113.10790	10156.7	3.33
114.09180	37581.6	12.31
115.12352	8742.8	2.86
127.12339	2381.5	0.78
128.10729	44229.3	14.49
129.13893	71604.4	23.45
130.06532	109416.8	35.84
131.11827	24256.0	7.94
143.11819	3614.1	1.18
144.12625	3281.4	1.07
145.13380	2794.9	0.92
157.13397	9709.6	3.18
158.05993	1918.2	0.63
169.13343	2722.4	0.89
185.16557	15212.0	4.98
187.08709	1877.2	0.61
201.10285	2094.2	0.69
202.19150	10194.5	3.34
215.11818	305307.6	100.00
218.18670	2635.4	0.86
260.13893	4388.4	1.44
270.16017	5746.2	1.88
274.15507	2022.0	0.66
288.17069	37713.5	12.35
321.19184	5026.1	1.65
331.21296	1938.1	0.63
333.19205	5284.5	1.73
345.22703	1775.2	0.58
361.22372	16962.7	5.56
375.24148	1578.1	0.52
378.25083	54589.8	17.88
432.29656	49487.3	16.21
449.32381	95855.6	31.40



NL: 4.06E6
 Apotteri#4279 RT: 10.64
 AV: 1 T: FTMS + p ESI
 Full ms [100.00-1500.00]

NL: 3.02E5
 Apotteri#4267-4294 RT:
 10.62-10.67 AV: 5 F:
 FTMS + p ESI d Full ms2
 449.32@hcd35.00
 [50.00-475.00]