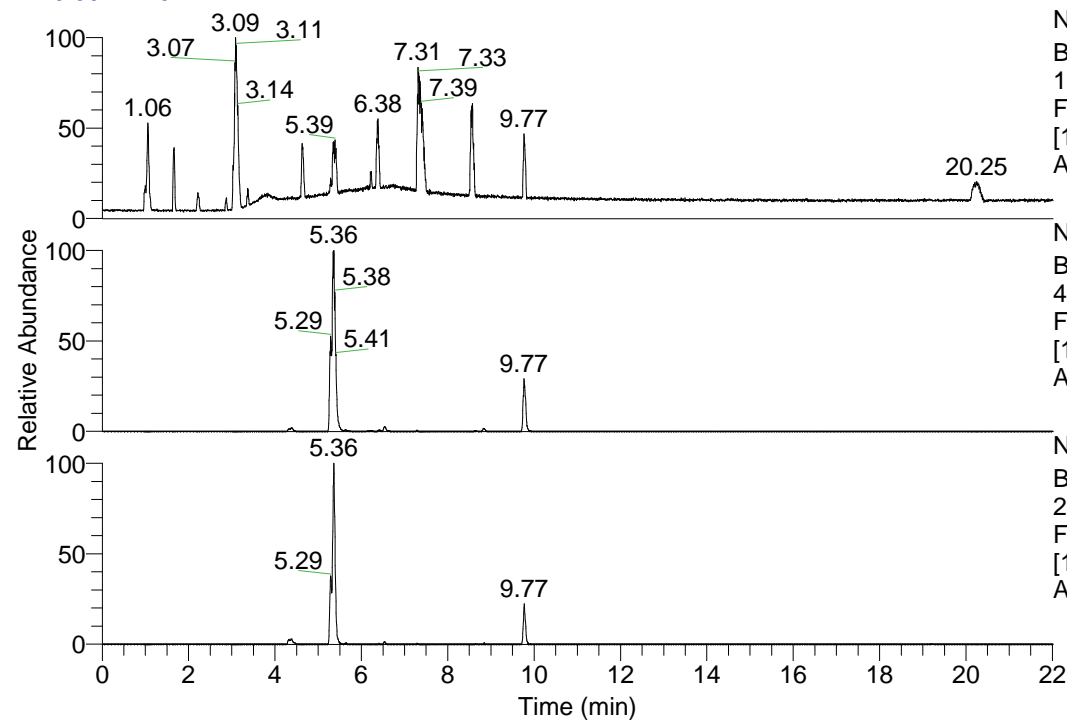


RT: 0.00 - 22.01



NL: 1.69E8
 Base Peak m/z=
 100.00000-1500.00000 F:
 FTMS + p ESI Full ms
 [100.00-1500.00] MS
 Apotteri_HDX

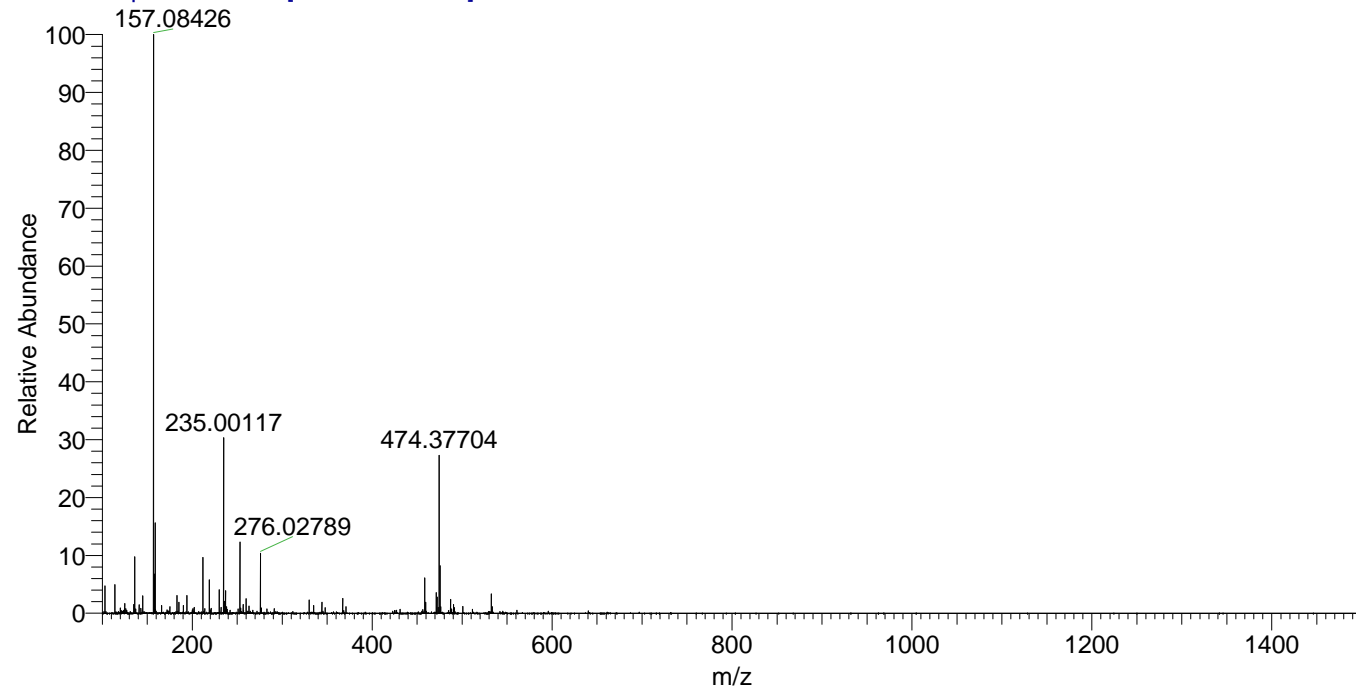
Apotteri_HDX#1046 RT: 6.54
 T: FTMS + p ESI Full ms [100.00-1500.00]
 m/z = 458.00000-459.00000

m/z	Intensity	Relative	Delta (ppm)	Composition
458.38208	1778849.1	100.00	1.26	C ₂₃ H ₃₄ ² H ₈ O ₃ N ₆
			-2.12	C ₂₃ H ₃₆ ² H ₇ O ₃ N ₆
			4.63	C ₂₃ H ₃₂ ² H ₉ O ₃ N ₆

NL: 7.17E7
 Base Peak m/z=
 458.37822-458.38280 F:
 FTMS + p ESI Full ms
 [100.00-1500.00] MS
 Apotteri_HDX

NL: 5.72E6
 Base Peak m/z=
 230.19615-230.19845 F:
 FTMS + p ESI Full ms
 [100.00-1500.00] MS
 Apotteri_HDX

Apotteri_HDX #1046 RT: 6.54 AV: 1 NL: 2.81E7
 T: FTMS + p ESI Full ms [100.00-1500.00]



Apotteri_HDX #1046 RT: 6.54 AV: 1 NL: 1.72E6
 T: FTMS + p ESI Full ms [100.00-1500.00]

