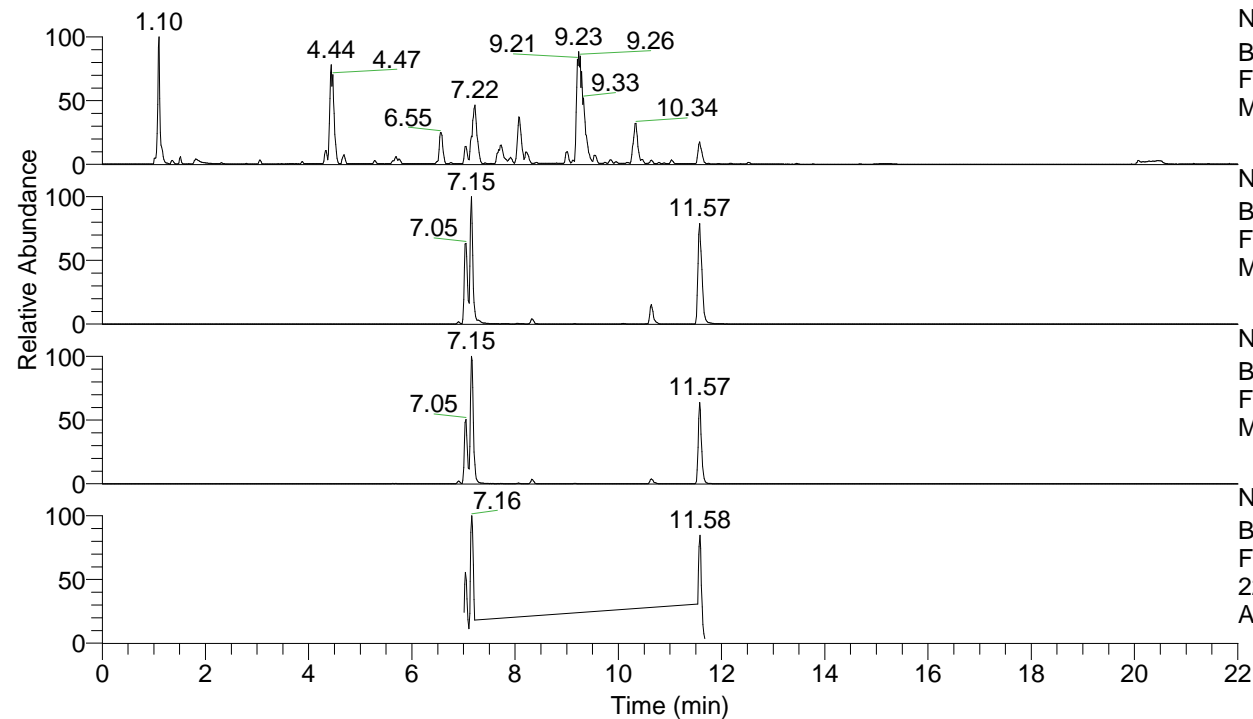


RT: 0.00 - 22.00



NL: 1.25E8
 Base Peak m/z= 100.00000-1500.00000 F:
 FTMS + p ESI Full ms [100.00-1500.00]
 MS Apotteri

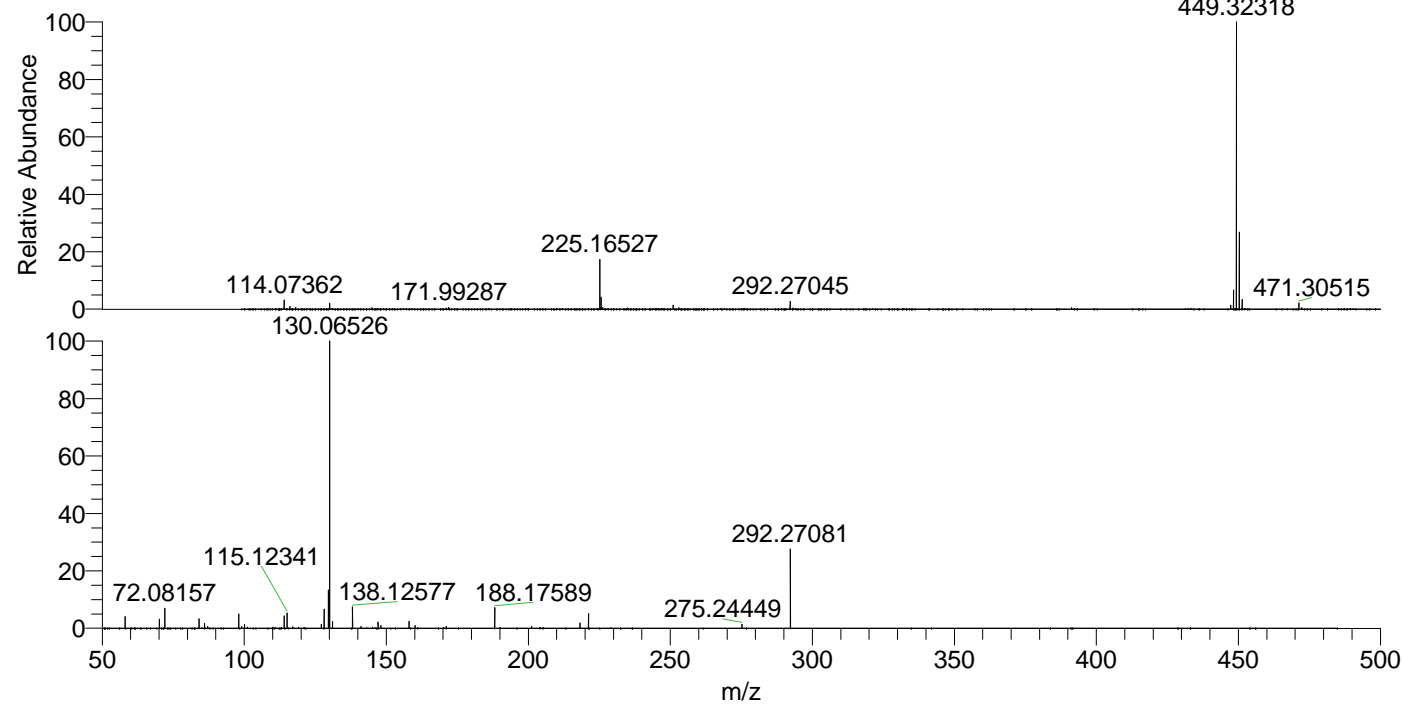
NL: 2.79E7
 Base Peak m/z= 449.32176-449.32626 F:
 FTMS + p ESI Full ms [100.00-1500.00]
 MS Apotteri

NL: 5.72E6
 Base Peak m/z= 225.16479-225.16705 F:
 FTMS + p ESI Full ms [100.00-1500.00]
 MS Apotteri

NL: 1.54E6
 Base Peak m/z= 50.00000-1500.00000 F:
 FTMS + p ESI d Full ms2
 225.17@hcd35.00 [50.00-480.00] MS
 Apotteri

Apotteri#4637-4665 RT: 11.54-11.61
 F: FTMS + p ESI d Full ms2 225.17 ...
 m/z= 50.00000-1000.00000

m/z	Intensity	Relative
58.06601	36456.0	4.03
70.06593	28038.2	3.10
72.08157	64497.8	7.14
84.08147	29533.7	3.27
86.06065	15944.8	1.76
87.09228	5307.1	0.59
98.09689	45319.5	5.01
99.09209	5152.3	0.57
100.07616	11186.7	1.24
114.09166	38446.0	4.25
115.12341	48232.2	5.34
127.12302	12364.9	1.37
128.10721	59448.0	6.58
129.61266	120126.9	13.29
130.06526	903769.9	100.00
131.06853	5325.6	0.59
131.11798	21205.7	2.35
138.12577	66750.1	7.39
141.13883	6013.2	0.67
147.11295	19524.0	2.16
147.13682	12977.9	1.44
148.14458	7991.3	0.88
158.06008	21508.4	2.38
160.14454	8166.2	0.90
171.14952	5382.1	0.60
188.17589	66099.6	7.31
201.15984	5644.8	0.62
218.18633	16880.6	1.87
221.19749	45913.8	5.08
275.24449	12861.2	1.42
292.27081	248395.0	27.48



NL: 2.10E7
 Apotteri#4651 RT: 11.57
 AV: 1 T: FTMS + p ESI
 Full ms [100.00-1500.00]

NL: 8.92E5
 Apotteri#4637-4668 RT:
 11.54-11.61 AV: 6 F:
 FTMS + p ESI d Full ms2
 225.17@hcd35.00
 [50.00-480.00]