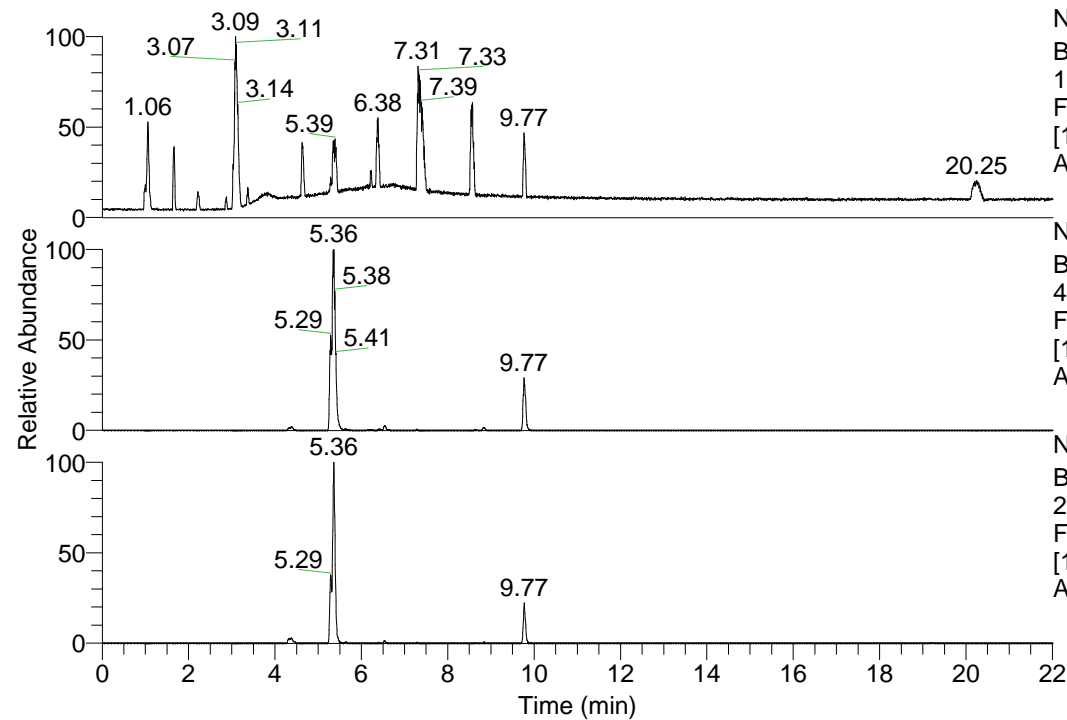


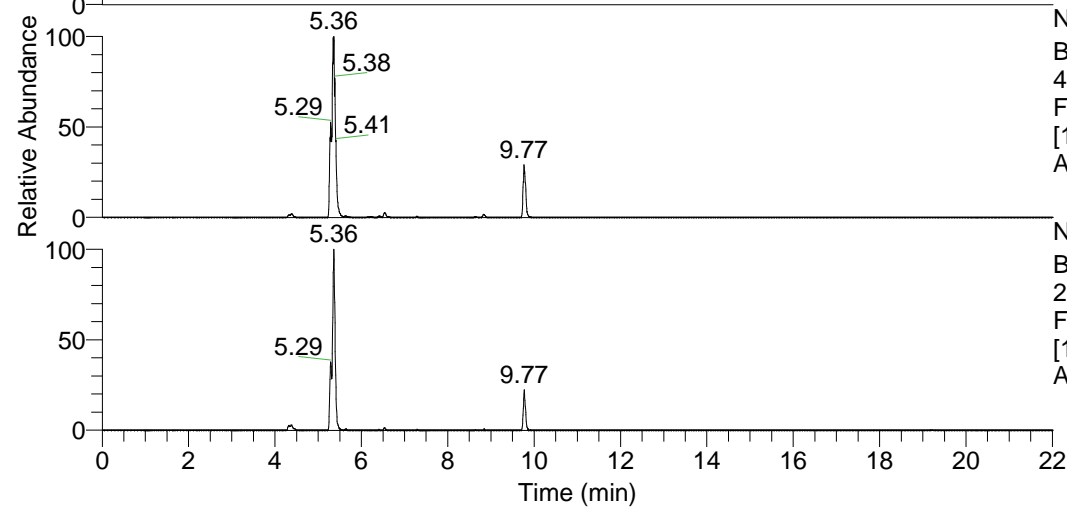
RT: 0.00 - 22.01



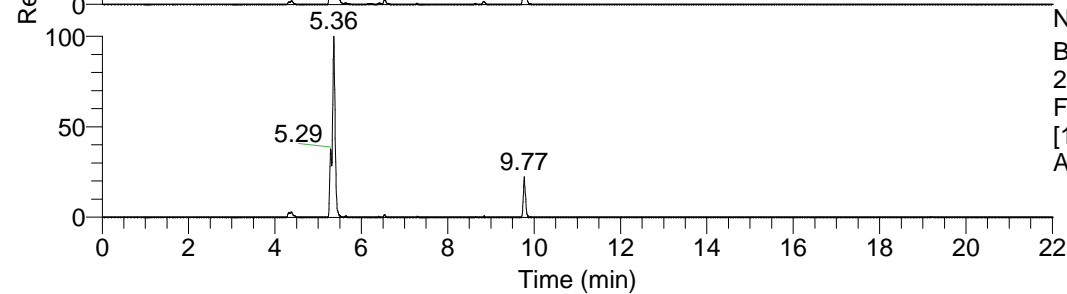
NL: 1.69E8
 Base Peak m/z=
 100.00000-1500.00000 F:
 FTMS + p ESI Full ms
 [100.00-1500.00] MS
 Apotteri_HDX

Apotteri_HDX#834 RT: 5.29
 T: FTMS + p ESI Full ms [100.00-1500.00]
 m/z = 458.00000-459.00000

m/z	Intensity	Relative	Delta (ppm)	Composition
458.38196	37783452.0	100.00	0.99	C ₂₃ H ₃₄ ² H ₈ O ₃ N ₆
			-2.39	C ₂₃ H ₃₆ ² H ₇ O ₃ N ₆
			4.37	C ₂₃ H ₃₂ ² H ₉ O ₃ N ₆

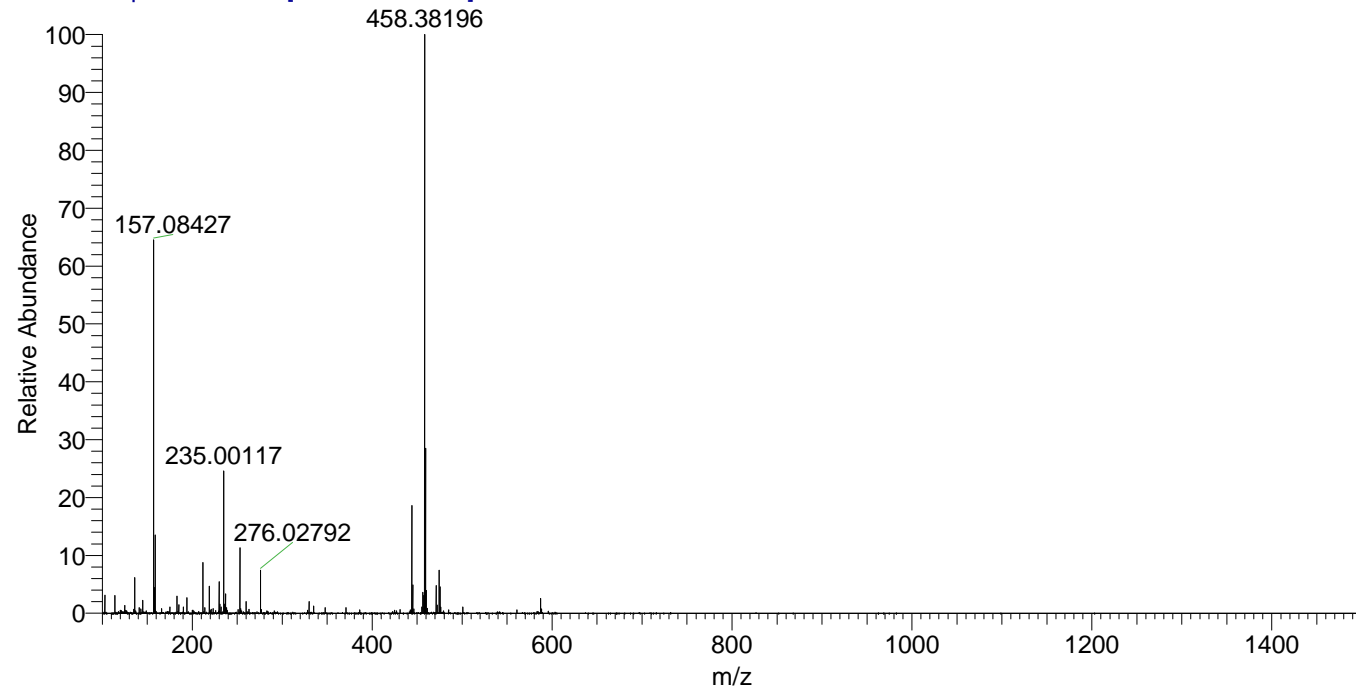


NL: 7.17E7
 Base Peak m/z=
 458.37822-458.38280 F:
 FTMS + p ESI Full ms
 [100.00-1500.00] MS
 Apotteri_HDX



NL: 5.72E6
 Base Peak m/z=
 230.19615-230.19845 F:
 FTMS + p ESI Full ms
 [100.00-1500.00] MS
 Apotteri_HDX

Apotteri_HDX #834 RT: 5.29 AV: 1 NL: 3.73E7
 T: FTMS + p ESI Full ms [100.00-1500.00]



Apotteri_HDX #834 RT: 5.29 AV: 1 NL: 3.73E7
 T: FTMS + p ESI Full ms [100.00-1500.00]

