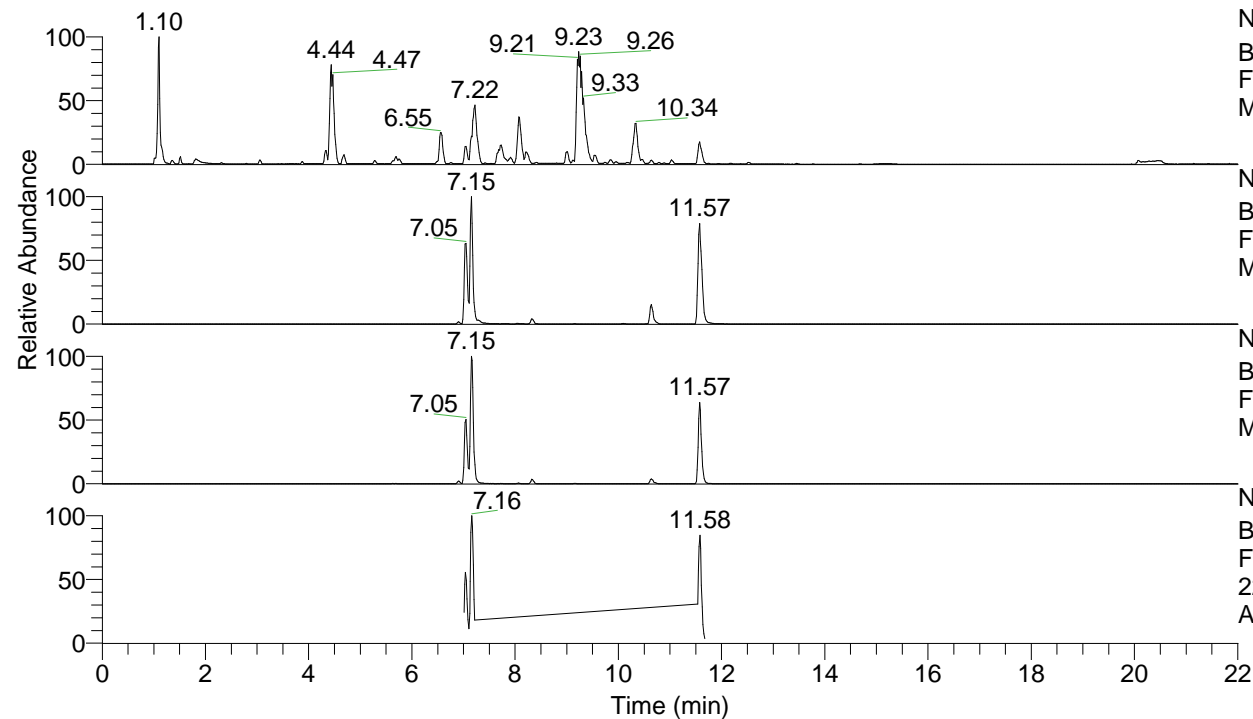


RT: 0.00 - 22.00



NL: 1.25E8
 Base Peak m/z= 100.00000-1500.00000 F:
 FTMS + p ESI Full ms [100.00-1500.00]
 MS Apotteri

NL: 2.79E7
 Base Peak m/z= 449.32176-449.32626 F:
 FTMS + p ESI Full ms [100.00-1500.00]
 MS Apotteri

NL: 5.72E6
 Base Peak m/z= 225.16479-225.16705 F:
 FTMS + p ESI Full ms [100.00-1500.00]
 MS Apotteri

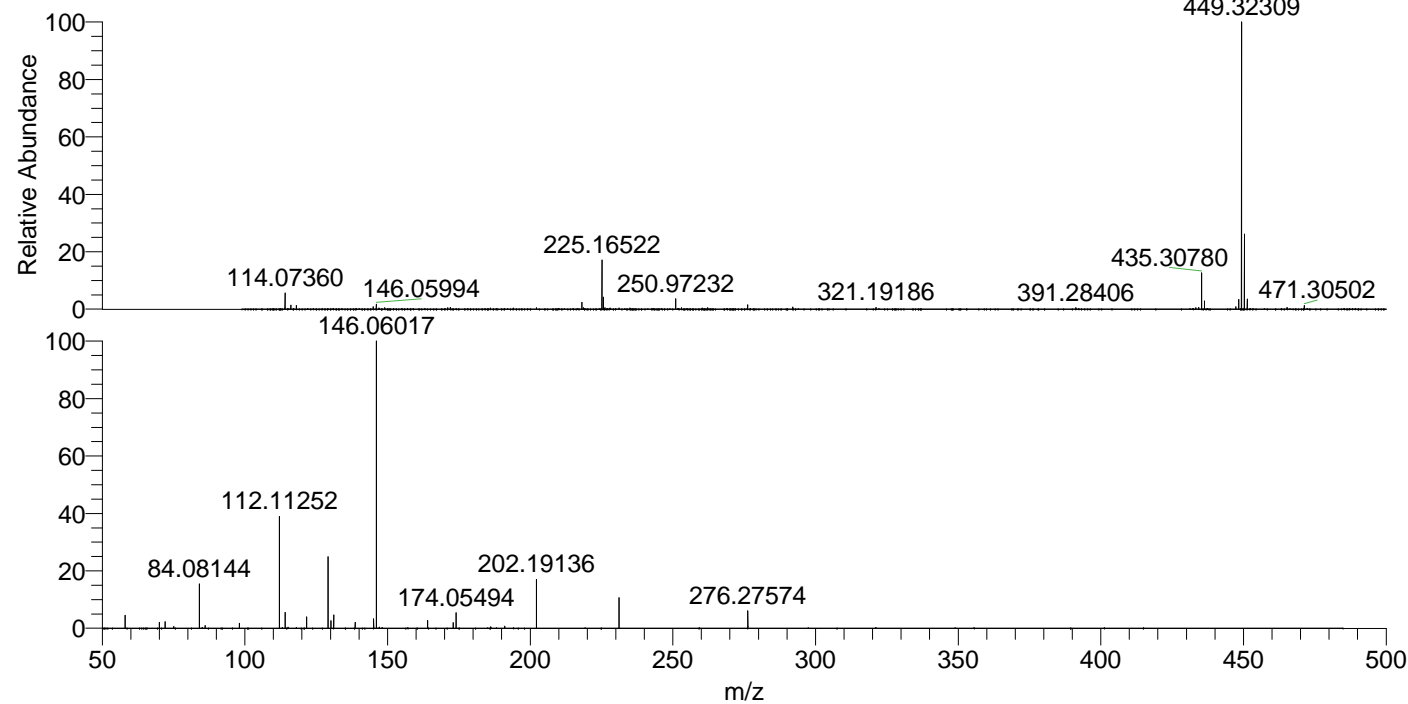
NL: 1.54E6
 Base Peak m/z= 50.00000-1500.00000 F:
 FTMS + p ESI d Full ms2
 225.17@hcd35.00 [50.00-480.00] MS
 Apotteri

Apotteri#2812-2835 RT: 7.01-7.07 AV: 5

F: FTMS + p ESI d Full ms2 225.17 ...

m/z= 50.00000-1000.00000

m/z	Intensity	Relative
58.06601	26978.4	4.44
70.06586	12409.2	2.04
72.08144	14072.9	2.32
75.09249	3365.2	0.55
84.08144	92980.8	15.30
86.06063	5848.2	0.96
98.09690	10676.7	1.76
112.11252	234760.9	38.62
114.09165	33453.7	5.50
121.61531	23973.0	3.94
129.13877	153785.8	25.30
130.12842	16045.4	2.64
131.11805	27920.8	4.59
138.64156	12384.9	2.04
145.05206	7232.0	1.19
145.13358	19998.7	3.29
146.06017	607858.8	100.00
164.07091	16392.8	2.70
173.04756	11922.2	1.96
174.05494	32292.8	5.31
186.19651	3154.0	0.52
191.05790	4110.9	0.68
202.19136	101526.6	16.70
231.11289	63879.0	10.51
276.27574	37595.3	6.18



NL: 1.69E7
 Apotteri#2827 RT: 7.05
 AV: 1 T: FTMS + p ESI
 Full ms [100.00-1500.00]

NL: 5.98E5
 Apotteri#2809-2840 RT:
 7.01-7.07 AV: 5 F: FTMS
 + p ESI d Full ms2
 225.17@hcd35.00
 [50.00-480.00]