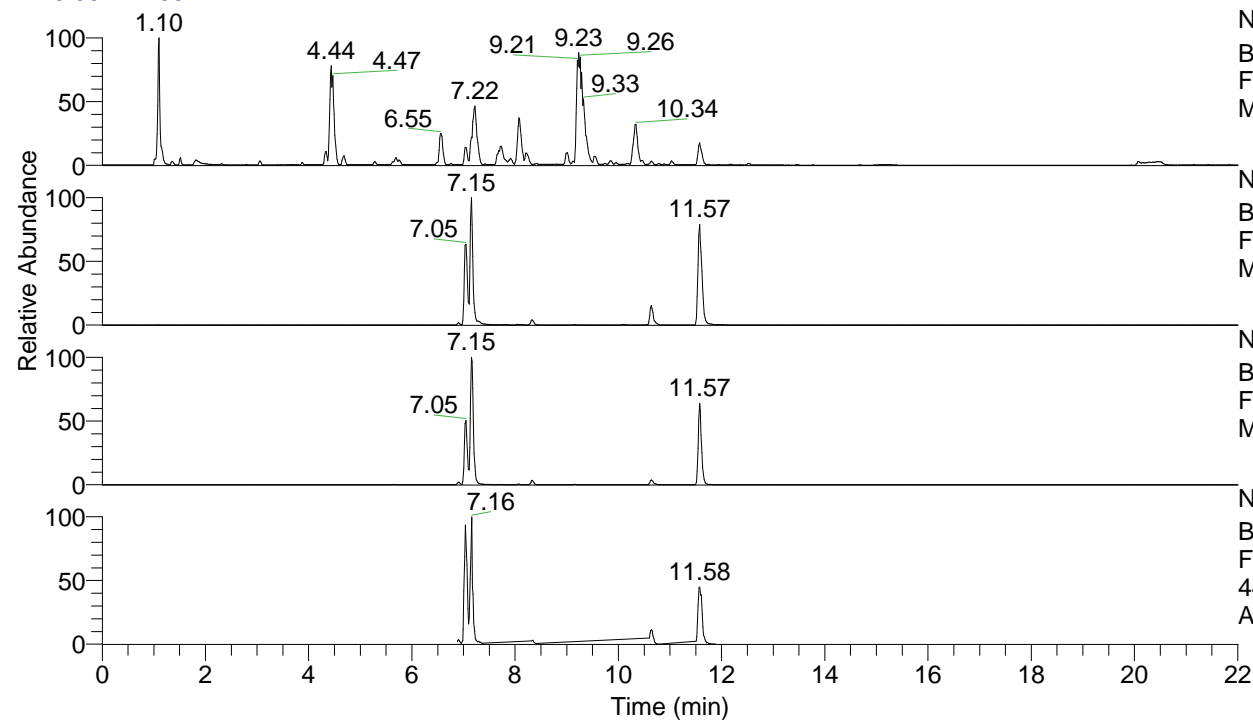


RT: 0.00 - 22.00



NL: 1.25E8
 Base Peak m/z= 100.00000-1500.00000 F:
 FTMS + p ESI Full ms [100.00-1500.00]
 MS Apotteri

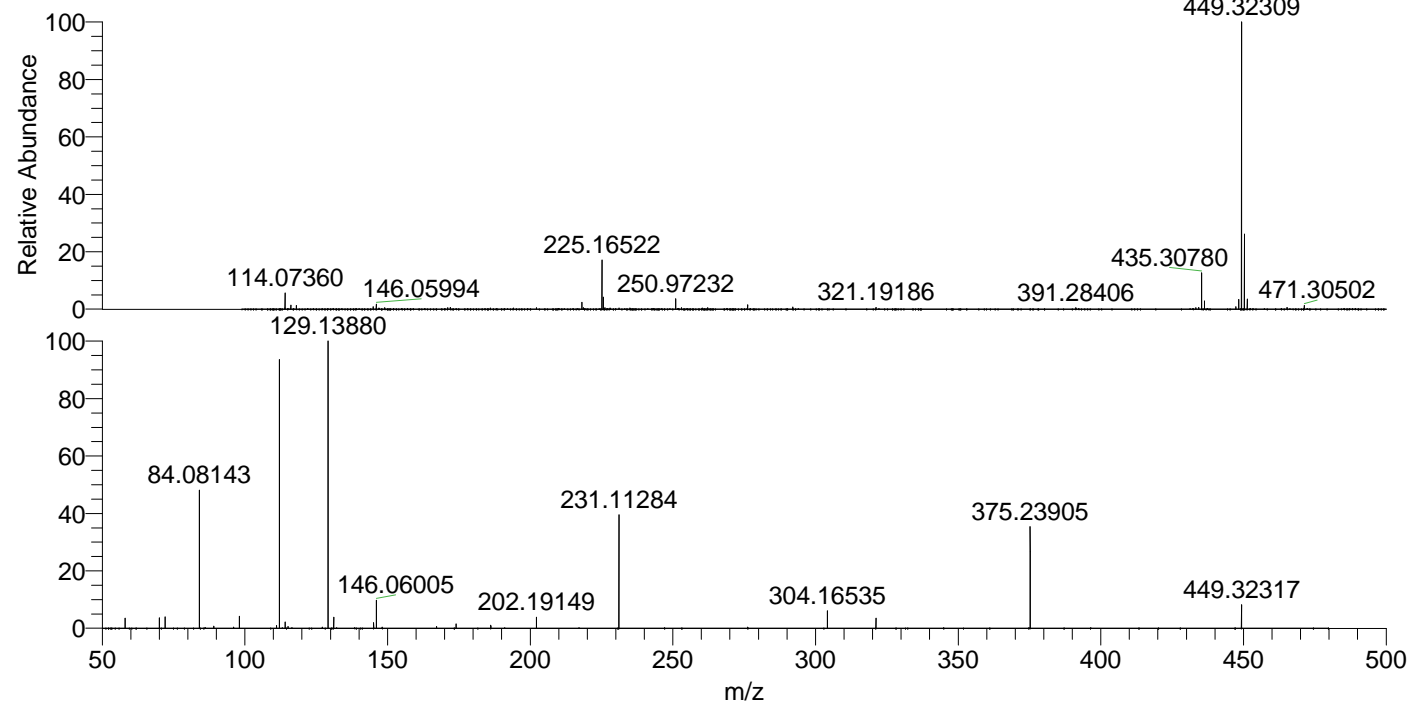
NL: 2.79E7
 Base Peak m/z= 449.32176-449.32626 F:
 FTMS + p ESI Full ms [100.00-1500.00]
 MS Apotteri

NL: 5.72E6
 Base Peak m/z= 225.16479-225.16705 F:
 FTMS + p ESI Full ms [100.00-1500.00]
 MS Apotteri

NL: 3.33E6
 Base Peak m/z= 50.00000-1500.00000 F:
 FTMS + p ESI d Full ms2
 449.32@hcd35.00 [50.00-475.00] MS
 Apotteri

Apotteri#2810-2834 RT: 7.01-7.07 AV: 5
 F: FTMS + p ESI d Full ms2 449.32@h ...
 m/z= 50.00000-1000.00000

m/z	Intensity	Relative
58.06599	72052.2	3.42
70.06591	73113.3	3.47
72.08163	81234.0	3.86
84.08143	986598.5	46.84
89.10781	15153.5	0.72
98.09707	86363.8	4.10
111.10460	20184.1	0.96
112.11252	1911661.9	90.75
114.09175	46649.7	2.21
115.12320	12878.2	0.61
129.13880	2106480.0	100.00
131.11805	78994.1	3.75
145.13357	39846.2	1.89
146.06005	203251.1	9.65
167.15435	12037.9	0.57
174.05504	30662.0	1.46
186.19652	22589.8	1.07
202.19149	77943.6	3.70
231.11284	803770.1	38.16
304.16535	125360.0	5.95
321.19204	72503.1	3.44
375.23905	721447.6	34.25
449.32317	167459.8	7.95



NL: 1.69E7
 Apotteri#2827 RT: 7.05
 AV: 1 T: FTMS + p ESI
 Full ms [100.00-1500.00]

NL: 2.03E6
 Apotteri#2809-2836 RT:
 7.01-7.07 AV: 5 F: FTMS
 + p ESI d Full ms2
 449.32@hcd35.00
 [50.00-475.00]