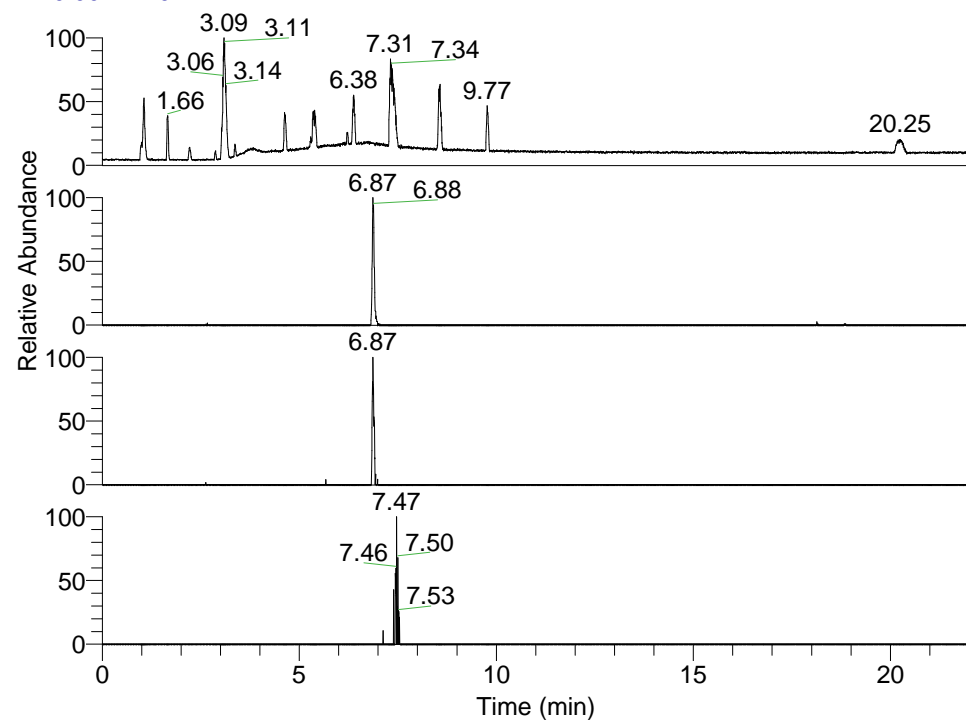


RT: 0.00 - 22.01



NL: 1.69E8  
 Base Peak m/z=  
 100.00000-1500.00000 F: FTMS + p  
 ESI Full ms [100.00-1500.00] MS  
 Apotteri\_HDX

NL: 4.19E5  
 Base Peak m/z=  
 453.35788-453.36242 F: FTMS + p  
 ESI Full ms [100.00-1500.00] MS  
 Apotteri\_HDX

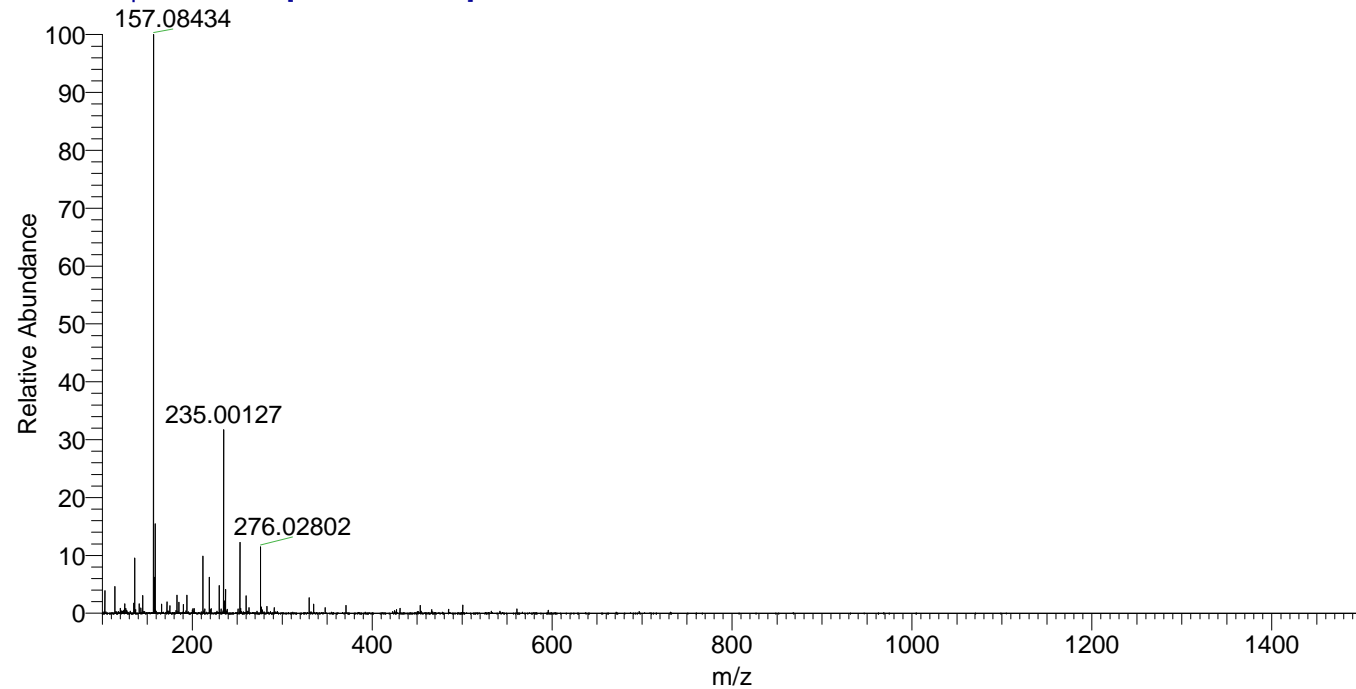
NL: 1.05E5  
 Base Peak m/z=  
 227.68599-227.68827 F: FTMS + p  
 ESI Full ms [100.00-1500.00] MS  
 Apotteri\_HDX

NL: 3.31E4  
 Base Peak m/z=  
 568.35645-568.36213 F: FTMS + p  
 ESI Full ms [100.00-1500.00] MS  
 Apotteri\_HDX

Apotteri\_HDX#1101 RT: 6.87  
 T: FTMS + p ESI Full ms [100.00-1500.00]  
 m/z= 453.00000-454.00000

m/z	Intensity	Relative	Delta (ppm)	Composition
453.36188	418709.7	100.00	1.61	C <sub>24</sub> H <sub>39</sub> <sup>2</sup> H <sub>4</sub> O <sub>3</sub> N <sub>5</sub>
			-1.81	C <sub>24</sub> H <sub>41</sub> <sup>2</sup> H <sub>3</sub> O <sub>3</sub> N <sub>5</sub>
			5.02	C <sub>24</sub> H <sub>37</sub> <sup>2</sup> H <sub>5</sub> O <sub>3</sub> N <sub>5</sub>
			-5.22	C <sub>24</sub> H <sub>43</sub> <sup>2</sup> H <sub>2</sub> O <sub>3</sub> N <sub>5</sub>

Apotteri\_HDX #1101 RT: 6.87 AV: 1 NL: 2.88E7  
 T: FTMS + p ESI Full ms [100.00-1500.00]



Apotteri\_HDX #1101 RT: 6.87 AV: 1 NL: 3.92E5  
 T: FTMS + p ESI Full ms [100.00-1500.00]

