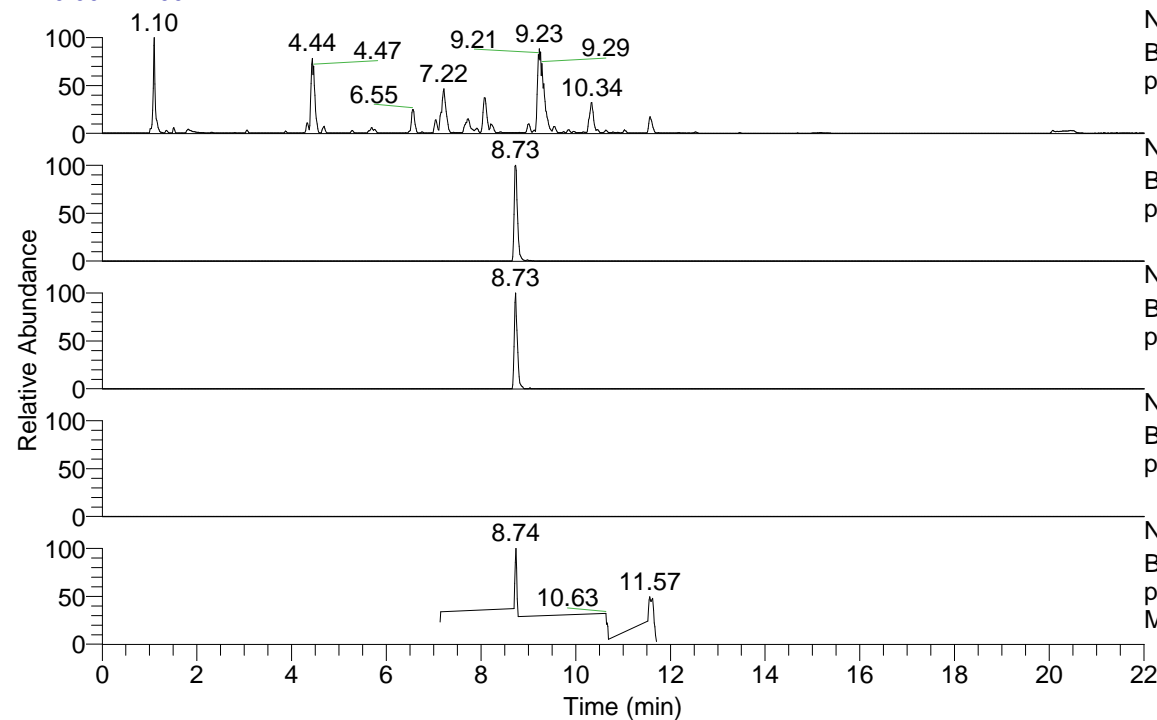


RT: 0.00 - 22.00



NL: 1.25E8
 Base Peak m/z= 100.00000-1500.00000 F: FTMS +
 p ESI Full ms [100.00-1500.00] MS Apotteri

NL: 1.17E6
 Base Peak m/z= 448.32653-448.33101 F: FTMS +
 p ESI Full ms [100.00-1500.00] MS Apotteri

NL: 1.56E5
 Base Peak m/z= 224.66718-224.66942 F: FTMS +
 p ESI Full ms [100.00-1500.00] MS Apotteri

NL: 0
 Base Peak m/z= 562.31882-562.32444 F: FTMS +
 p ESI Full ms [100.00-1500.00] MS Apotteri

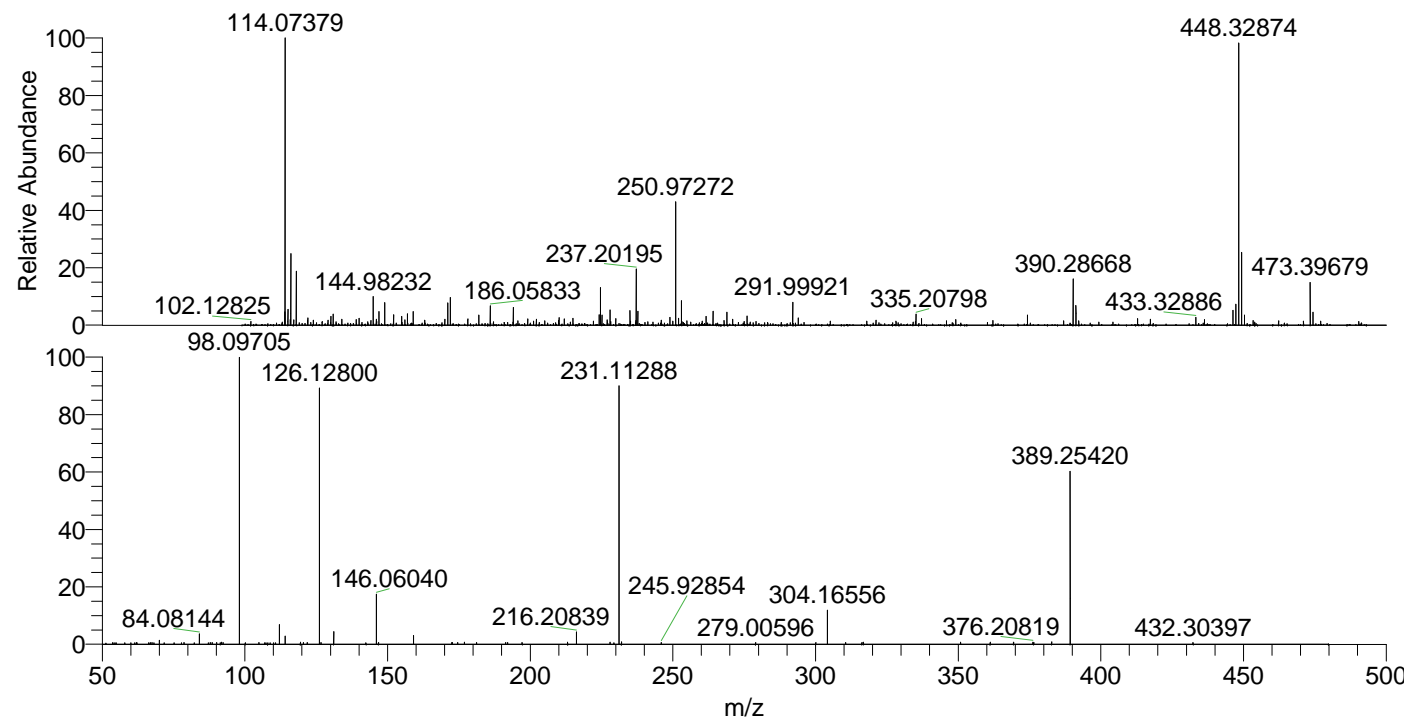
NL: 1.71E5
 Base Peak m/z= 50.00000-1500.00000 F: FTMS +
 p ESI d Full ms2 448.32@hcd35.00 [50.00-475.00]
 MS Apotteri

Apotteri#3492-3519 RT: 8.70-8.77 AV: 6

F: FTMS + p ESI d Full ms2 448.32 ...

m/z= 50.00000-1000.00000

m/z	Intensity	Relative
67.44921	627.0	0.57
68.15308	617.5	0.56
70.06581	1521.3	1.38
71.75582	604.9	0.55
77.81874	617.5	0.56
78.66647	655.8	0.59
84.08144	4083.6	3.70
87.81645	634.2	0.57
88.54987	673.3	0.61
90.13638	654.1	0.59
91.75751	797.9	0.72
92.32506	616.7	0.56
98.09705	110407.8	100.00
104.89762	645.1	0.58
108.87955	631.6	0.57
112.11264	7529.5	6.82
114.09180	3122.6	2.83
119.45027	852.6	0.77
120.55980	686.6	0.62
121.81570	718.4	0.65
126.12800	100533.8	91.06
126.67981	626.3	0.57
131.11825	4918.6	4.45
142.43758	607.1	0.55
146.06040	19178.6	17.37
146.82364	707.6	0.64
159.14911	3346.4	3.03
172.58198	661.9	0.60
172.70790	686.0	0.62
174.60539	711.5	0.64
176.90785	756.6	0.69
181.17076	731.8	0.66
191.37708	704.4	0.64
192.08208	658.0	0.60
197.18215	637.7	0.58
213.11521	784.2	0.71
216.20839	4776.8	4.33
228.01477	773.4	0.70
231.11288	99241.3	89.89
231.99023	888.8	0.80
245.92854	683.5	0.62
279.00596	689.2	0.62
300.08620	749.0	0.68
304.16556	13428.3	12.16
310.55883	681.0	0.62
316.23817	656.8	0.59
316.78166	762.7	0.69
350.86215	774.2	0.70
361.24613	753.9	0.68
369.40989	743.9	0.67
376.20819	782.5	0.71
376.49814	724.5	0.66
382.76940	924.9	0.84
389.25420	67337.0	60.99
432.30397	746.2	0.68



NL: 1.18E6
 Apotteri#3505 RT: 8.73
 AV: 1 T: FTMS + p ESI
 Full ms [100.00-1500.00]

NL: 1.10E5
 Apotteri#3491-3520 RT:
 8.70-8.77 AV: 6 F: FTMS
 + p ESI d Full ms2
 448.32@hcd35.00
 [50.00-475.00]