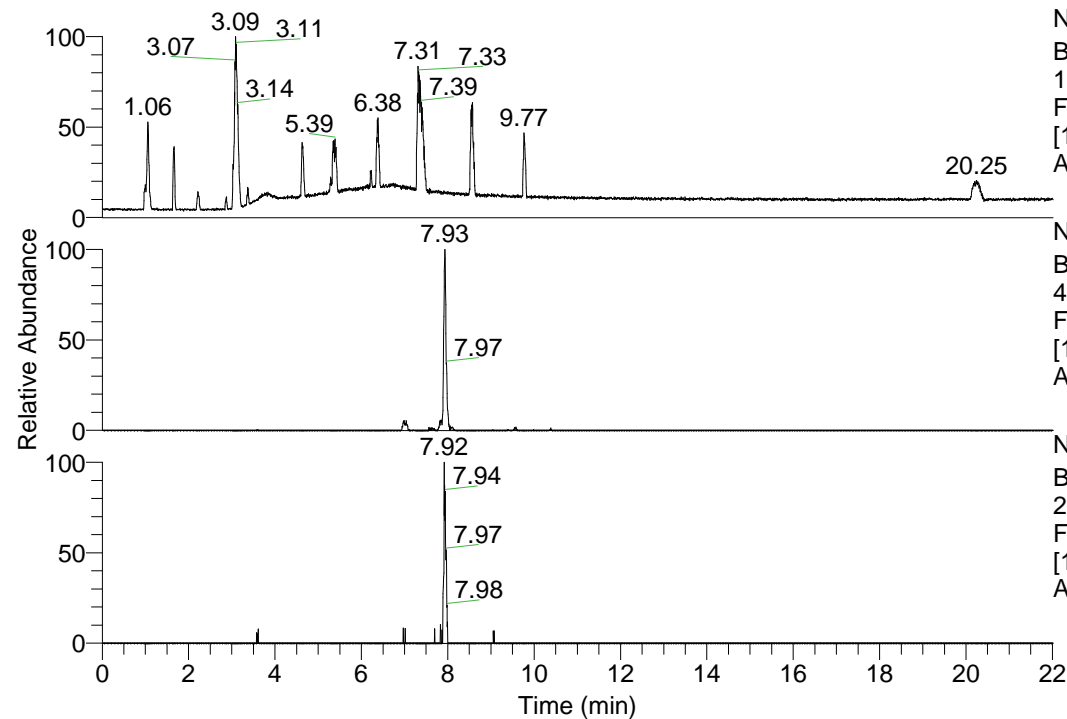


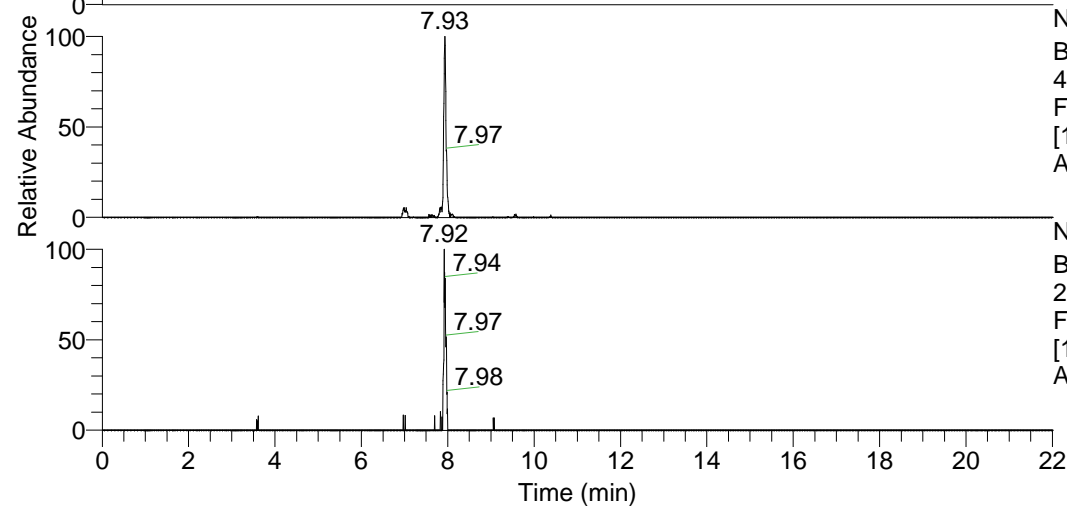
RT: 0.00 - 22.01



NL: 1.69E8
 Base Peak m/z=
 100.00000-1500.00000 F:
 FTMS + p ESI Full ms
 [100.00-1500.00] MS
 Apotteri_HDX

Apotteri_HDX#1281 RT: 7.93
 T: FTMS + p ESI Full ms [100.00-1500.00]
 m/z= 454.00000-455.00000

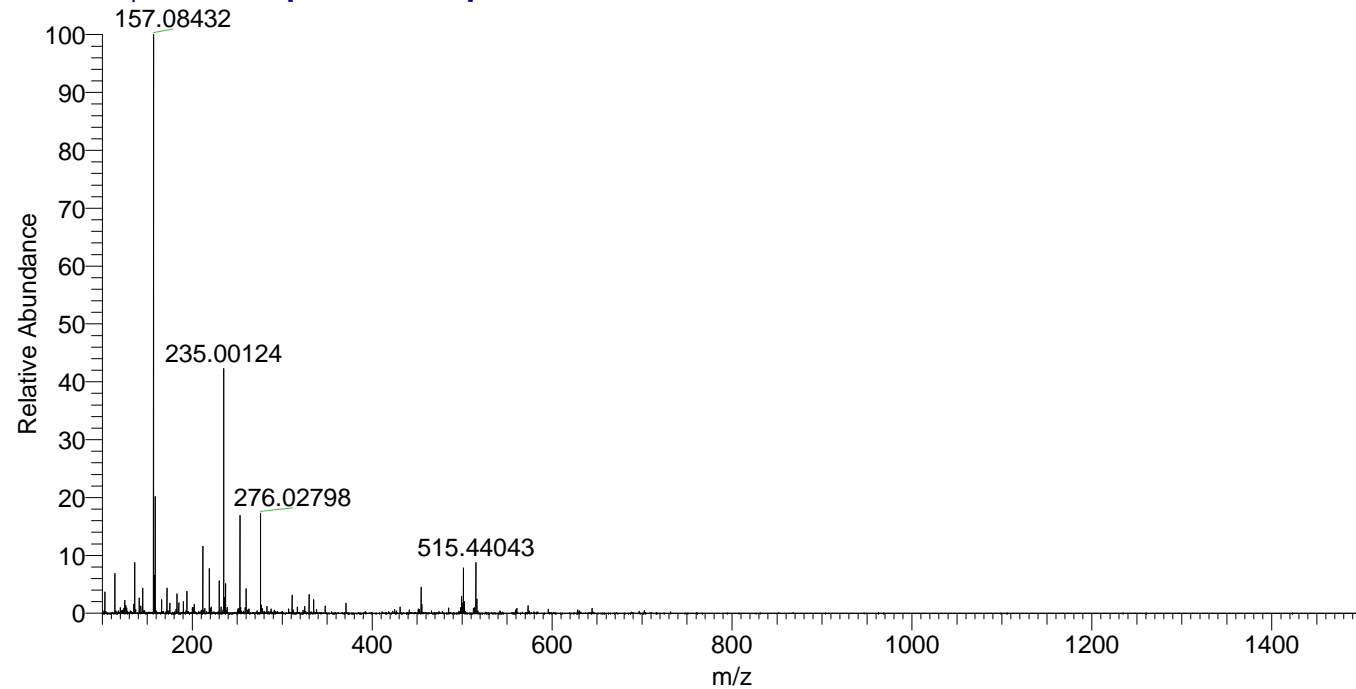
m/z	Intensity	Relative	Delta (ppm)	Composition
454.39032	1032555.6	100.00	1.39	C ₂₄ H ₃₈ ² H ₆ O ₂ N ₆
			-2.01	C ₂₄ H ₄₀ ² H ₅ O ₂ N ₆
			4.80	C ₂₄ H ₃₆ ² H ₇ O ₂ N ₆



NL: 1.10E6
 Base Peak m/z=
 454.38642-454.39096 F:
 FTMS + p ESI Full ms
 [100.00-1500.00] MS
 Apotteri_HDX

NL: 5.45E4
 Base Peak m/z=
 228.20026-228.20254 F:
 FTMS + p ESI Full ms
 [100.00-1500.00] MS
 Apotteri_HDX

Apotteri_HDX #1281 RT: 7.93 AV: 1 NL: 2.27E7
 T: FTMS + p ESI Full ms [100.00-1500.00]



Apotteri_HDX #1281 RT: 7.93 AV: 1 NL: 1.03E6
 T: FTMS + p ESI Full ms [100.00-1500.00]

