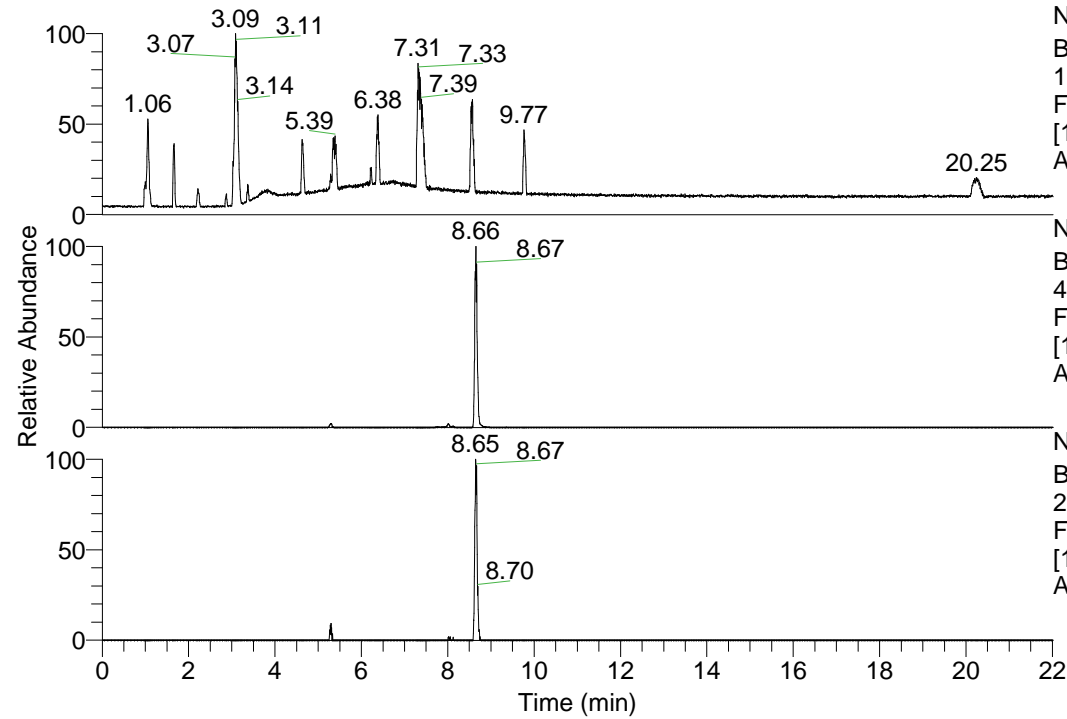


RT: 0.00 - 22.01



NL: 1.69E8
 Base Peak m/z=
 100.00000-1500.00000 F:
 FTMS + p ESI Full ms
 [100.00-1500.00] MS
 Apotteri_HDX

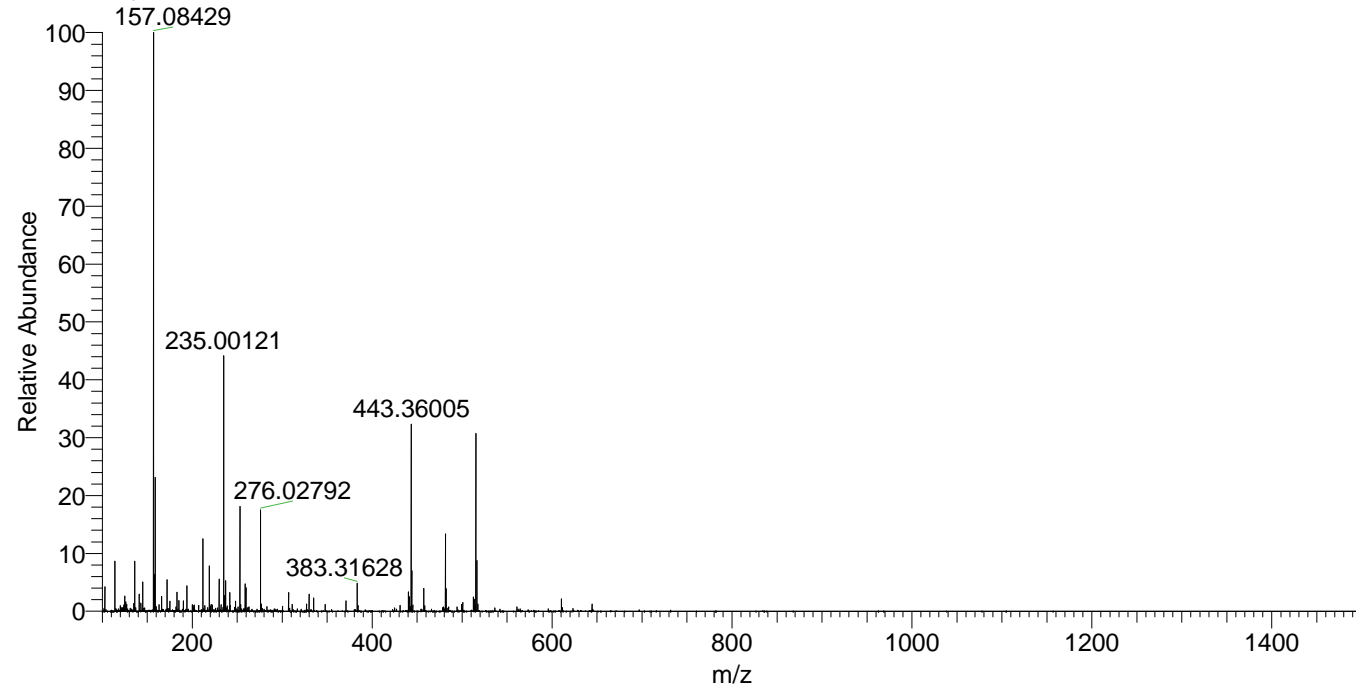
Apotteri_HDX#1404 RT: 8.66
 T: FTMS + p ESI Full ms [100.00-1500.00]
 m/z= 443.00000-444.00000

m/z	Intensity	Relative	Delta (ppm)	Composition
443.36005	6024716.5	100.00	1.06	C ₂₂ H ₃₃ ² H ₇ O ₃ N ₆
			-2.44	C ₂₂ H ₃₅ ² H ₆ O ₃ N ₆
			4.55	C ₂₂ H ₃₁ ² H ₈ O ₃ N ₆

NL: 8.70E6
 Base Peak m/z=
 443.35636-443.36080 F:
 FTMS + p ESI Full ms
 [100.00-1500.00] MS
 Apotteri_HDX

NL: 2.53E5
 Base Peak m/z=
 222.68523-222.68745 F:
 FTMS + p ESI Full ms
 [100.00-1500.00] MS
 Apotteri_HDX

Apotteri_HDX #1404 RT: 8.66 AV: 1 NL: 1.86E7
 T: FTMS + p ESI Full ms [100.00-1500.00]



Apotteri_HDX #1404 RT: 8.66 AV: 1 NL: 6.02E6
 T: FTMS + p ESI Full ms [100.00-1500.00]

