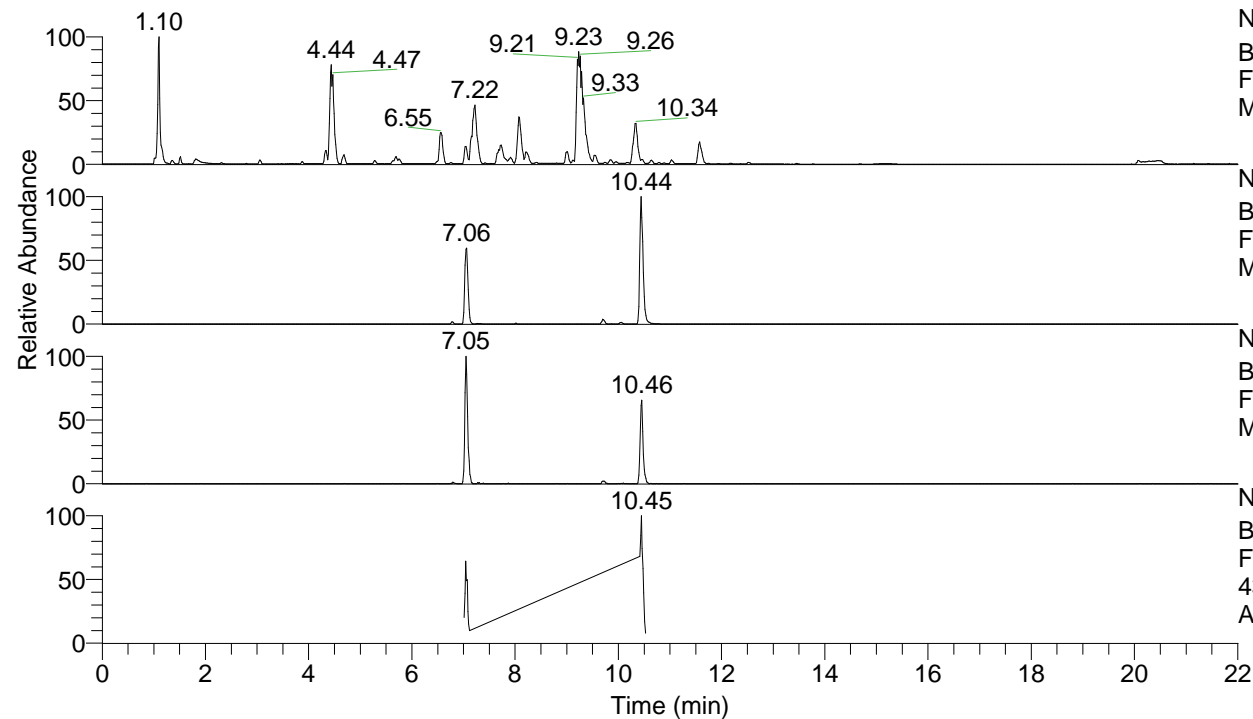


RT: 0.00 - 22.00



NL: 1.25E8
 Base Peak m/z= 100.00000-1500.00000 F:
 FTMS + p ESI Full ms [100.00-1500.00]
 MS Apotteri

NL: 3.66E6
 Base Peak m/z= 435.30618-435.31054 F:
 FTMS + p ESI Full ms [100.00-1500.00]
 MS Apotteri

NL: 4.00E5
 Base Peak m/z= 218.15700-218.15918 F:
 FTMS + p ESI Full ms [100.00-1500.00]
 MS Apotteri

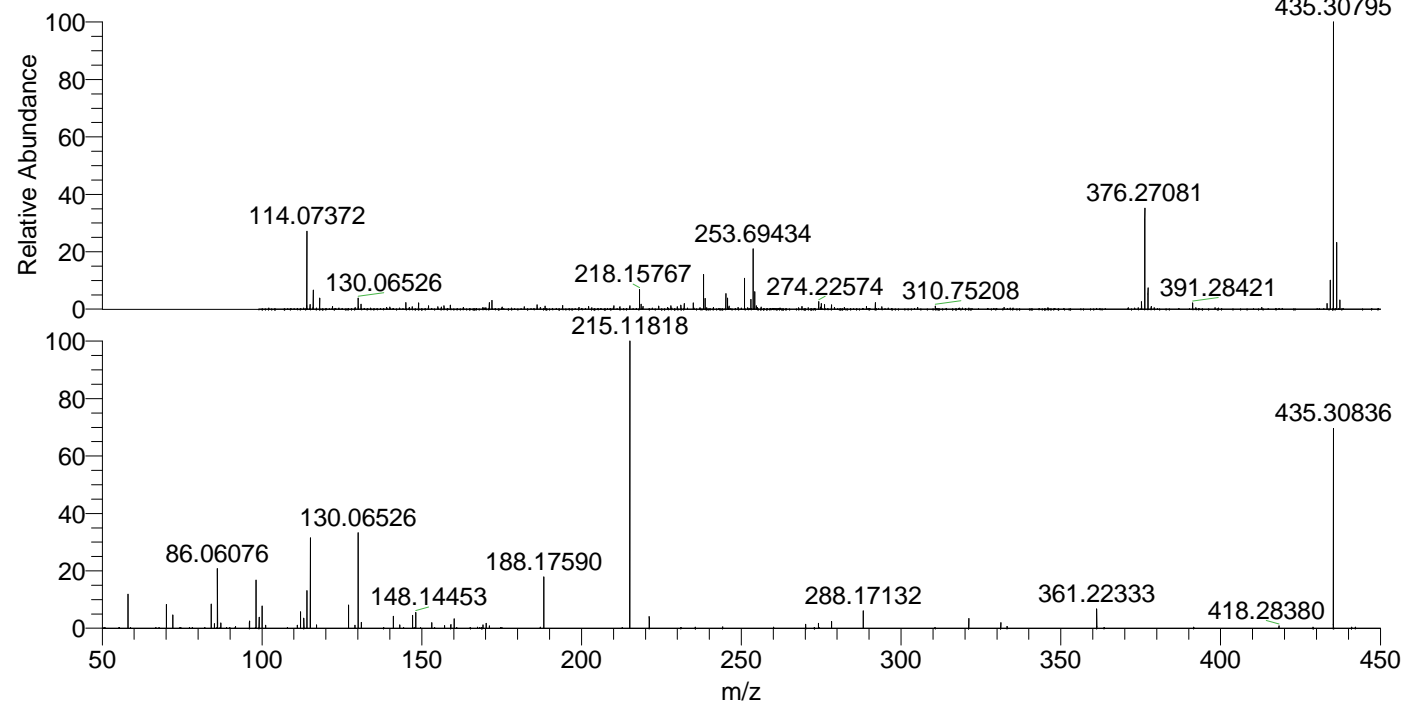
NL: 3.73E5
 Base Peak m/z= 50.00000-1500.00000 F:
 FTMS + p ESI d Full ms2
 435.31@hcd35.00 [50.00-460.00] MS
 Apotteri

Apotteri#4192-4215 RT: 10.42-10.48

F: FTMS + p ESI d Full ms2 435.31 ...

m/z= 50.00000-1000.00000

m/z	Intensity	Relative
58.06606	33139.7	12.06
70.06599	23071.6	8.40
72.08161	12657.2	4.61
84.08146	23257.1	8.46
85.07678	4557.5	1.66
86.06076	58698.2	21.36
87.09241	5104.5	1.86
91.75207	1793.3	0.65
96.08140	7192.9	2.62
98.09694	47286.9	17.21
99.09230	10515.5	3.83
100.07632	21143.7	7.69
101.10795	2901.4	1.06
111.09220	3071.4	1.12
112.07614	16336.1	5.94
113.10772	9850.1	3.58
114.09174	36693.5	13.35
115.12343	86199.3	31.37
117.10280	3312.3	1.21
127.12340	22650.2	8.24
129.10262	2991.5	1.09
130.06526	92847.4	33.79
131.11817	5762.7	2.10
141.13903	11880.4	4.32
143.11823	3188.4	1.16
147.13700	12492.2	4.55
148.14453	15165.8	5.52
153.13884	5188.7	1.89
157.13323	2617.2	0.95
159.09185	3350.5	1.22
160.14460	9099.8	3.31
169.13380	3316.9	1.21
170.16562	4708.8	1.71
171.14898	2264.6	0.82
188.17590	49724.4	18.09
215.11818	274816.1	100.00
221.19794	10988.4	4.00
270.16075	3747.9	1.36
274.15606	4815.4	1.75
278.25503	6500.8	2.37
288.17132	16473.7	5.99
321.19248	9200.8	3.35
331.21376	5488.0	2.00
333.19295	1677.7	0.61
361.22333	19155.5	6.97
418.28380	2205.2	0.80
435.30836	193038.5	70.24



NL: 3.59E6
 Apotteri#4201 RT: 10.44
 AV: 1 T: FTMS + p ESI
 Full ms [100.00-1500.00]

NL: 2.72E5
 Apotteri#4192-4216 RT:
 10.42-10.48 AV: 5 F:
 FTMS + p ESI d Full ms2
 435.31@hcd35.00
 [50.00-460.00]