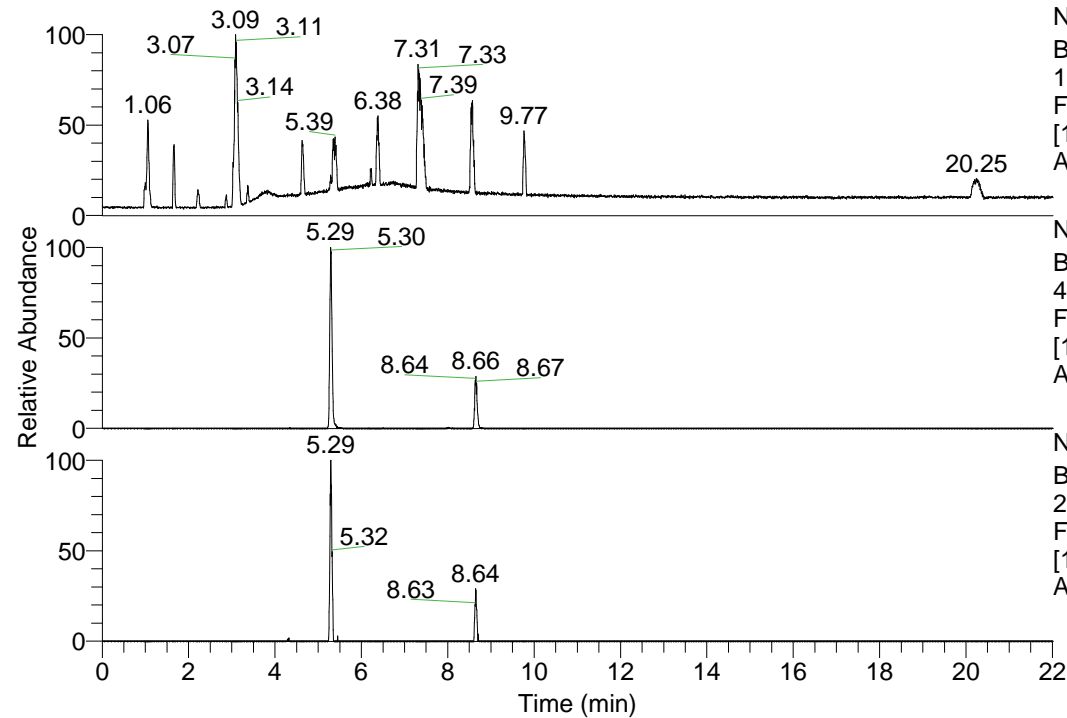


RT: 0.00 - 22.01



NL: 1.69E8  
 Base Peak m/z=  
 100.00000-1500.00000 F:  
 FTMS + p ESI Full ms  
 [100.00-1500.00] MS  
 Apotteri\_HDX

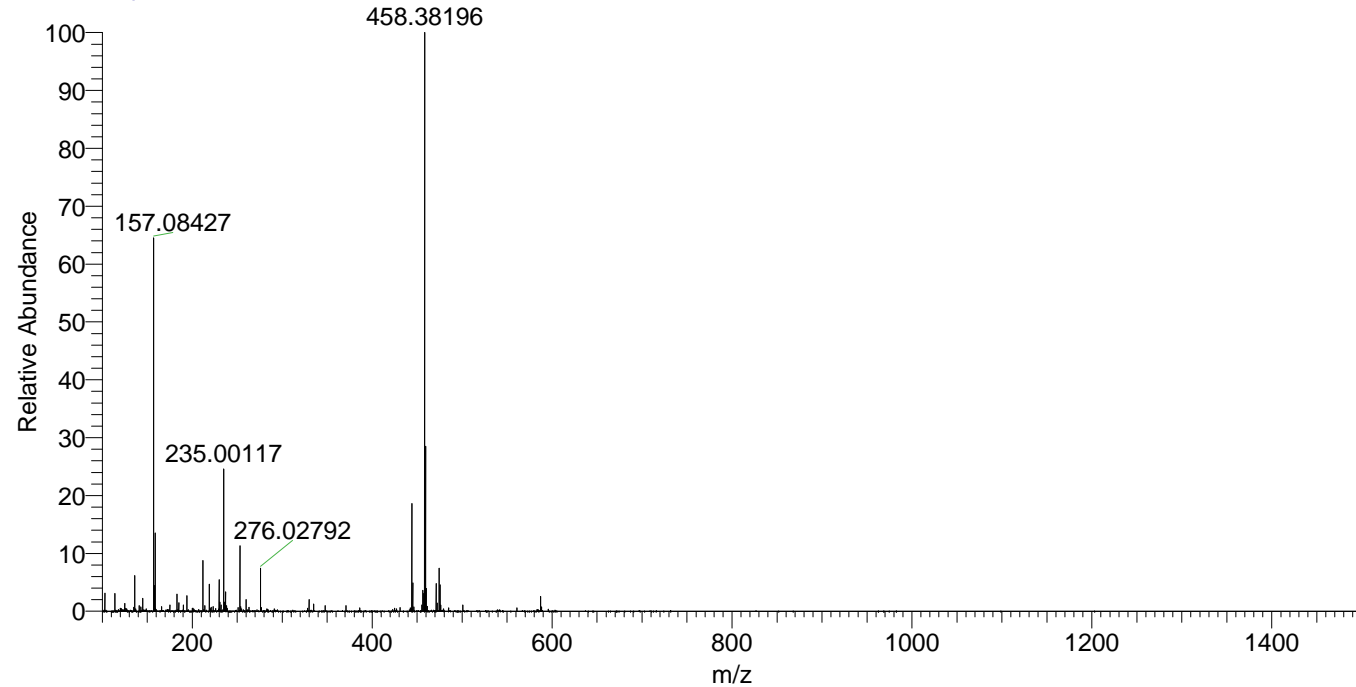
NL: 7.07E6  
 Base Peak m/z=  
 444.36264-444.36708 F:  
 FTMS + p ESI Full ms  
 [100.00-1500.00] MS  
 Apotteri\_HDX

NL: 2.93E5  
 Base Peak m/z=  
 223.18836-223.19060 F:  
 FTMS + p ESI Full ms  
 [100.00-1500.00] MS  
 Apotteri\_HDX

Apotteri\_HDX#834 RT: 5.29  
 T: FTMS + p ESI Full ms [100.00-1500.00]  
 m/z = 444.00000-445.00000

m/z	Intensity	Relative	Delta (ppm)	Composition
444.36646	7066839.0	100.00	1.35	C <sub>22</sub> H <sub>32</sub> <sup>2</sup> H <sub>8</sub> O <sub>3</sub> N <sub>6</sub>
			-2.13	C <sub>22</sub> H <sub>34</sub> <sup>2</sup> H <sub>7</sub> O <sub>3</sub> N <sub>6</sub>
			4.84	C <sub>22</sub> H <sub>30</sub> <sup>2</sup> H <sub>9</sub> O <sub>3</sub> N <sub>6</sub>

Apotteri\_HDX #834 RT: 5.29 AV: 1 NL: 3.73E7  
 T: FTMS + p ESI Full ms [100.00-1500.00]



Apotteri\_HDX #834 RT: 5.29 AV: 1 NL: 6.93E6  
 T: FTMS + p ESI Full ms [100.00-1500.00]

