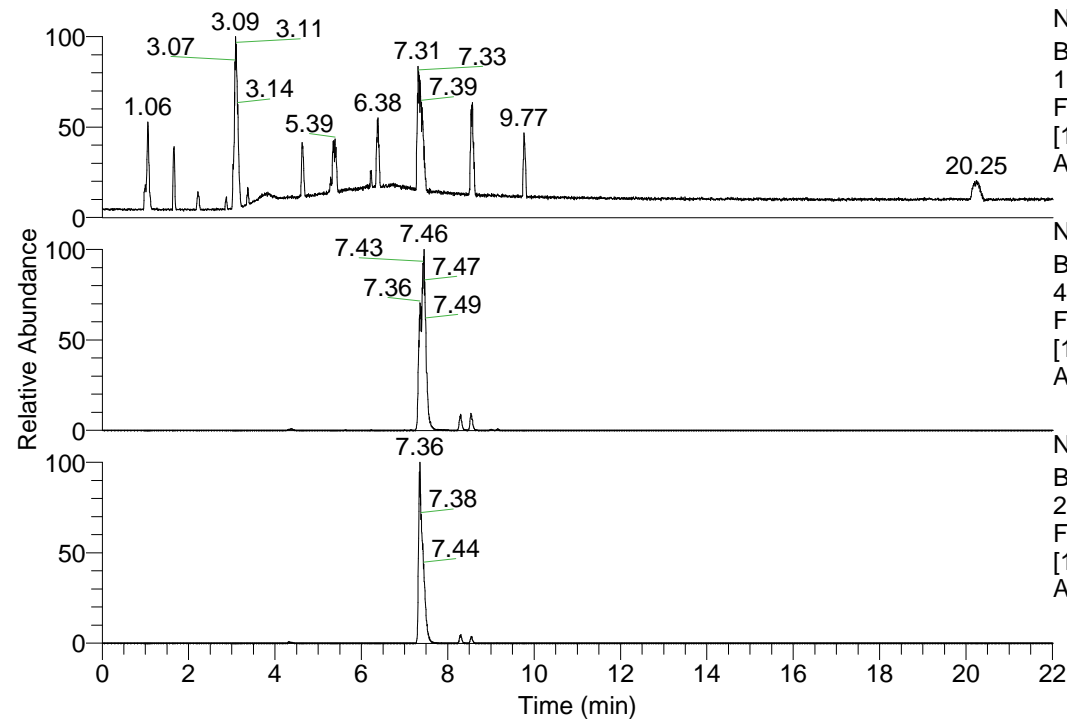


RT: 0.00 - 22.01



NL: 1.69E8
 Base Peak m/z=
 100.00000-1500.00000 F:
 FTMS + p ESI Full ms
 [100.00-1500.00] MS
 Apotteri_HDX

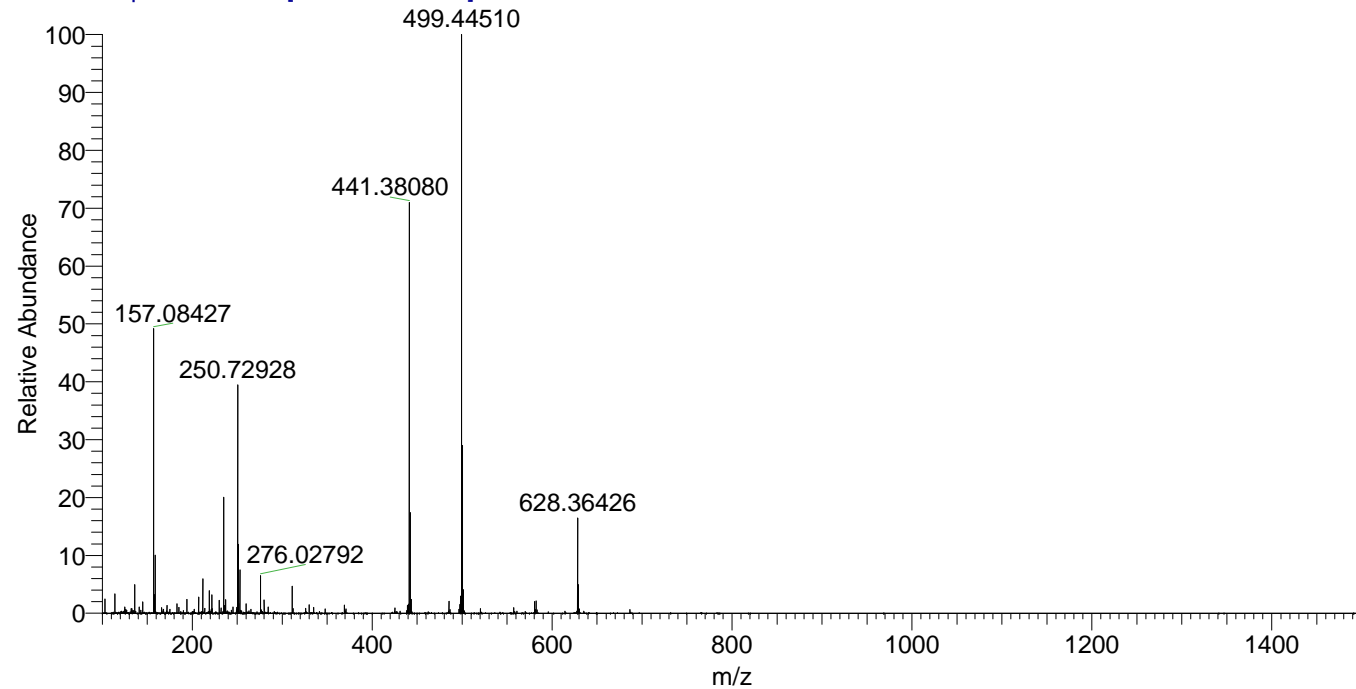
Apotteri_HDX#1202 RT: 7.46
 T: FTMS + p ESI Full ms [100.00-1500.00]
 m/z = 441.00000-442.00000

m/z	Intensity	Relative	Delta (ppm)	Composition
441.38080	32681608.0	100.00	1.10	C ₂₃ H ₃₅ ² H ₇ O ₂ N ₆
			-2.41	C ₂₃ H ₃₇ ² H ₆ O ₂ N ₆
			4.61	C ₂₃ H ₃₃ ² H ₈ O ₂ N ₆

NL: 4.37E7
 Base Peak m/z=
 441.37711-441.38153 F:
 FTMS + p ESI Full ms
 [100.00-1500.00] MS
 Apotteri_HDX

NL: 4.36E6
 Base Peak m/z=
 221.69560-221.69782 F:
 FTMS + p ESI Full ms
 [100.00-1500.00] MS
 Apotteri_HDX

Apotteri_HDX #1202 RT: 7.46 AV: 1 NL: 4.60E7
 T: FTMS + p ESI Full ms [100.00-1500.00]



Apotteri_HDX #1202 RT: 7.46 AV: 1 NL: 3.26E7
 T: FTMS + p ESI Full ms [100.00-1500.00]

