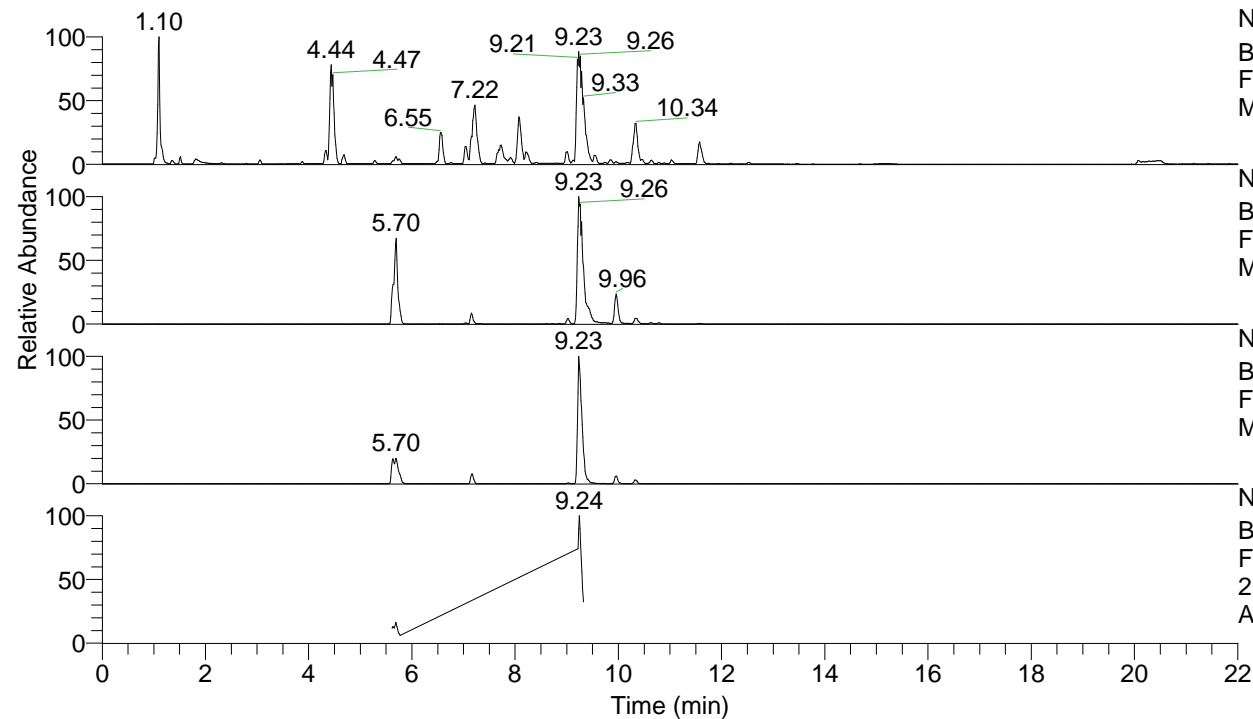


RT: 0.00 - 22.00



NL: 1.25E8
 Base Peak m/z= 100.00000-1500.00000 F:
 FTMS + p ESI Full ms [100.00-1500.00]
 MS Apotteri

NL: 1.15E7
 Base Peak m/z= 433.32693-433.33127 F:
 FTMS + p ESI Full ms [100.00-1500.00]
 MS Apotteri

NL: 3.96E6
 Base Peak m/z= 217.16737-217.16955 F:
 FTMS + p ESI Full ms [100.00-1500.00]
 MS Apotteri

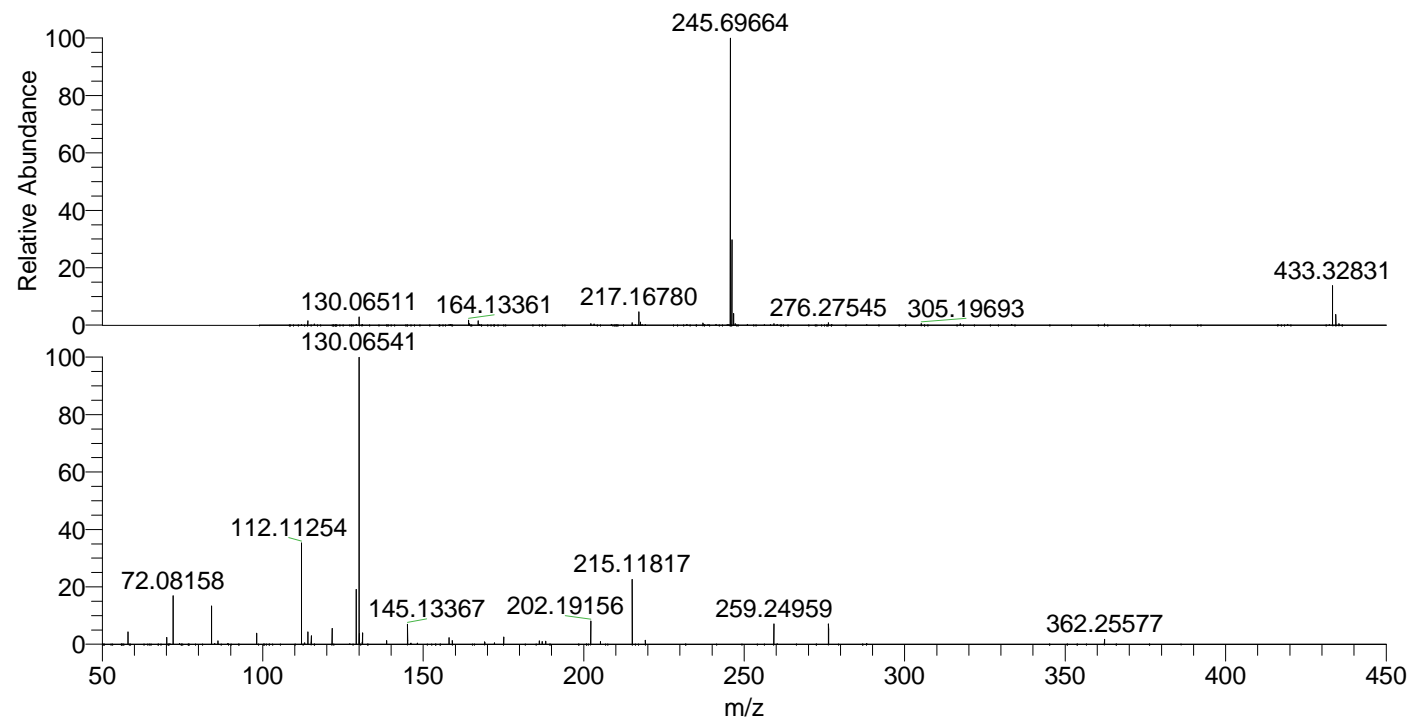
NL: 1.23E6
 Base Peak m/z= 50.00000-1500.00000 F:
 FTMS + p ESI d Full ms2
 217.17@hcd35.00 [50.00-460.00] MS
 Apotteri

Apotteri#3702-3743 RT: 9.22-9.31 AV: 8

F: FTMS + p ESI d Full ms2 217.17 ...

m/z= 50.00000-1000.00000

m/z	Intensity	Relative
58.06601	36697.9	4.31
70.06593	20400.4	2.40
72.08158	142984.1	16.80
84.08145	113751.1	13.37
86.06068	10172.5	1.20
98.09704	32588.9	3.83
112.11254	294739.8	34.64
114.09178	36954.6	4.34
115.12349	25051.8	2.94
121.61531	46575.6	5.47
129.13895	161763.7	19.01
130.06541	850854.8	100.00
130.12846	32188.0	3.78
131.06885	6180.6	0.73
131.11807	33779.5	3.97
138.64171	10786.9	1.27
145.13367	58398.7	6.86
158.06021	20128.1	2.37
159.09195	10762.1	1.26
169.17011	6982.3	0.82
175.06304	20885.8	2.45
186.19686	10343.1	1.22
187.08668	7966.8	0.94
188.17607	8965.5	1.05
202.19156	69310.0	8.15
205.20248	8021.9	0.94
215.11817	188493.6	22.15
219.21843	11850.5	1.39
259.24959	59582.2	7.00
276.27635	59411.0	6.98
362.25577	14906.6	1.75



NL: 8.29E7
 Apotteri#3709 RT: 9.23
 AV: 1 T: FTMS + p ESI
 Full ms [100.00-1500.00]

NL: 8.36E5
 Apotteri#3698-3745 RT:
 9.22-9.31 AV: 8 F: FTMS
 + p ESI d Full ms2
 217.17@hcd35.00
 [50.00-460.00]