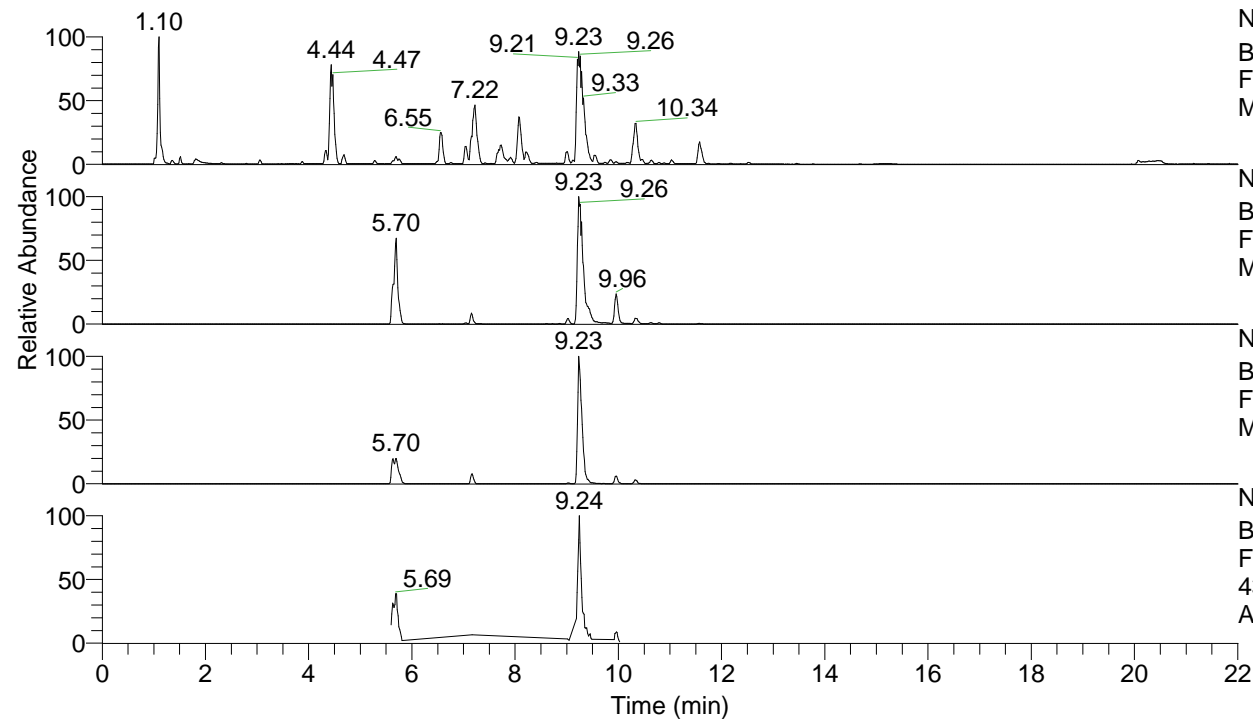


RT: 0.00 - 22.00



NL: 1.25E8
 Base Peak m/z= 100.00000-1500.00000 F:
 FTMS + p ESI Full ms [100.00-1500.00]
 MS Apotteri

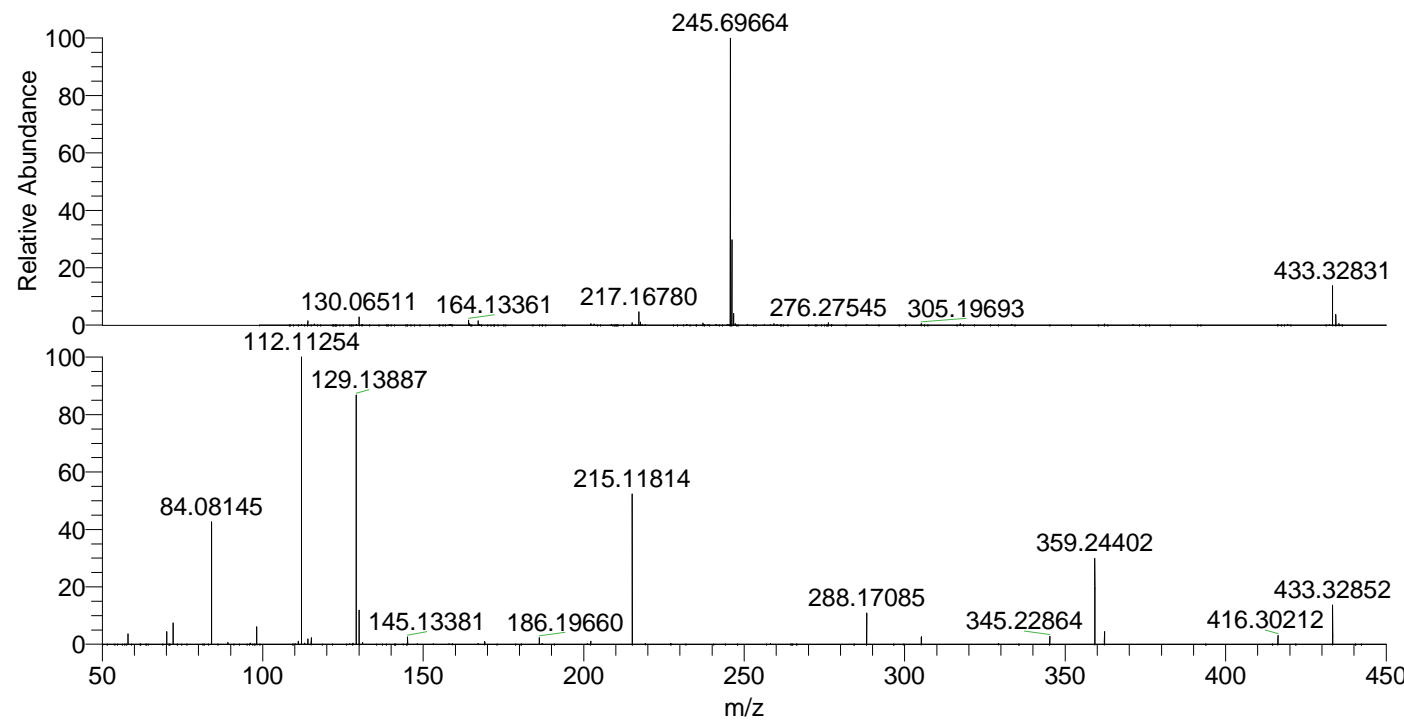
NL: 1.15E7
 Base Peak m/z= 433.32693-433.33127 F:
 FTMS + p ESI Full ms [100.00-1500.00]
 MS Apotteri

NL: 3.96E6
 Base Peak m/z= 217.16737-217.16955 F:
 FTMS + p ESI Full ms [100.00-1500.00]
 MS Apotteri

NL: 1.81E6
 Base Peak m/z= 50.00000-1500.00000 F:
 FTMS + p ESI d Full ms2
 433.33@hcd35.00 [50.00-460.00] MS
 Apotteri

Apotteri#3694-3730 RT: 9.20-9.28 AV: 7
 F: FTMS + p ESI d Full ms2 433.33@h ...
 m/z= 50.00000-1000.00000

| m/z | Intensity | Relative |
|-----------|-----------|----------|
| 58.06601 | 42427.2 | 3.71 |
| 70.06590 | 49998.2 | 4.37 |
| 72.08159 | 85101.8 | 7.45 |
| 84.08145 | 493015.6 | 43.13 |
| 89.10800 | 7327.6 | 0.64 |
| 98.09701 | 70287.1 | 6.15 |
| 111.10473 | 12696.9 | 1.11 |
| 112.11254 | 1143053.5 | 100.00 |
| 114.09188 | 21203.4 | 1.85 |
| 115.12342 | 26000.8 | 2.27 |
| 129.13887 | 1020106.4 | 89.24 |
| 130.06526 | 139593.2 | 12.21 |
| 131.11808 | 6430.5 | 0.56 |
| 145.13381 | 28192.2 | 2.47 |
| 169.17047 | 10656.0 | 0.93 |
| 186.19660 | 25744.8 | 2.25 |
| 202.19134 | 11536.2 | 1.01 |
| 215.11814 | 600250.3 | 52.51 |
| 288.17085 | 124977.8 | 10.93 |
| 305.19753 | 30292.0 | 2.65 |
| 345.22864 | 31612.5 | 2.77 |
| 359.24402 | 351586.3 | 30.76 |
| 362.25518 | 51742.4 | 4.53 |
| 416.30212 | 35030.5 | 3.06 |
| 433.32852 | 156637.9 | 13.70 |



NL: 8.29E7
 Apotteri#3709 RT: 9.23
 AV: 1 T: FTMS + p ESI
 Full ms [100.00-1500.00]

NL: 1.14E6
 Apotteri#3691-3735 RT:
 9.20-9.28 AV: 7 F: FTMS
 + p ESI d Full ms2
 433.33@hcd35.00
 [50.00-460.00]