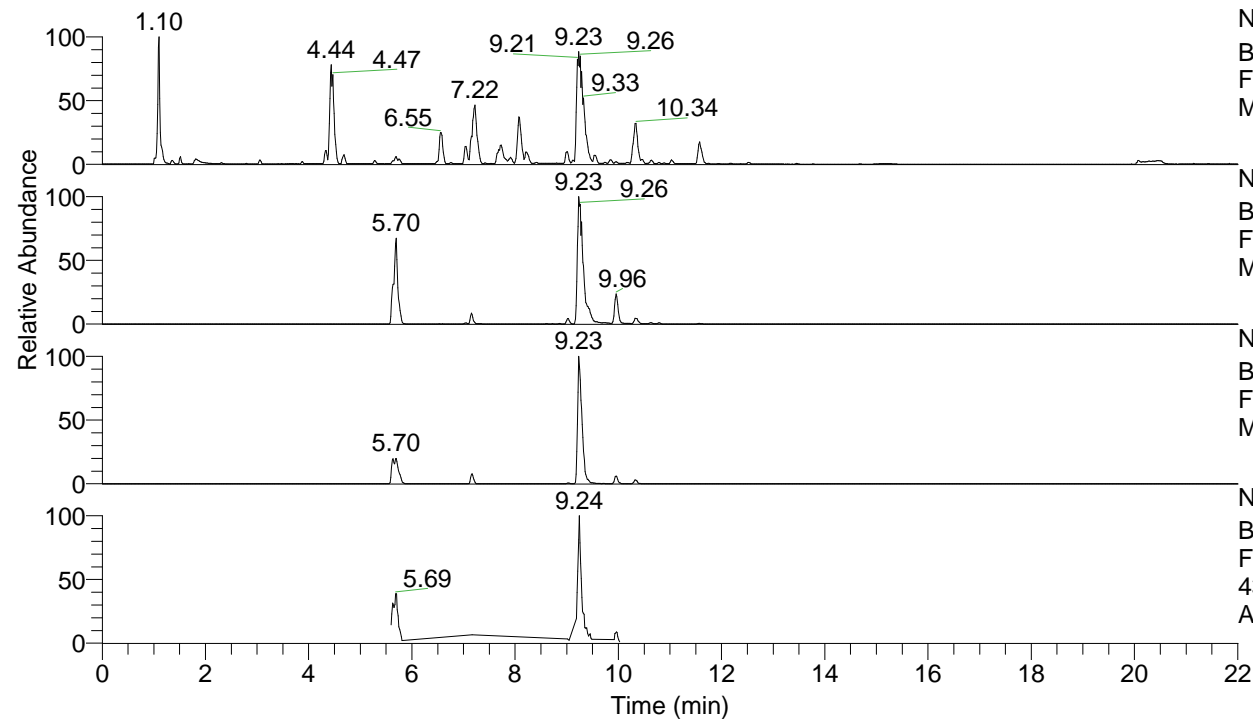


RT: 0.00 - 22.00



NL: 1.25E8
 Base Peak m/z= 100.00000-1500.00000 F:
 FTMS + p ESI Full ms [100.00-1500.00]
 MS Apotteri

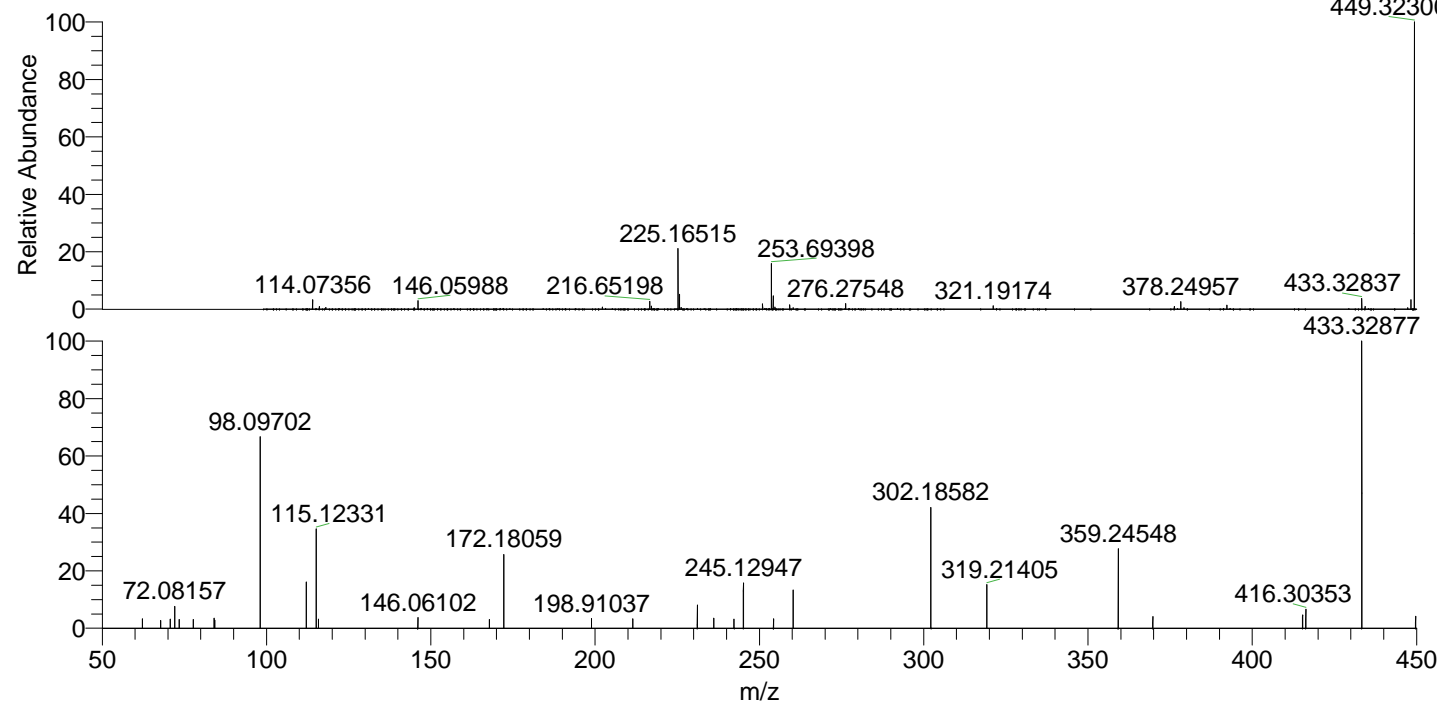
NL: 1.15E7
 Base Peak m/z= 433.32693-433.33127 F:
 FTMS + p ESI Full ms [100.00-1500.00]
 MS Apotteri

NL: 3.96E6
 Base Peak m/z= 217.16737-217.16955 F:
 FTMS + p ESI Full ms [100.00-1500.00]
 MS Apotteri

NL: 1.81E6
 Base Peak m/z= 50.00000-1500.00000 F:
 FTMS + p ESI d Full ms2
 433.33@hcd35.00 [50.00-460.00] MS
 Apotteri

Apotteri#2874 RT: 7.16
 F: FTMS + p ESI d Full ms2 433.33 ...
 m/z= 50.00000-1000.00000

m/z	Intensity	Relative
62.26513	4132.4	3.41
67.81261	3361.6	2.77
70.71415	4049.1	3.34
72.08157	9272.3	7.65
73.42865	3768.4	3.11
77.68600	3756.8	3.10
84.08157	4366.3	3.60
84.21575	3494.4	2.88
98.09702	81400.6	67.12
112.11259	20660.1	17.04
115.12331	44845.0	36.98
115.81484	3842.4	3.17
146.06102	4556.5	3.76
167.84042	3736.8	3.08
172.18059	32365.8	26.69
198.91037	4092.3	3.37
211.46504	3945.8	3.25
231.11247	10290.8	8.49
236.09648	4304.8	3.55
242.29271	3834.4	3.16
245.12947	19135.6	15.78
254.29901	4052.3	3.34
260.27988	16939.6	13.97
302.18582	51242.9	42.25
319.21405	18686.4	15.41
359.24548	34111.8	28.13
369.73965	5065.4	4.18
415.32199	5659.5	4.67
416.30353	8046.5	6.63
433.32877	121279.8	100.00
449.72183	5104.0	4.21



449.32300 NL: 2.69E7
 Apotteri#2869 RT:
 7.15 AV: 1 T: FTMS +
 p ESI Full ms
 [100.00-1500.00]

NL: 1.21E5
 Apotteri#2852 RT:
 7.16 AV: 1 F: FTMS +
 p ESI d Full ms2
 433.33@hcd35.00
 [50.00-460.00]