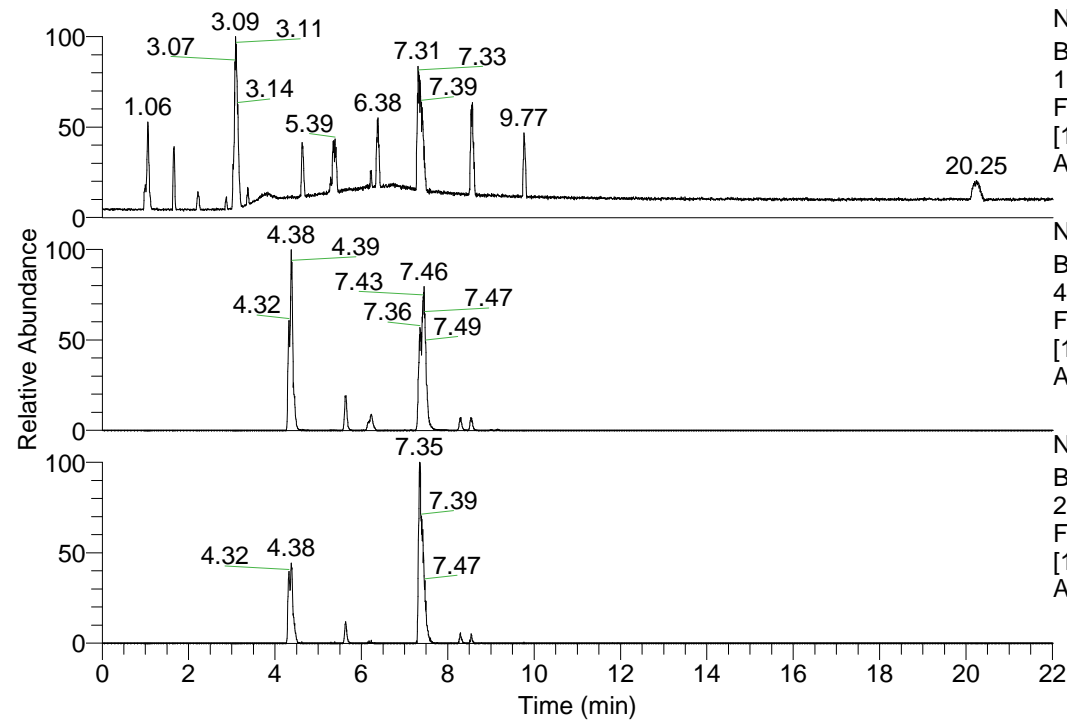


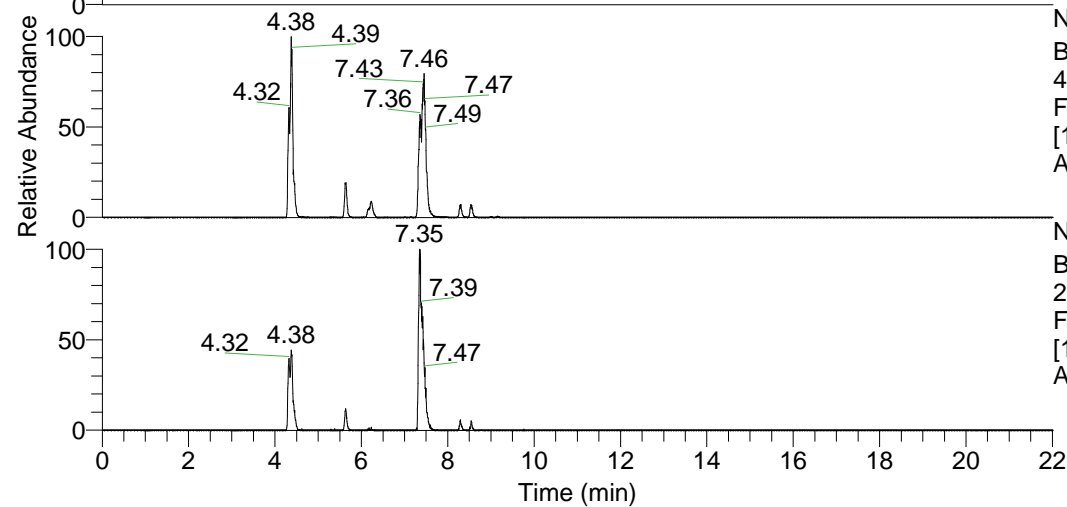
RT: 0.00 - 22.01



NL: 1.69E8
 Base Peak m/z=
 100.00000-1500.00000 F:
 FTMS + p ESI Full ms
 [100.00-1500.00] MS
 Apotteri_HDX

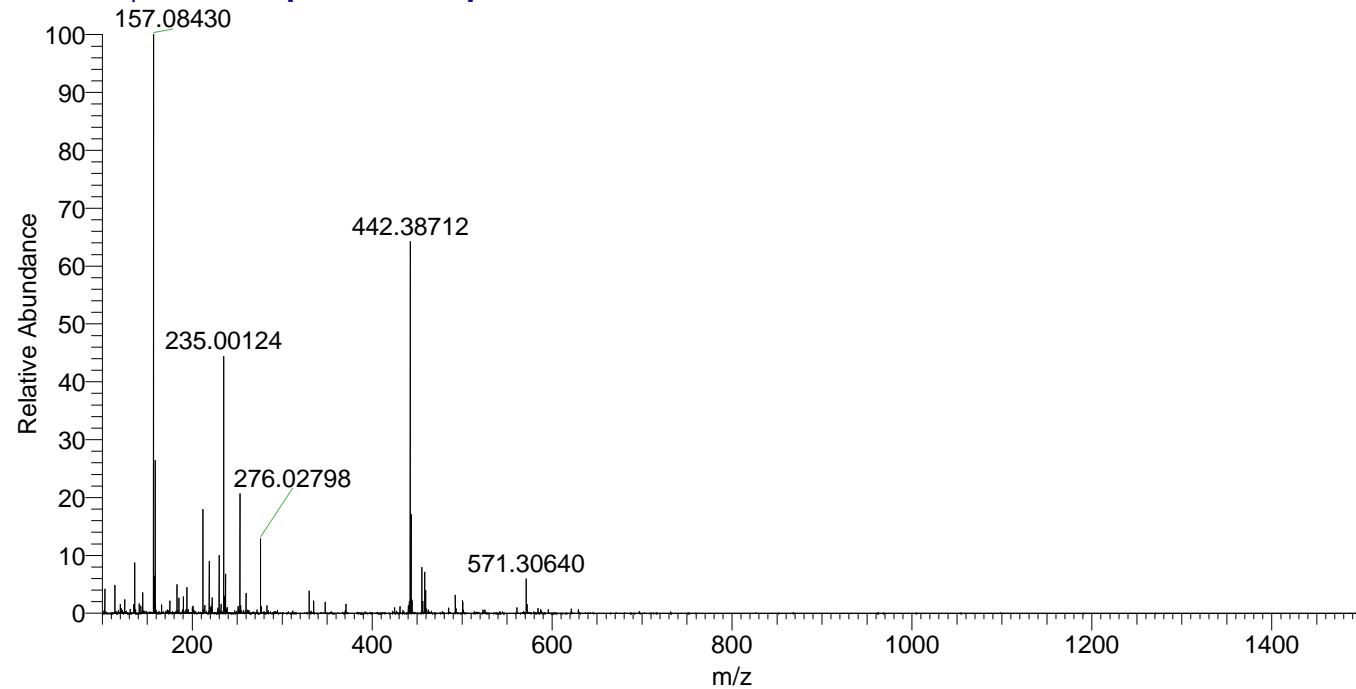
Apotteri_HDX#685 RT: 4.38
 T: FTMS + p ESI Full ms [100.00-1500.00]
 m/z= 442.00000-443.00000

m/z	Intensity	Relative	Delta (ppm)	Composition
442.38712	11360067.0	100.00	1.19	C ₂₃ H ₃₄ ² H ₈ O ₂ N ₆
			-2.31	C ₂₃ H ₃₆ ² H ₇ O ₂ N ₆
			4.69	C ₂₃ H ₃₂ ² H ₉ O ₂ N ₆



NL: 1.36E7
 Base Peak m/z=
 442.38338-442.38780 F:
 FTMS + p ESI Full ms
 [100.00-1500.00] MS
 Apotteri_HDX

Apotteri_HDX #685 RT: 4.38 AV: 1 NL: 1.74E7
 T: FTMS + p ESI Full ms [100.00-1500.00]



Apotteri_HDX #685 RT: 4.38 AV: 1 NL: 1.12E7
 T: FTMS + p ESI Full ms [100.00-1500.00]

