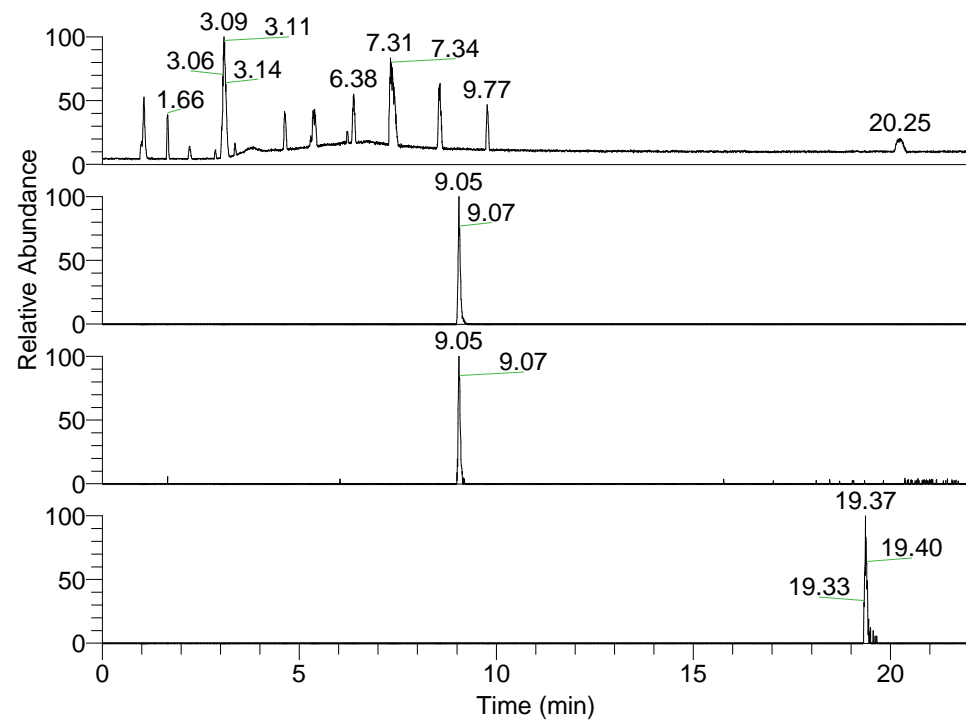


RT: 0.00 - 22.01



NL: 1.69E8  
 Base Peak m/z=  
 100.00000-1500.00000 F: FTMS + p  
 ESI Full ms [100.00-1500.00] MS  
 Apotteri\_HDX

NL: 7.24E5  
 Base Peak m/z=  
 436.35678-436.36114 F: FTMS + p  
 ESI Full ms [100.00-1500.00] MS  
 Apotteri\_HDX

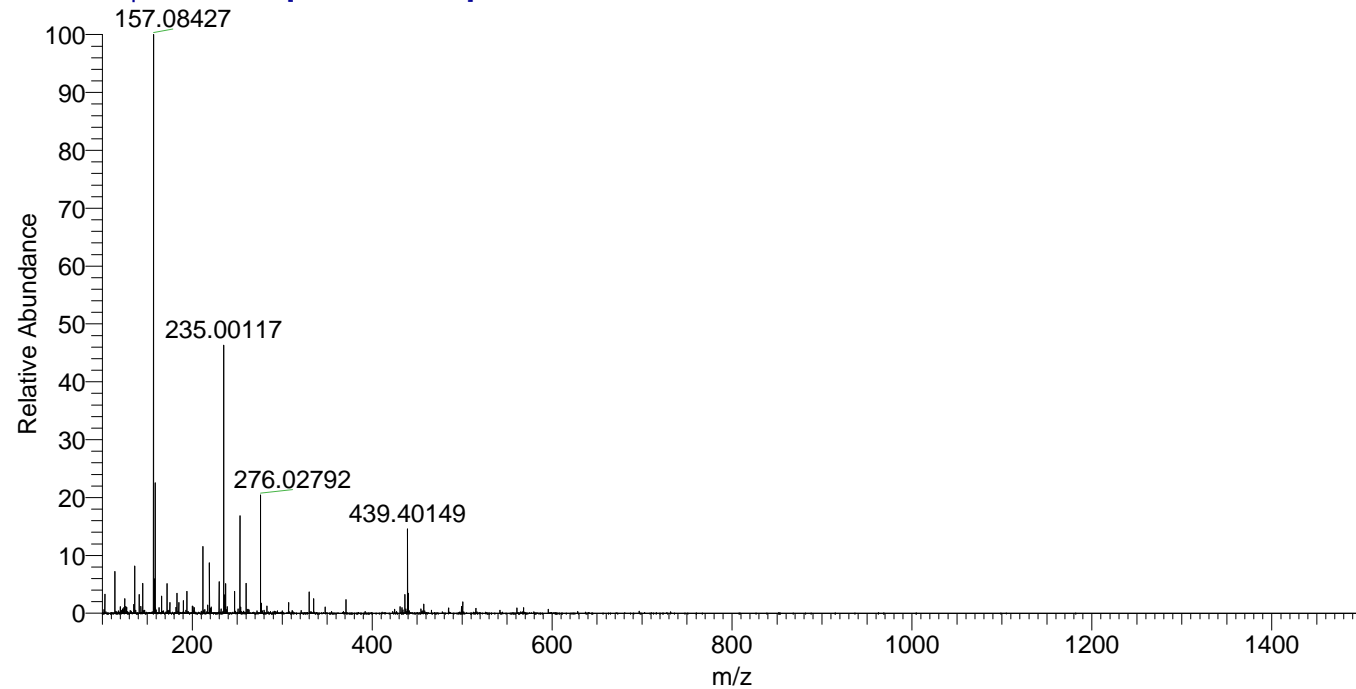
NL: 1.32E5  
 Base Peak m/z=  
 219.18543-219.18763 F: FTMS + p  
 ESI Full ms [100.00-1500.00] MS  
 Apotteri\_HDX

NL: 5.16E4  
 Base Peak m/z=  
 551.35534-551.36086 F: FTMS + p  
 ESI Full ms [100.00-1500.00] MS  
 Apotteri\_HDX

Apotteri\_HDX#1468 RT: 9.05  
 T: FTMS + p ESI Full ms [100.00-1500.00]  
 m/z= 436.00000-437.00000

m/z	Intensity	Relative	Delta (ppm)	Composition
436.36050	723766.8	100.00	1.25	C <sub>24</sub> H <sub>40</sub> <sup>2</sup> H <sub>3</sub> O <sub>2</sub> N <sub>5</sub>
			-2.30	C <sub>24</sub> H <sub>42</sub> <sup>2</sup> H <sub>2</sub> O <sub>2</sub> N <sub>5</sub>
			4.80	C <sub>24</sub> H <sub>38</sub> <sup>2</sup> H <sub>4</sub> O <sub>2</sub> N <sub>5</sub>
			-5.84	C <sub>24</sub> H <sub>44</sub> <sup>2</sup> H <sub>0</sub> O <sub>2</sub> N <sub>5</sub>

Apotteri\_HDX #1468 RT: 9.05 AV: 1 NL: 2.18E7  
 T: FTMS + p ESI Full ms [100.00-1500.00]



Apotteri\_HDX #1468 RT: 9.05 AV: 1 NL: 3.18E6  
 T: FTMS + p ESI Full ms [100.00-1500.00]

