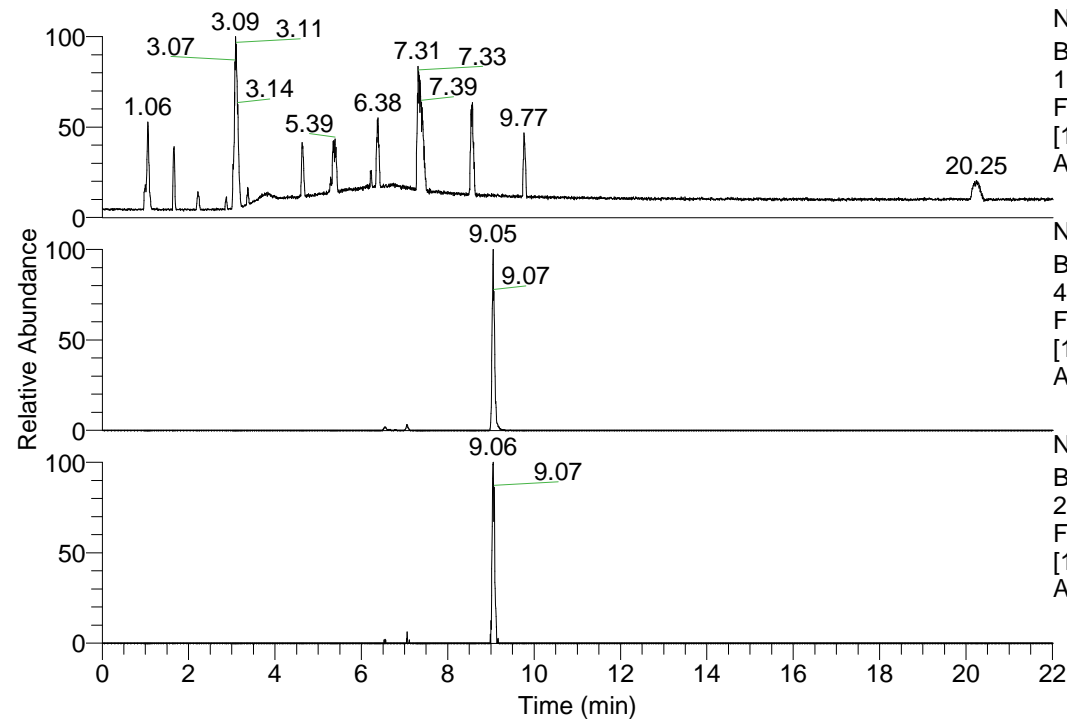


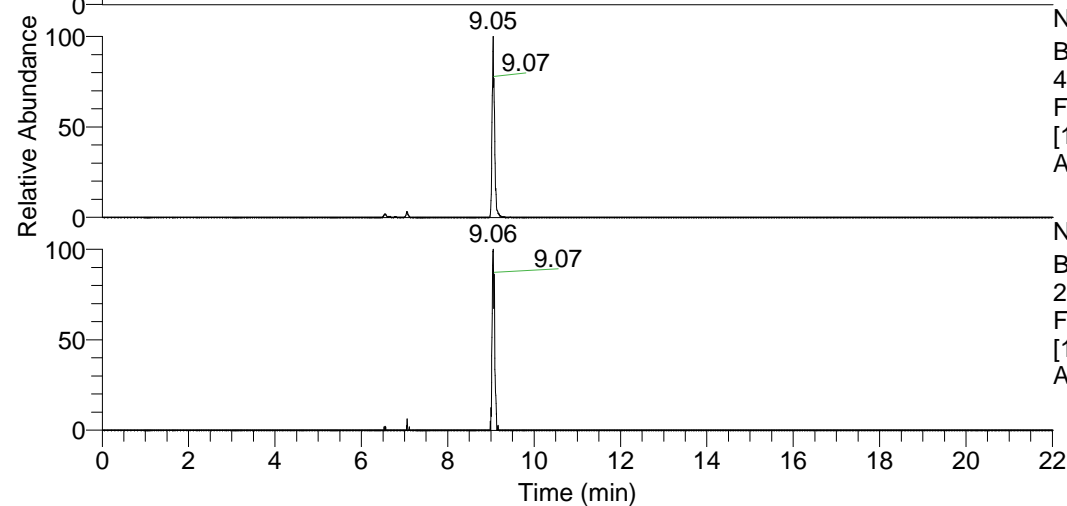
RT: 0.00 - 22.01



NL: 1.69E8
 Base Peak m/z=
 100.00000-1500.00000 F:
 FTMS + p ESI Full ms
 [100.00-1500.00] MS
 Apotteri_HDX

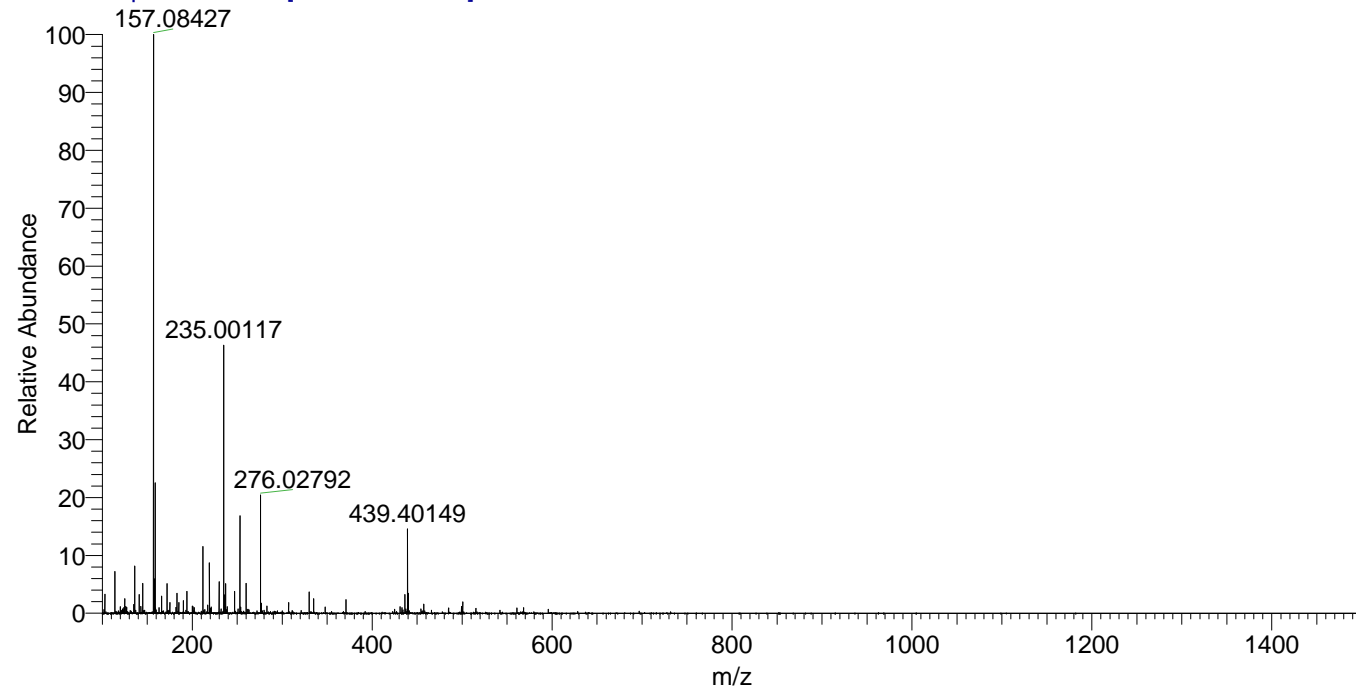
Apotteri_HDX#1468 RT: 9.05
 T: FTMS + p ESI Full ms [100.00-1500.00]
 m/z= 439.00000-440.00000

m/z	Intensity	Relative	Delta (ppm)	Composition
439.40149	3185411.5	100.00	1.00	C ₂₄ H ₃₇ ² H ₇ ON ₆
			-2.52	C ₂₄ H ₃₉ ² H ₆ ON ₆
			4.53	C ₂₄ H ₃₅ ² H ₈ ON ₆



NL: 3.19E6
 Base Peak m/z=
 439.39785-439.40225 F:
 FTMS + p ESI Full ms
 [100.00-1500.00] MS
 Apotteri_HDX

Apotteri_HDX #1468 RT: 9.05 AV: 1 NL: 2.18E7
 T: FTMS + p ESI Full ms [100.00-1500.00]



Apotteri_HDX #1468 RT: 9.05 AV: 1 NL: 3.18E6
 T: FTMS + p ESI Full ms [100.00-1500.00]

