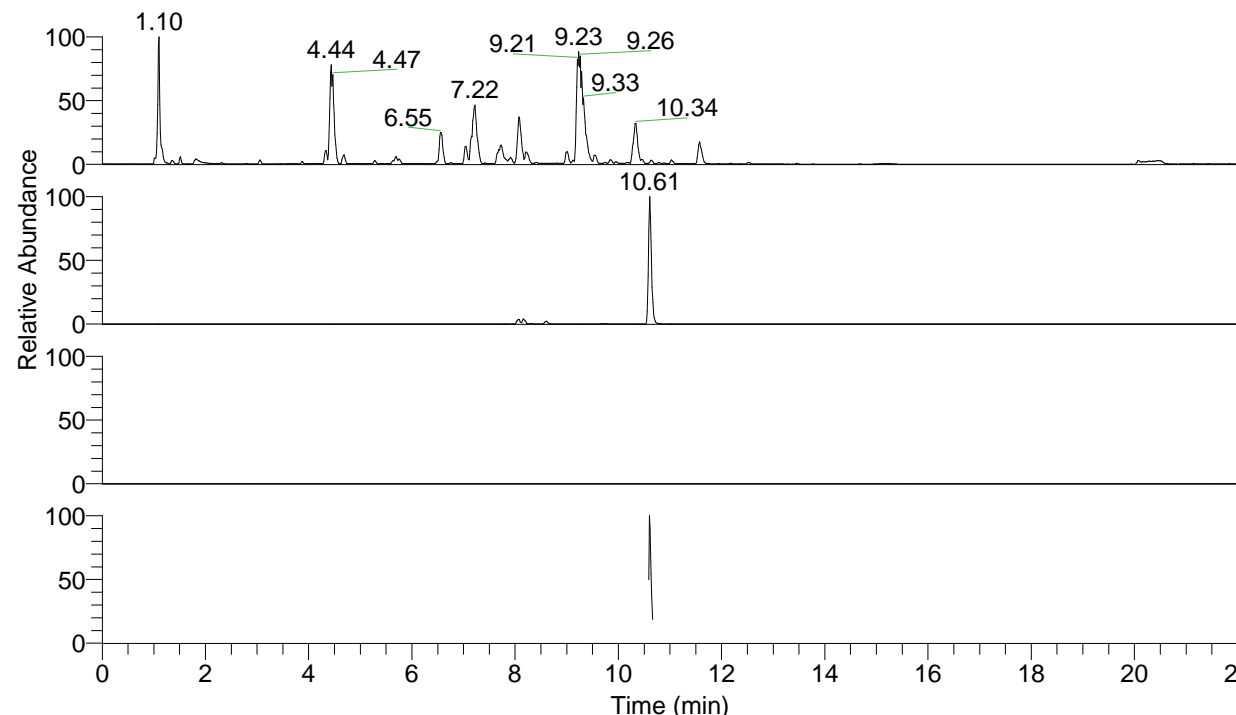


RT: 0.00 - 22.00



NL: 1.25E8  
 Base Peak m/z= 100.00000-1500.00000 F:  
 FTMS + p ESI Full ms [100.00-1500.00]  
 MS Apotteri

NL: 1.50E6  
 Base Peak m/z= 431.34768-431.35200 F:  
 FTMS + p ESI Full ms [100.00-1500.00]  
 MS Apotteri

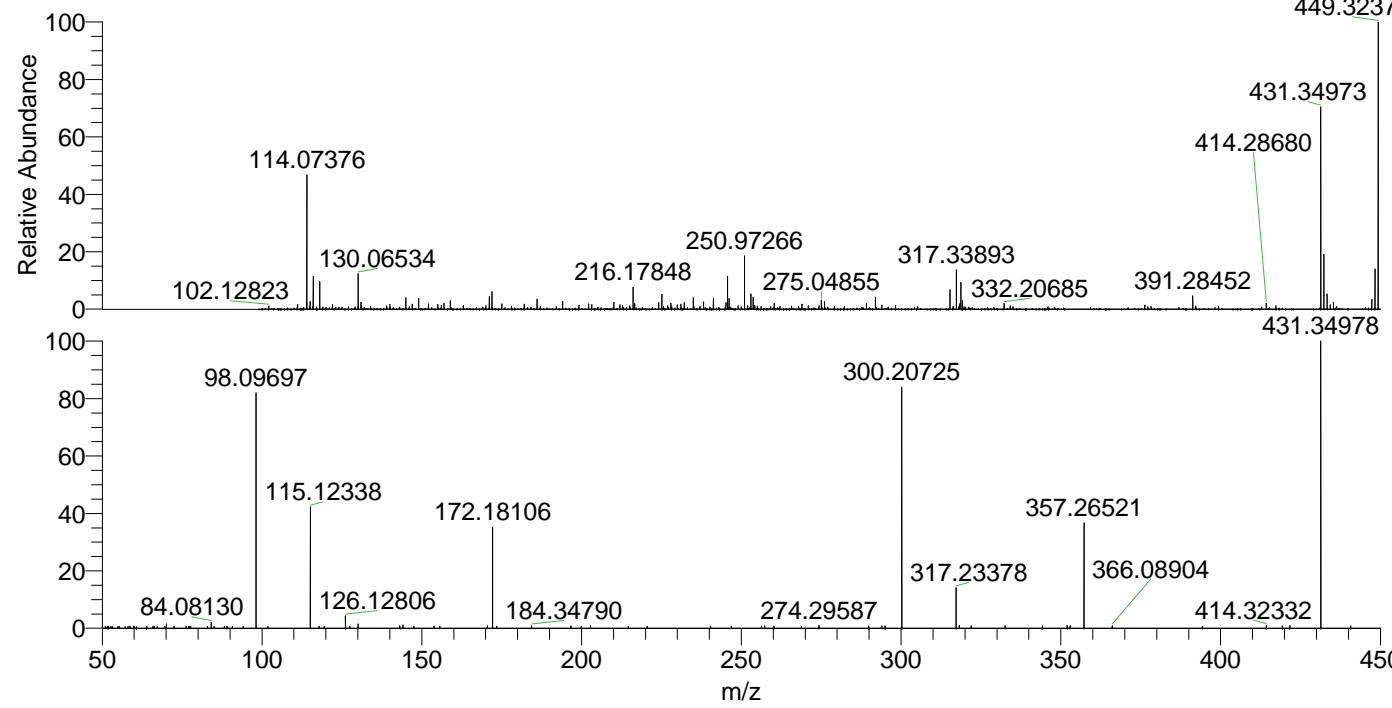
NL: 0  
 Base Peak m/z= 216.18665-216.18881 F:  
 FTMS + p ESI Full ms [100.00-1500.00]  
 MS Apotteri

NL: 1.69E5  
 Base Peak m/z= 50.00000-1500.00000 F:  
 FTMS + p ESI d Full ms2  
 431.35@hcd35.00 [50.00-460.00] MS  
 Apotteri

Apotteri#4259-4281 RT: 10.59-10.64

F: FTMS + p ESI d Full ms2 431.35 ...  
 m/z= 50.00000-1000.00000

m/z	Intensity	Relative
51.90410	782.3	0.72
58.62990	801.6	0.74
59.87086	741.5	0.68
65.83707	750.5	0.69
69.53904	749.0	0.69
70.06589	1603.0	1.48
72.52873	794.6	0.73
84.08130	2192.7	2.02
89.06681	781.4	0.72
90.73252	852.7	0.79
98.09697	92054.1	84.84
98.10281	1077.8	0.99
115.12338	46428.2	42.79
117.89653	778.7	0.72
126.12806	4627.1	4.26
127.48555	842.1	0.78
130.06549	1674.6	1.54
143.15477	966.5	0.89
144.13859	1350.6	1.24
147.53289	832.8	0.77
153.84052	741.1	0.68
155.62815	823.7	0.76
170.52266	949.8	0.88
172.18106	38911.2	35.86
173.45143	773.7	0.71
184.34790	949.6	0.88
196.68601	929.1	0.86
199.91545	808.8	0.75
202.84643	896.7	0.83
220.57897	774.1	0.71
240.40416	797.3	0.73
256.30445	824.6	0.76
257.28614	908.0	0.84
260.17909	854.5	0.79
268.82393	763.4	0.70
274.29587	1073.1	0.99
289.90308	902.8	0.83
293.95264	940.3	0.87
295.01770	889.6	0.82
300.20725	91712.1	84.52
317.23378	15423.7	14.21
318.21147	1009.3	0.93
321.90956	899.1	0.83
332.56607	951.0	0.88
344.22784	885.7	0.82
352.00306	985.5	0.91
352.93219	872.7	0.80
357.26521	40726.3	37.53
366.08904	903.6	0.83
394.30812	841.5	0.78
414.32332	1075.9	0.99
419.31915	923.1	0.85
421.68021	994.5	0.92
431.34978	108507.5	100.00
440.70313	918.8	0.85



NL: 2.05E6  
 Apotteri#4267 RT: 10.61  
 AV: 1 T: FTMS + p ESI  
 Full ms [100.00-1500.00]

NL: 1.08E5  
 Apotteri#4257-4281 RT:  
 10.59-10.64 AV: 5 F:  
 FTMS + p ESI d Full ms2  
 431.35@hcd35.00  
 [50.00-460.00]