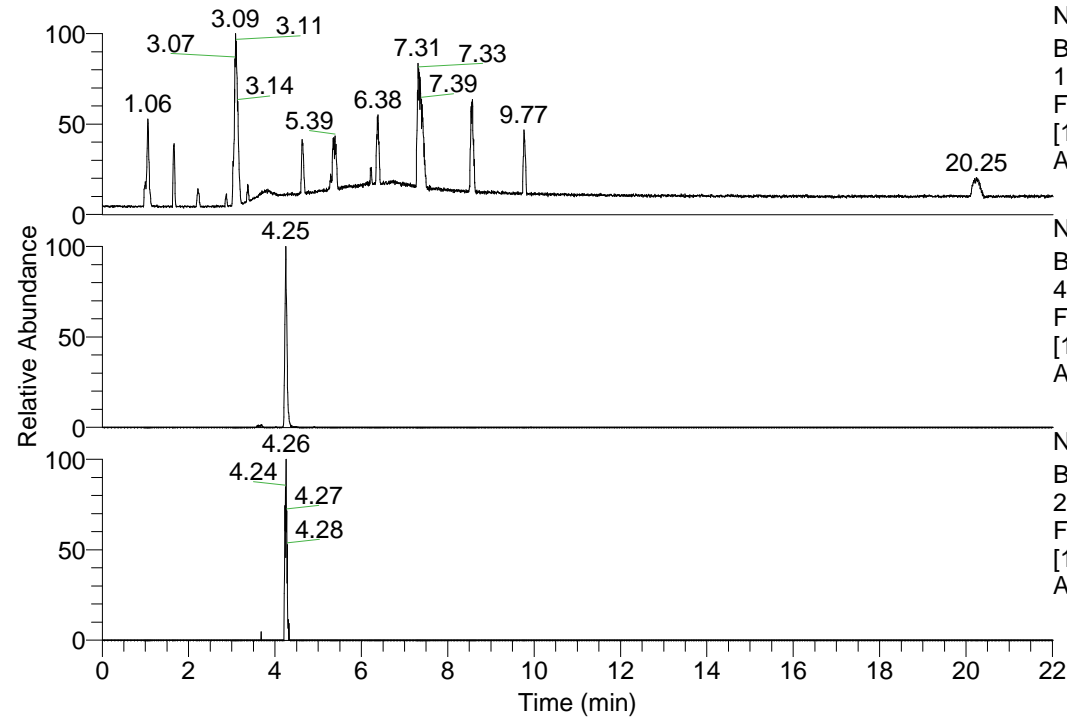


RT: 0.00 - 22.01



NL: 1.69E8
 Base Peak m/z=
 100.00000-1500.00000 F:
 FTMS + p ESI Full ms
 [100.00-1500.00] MS
 Apotteri_HDX

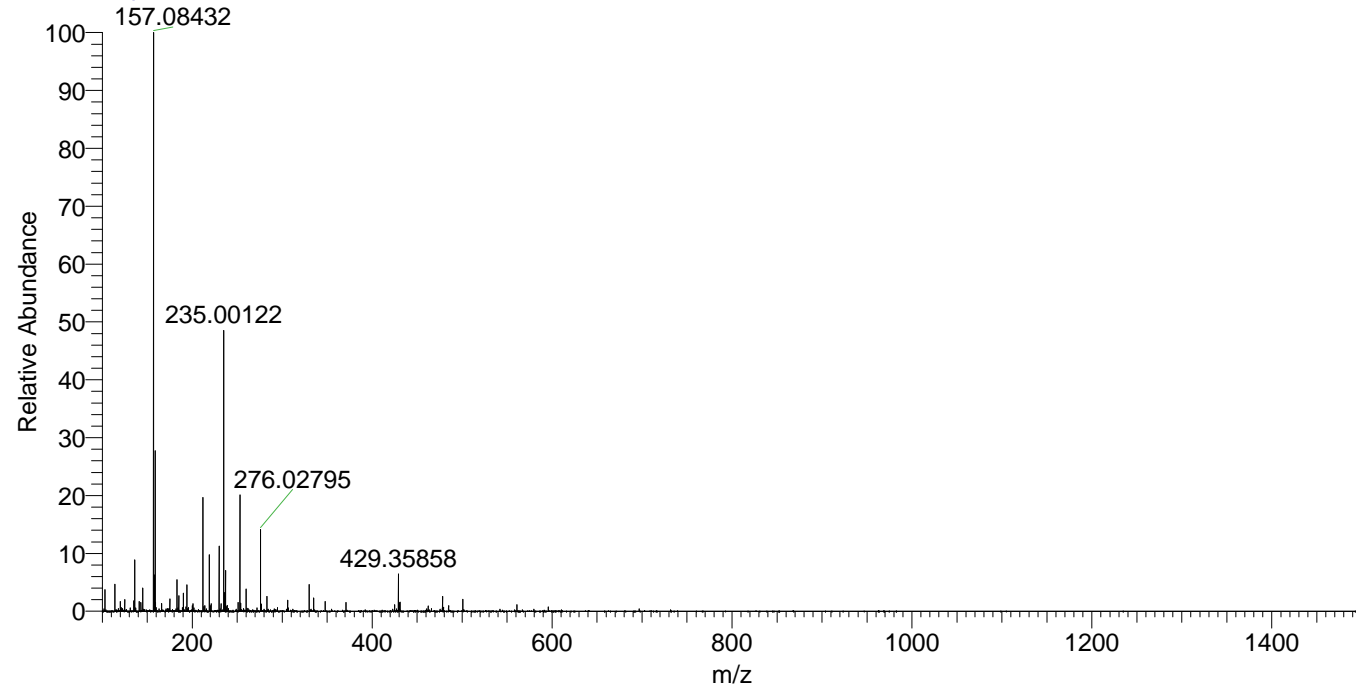
NL: 1.27E6
 Base Peak m/z=
 429.35490-429.35920 F:
 FTMS + p ESI Full ms
 [100.00-1500.00] MS
 Apotteri_HDX

NL: 5.22E4
 Base Peak m/z=
 215.68450-215.68666 F:
 FTMS + p ESI Full ms
 [100.00-1500.00] MS
 Apotteri_HDX

Apotteri_HDX#663 RT: 4.25
 T: FTMS + p ESI Full ms [100.00-1500.00]
 m/z= 429.00000-430.00000

m/z	Intensity	Relative	Delta (ppm)	Composition
429.35858	1184947.8	100.00	1.23	C ₂₂ H ₃₅ ² H ₆ O ₃ N ₅
			-2.37	C ₂₂ H ₃₇ ² H ₅ O ₃ N ₅
			4.84	C ₂₂ H ₃₃ ² H ₇ O ₃ N ₅

Apotteri_HDX #663 RT: 4.25 AV: 1 NL: 1.83E7
 T: FTMS + p ESI Full ms [100.00-1500.00]



Apotteri_HDX #663 RT: 4.25 AV: 1 NL: 1.18E6
 T: FTMS + p ESI Full ms [100.00-1500.00]

