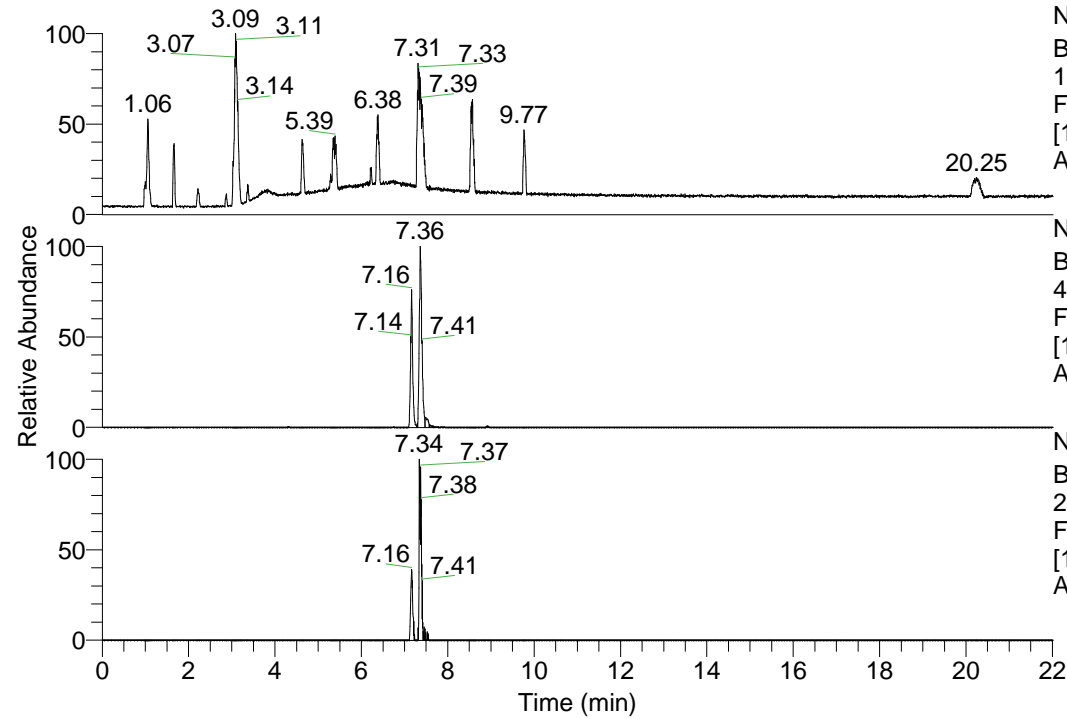


RT: 0.00 - 22.01



NL: 1.69E8
 Base Peak m/z=
 100.00000-1500.00000 F:
 FTMS + p ESI Full ms
 [100.00-1500.00] MS
 Apotteri_HDX

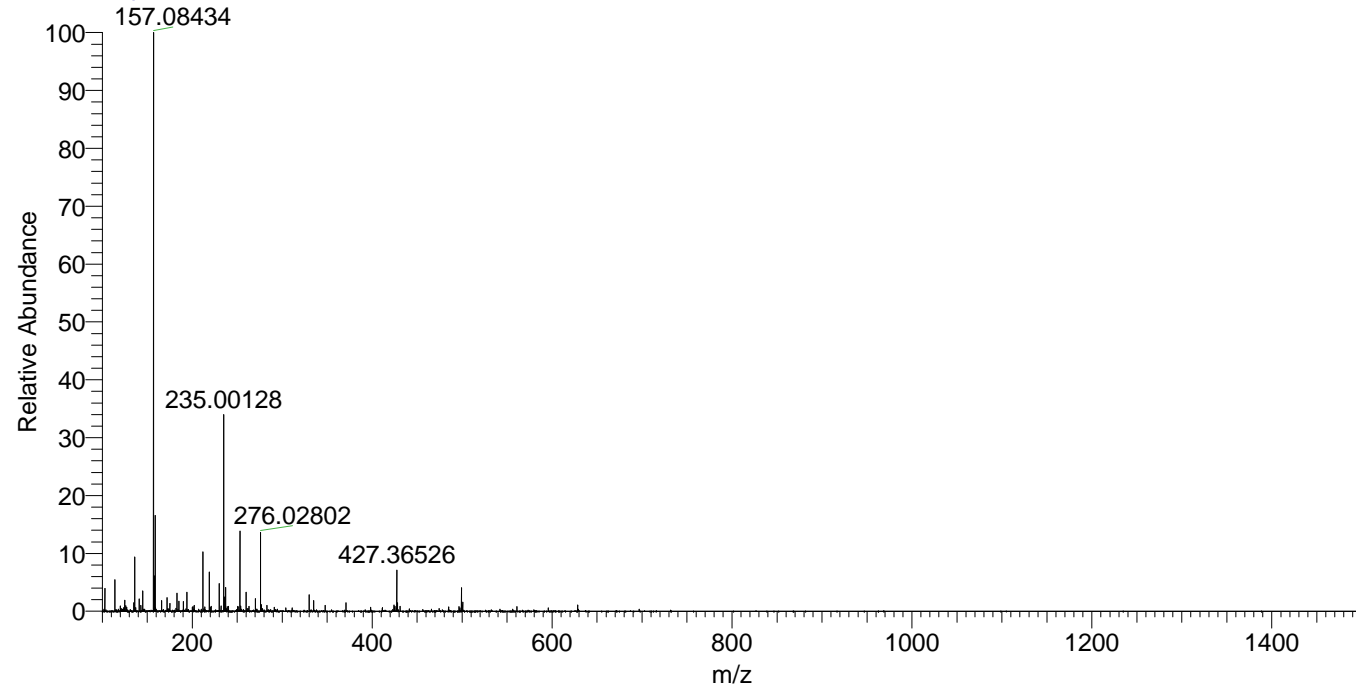
NL: 2.57E6
 Base Peak m/z=
 427.36153-427.36581 F:
 FTMS + p ESI Full ms
 [100.00-1500.00] MS
 Apotteri_HDX

NL: 1.84E5
 Base Peak m/z=
 214.68781-214.68995 F:
 FTMS + p ESI Full ms
 [100.00-1500.00] MS
 Apotteri_HDX

Apotteri_HDX#1149 RT: 7.16
 T: FTMS + p ESI Full ms [100.00-1500.00]
 m/z= 427.00000-428.00000

m/z	Intensity	Relative	Delta (ppm)	Composition
427.36526	1958102.6	100.00	1.41	C ₂₂ H ₃₃ ² H ₇ O ₂ N ₆
			-2.22	C ₂₂ H ₃₅ ² H ₆ O ₂ N ₆
			5.03	C ₂₂ H ₃₁ ² H ₈ O ₂ N ₆
			-5.84	C ₂₂ H ₃₇ ² H ₅ O ₂ N ₆

Apotteri_HDX #1149 RT: 7.16 AV: 1 NL: 2.74E7
 T: FTMS + p ESI Full ms [100.00-1500.00]



Apotteri_HDX #1149 RT: 7.16 AV: 1 NL: 1.95E6
 T: FTMS + p ESI Full ms [100.00-1500.00]

