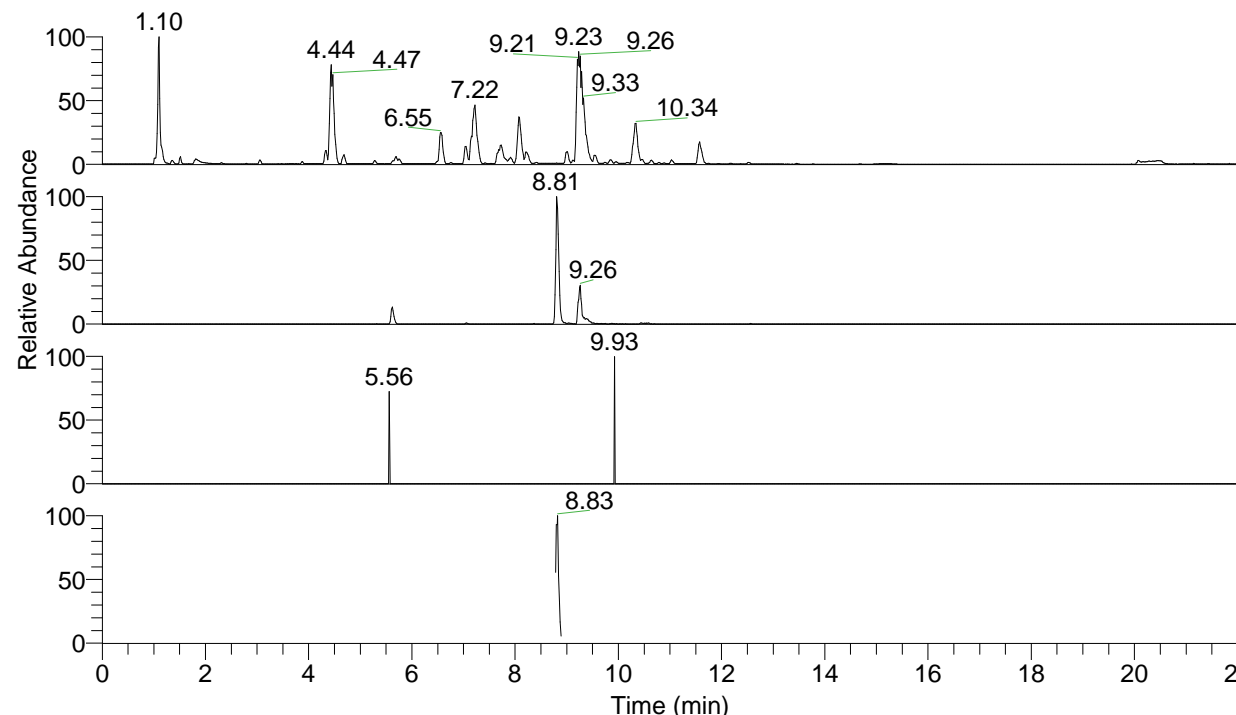


RT: 0.00 - 22.00



NL: 1.25E8
 Base Peak m/z= 100.00000-1500.00000 F:
 FTMS + p ESI Full ms [100.00-1500.00]
 MS Apotteri

NL: 1.27E6
 Base Peak m/z= 419.31135-419.31555 F:
 FTMS + p ESI Full ms [100.00-1500.00]
 MS Apotteri

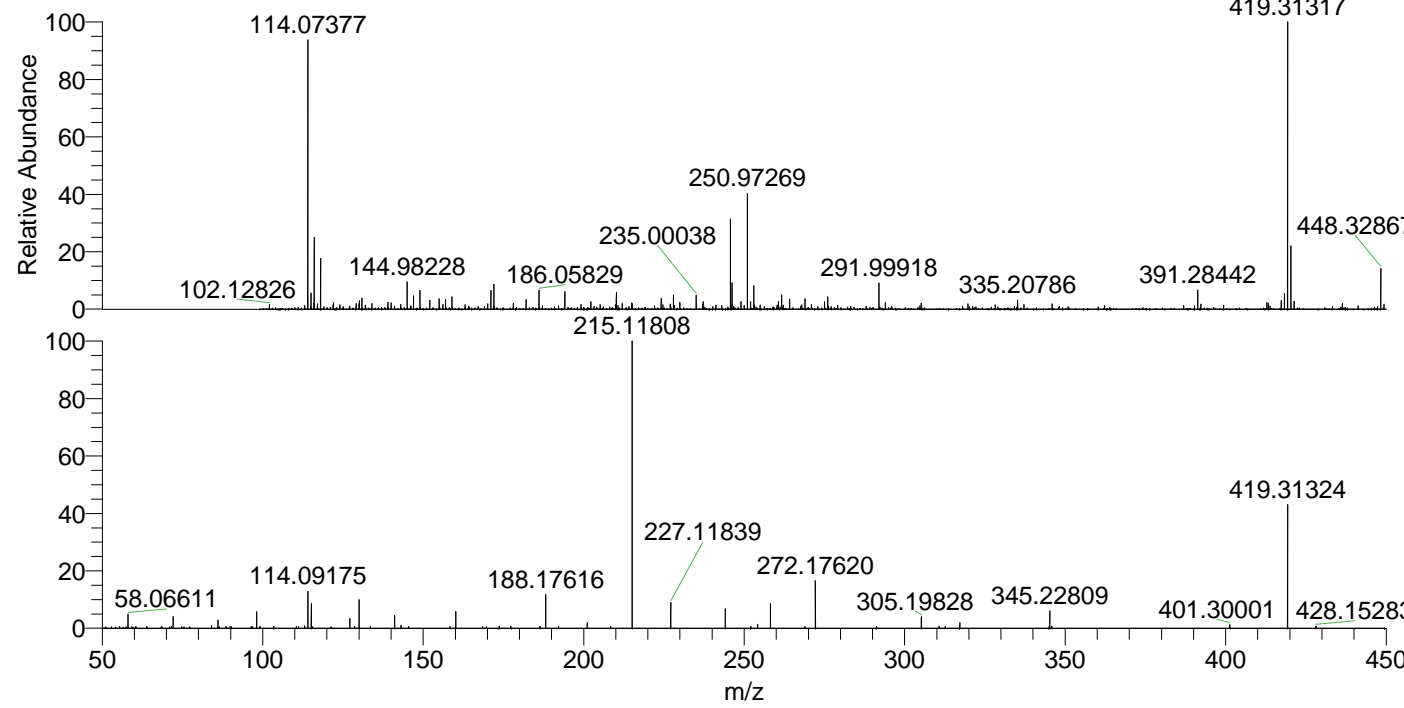
NL: 1.51E3
 Base Peak m/z= 210.16059-210.16269 F:
 FTMS + p ESI Full ms [100.00-1500.00]
 MS Apotteri

NL: 1.64E5
 Base Peak m/z= 50.00000-1500.00000 F:
 FTMS + p ESI d Full ms2
 419.31@hcd35.00 [50.00-445.00] MS
 Apotteri

Apotteri#3528-3555 RT: 8.79-8.86 AV: 6

F: FTMS + p ESI d Full ms2 419.31 ...

m/z	Intensity	Relative
55.44205	614.8	0.55
58.06611	5536.2	4.98
71.59047	822.7	0.74
72.08166	4539.4	4.08
74.80513	591.0	0.53
84.08145	1100.3	0.99
86.06077	3212.4	2.89
88.52191	703.4	0.63
89.81166	678.2	0.61
96.43880	629.0	0.57
98.09710	6395.2	5.75
99.09226	750.3	0.67
103.44901	728.1	0.65
110.45014	625.9	0.56
111.20027	603.0	0.54
113.10802	952.1	0.86
114.09175	14621.1	13.15
115.12364	9482.5	8.53
127.12341	3805.3	3.42
128.66556	629.3	0.57
130.06529	11267.3	10.13
133.50647	671.5	0.60
141.13883	5038.9	4.53
143.11797	1127.1	1.01
145.49386	641.3	0.58
158.33647	675.8	0.61
160.14466	6521.7	5.87
168.53756	663.6	0.60
169.75607	593.0	0.53
173.66774	814.7	0.73
177.33777	773.1	0.70
186.41169	811.4	0.73
188.17616	13022.3	11.71
192.17552	660.3	0.59
201.10297	2224.2	2.00
208.42317	645.4	0.58
215.11808	111177.7	100.00
227.11839	10029.4	9.02
244.14542	7363.5	6.62
252.05645	691.3	0.62
254.16471	1511.1	1.36
258.16011	9652.1	8.68
268.94881	699.4	0.63
272.17620	18448.1	16.59
291.23773	649.1	0.58
305.19828	4505.7	4.05
310.75290	757.4	0.68
312.61080	665.1	0.60
317.19673	2150.3	1.93
345.01741	705.7	0.63
345.22809	6666.4	6.00
345.85112	755.6	0.68
401.30001	1469.4	1.32
419.31324	49144.2	44.20
428.15283	849.7	0.76



NL: 1.25E6
 Apotteri#3535 RT: 8.81
 AV: 1 T: FTMS + p ESI
 Full ms [100.00-1500.00]

NL: 1.10E5
 Apotteri#3525-3556 RT:
 8.79-8.86 AV: 6 F: FTMS
 + p ESI d Full ms2
 419.31@hcd35.00
 [50.00-445.00]