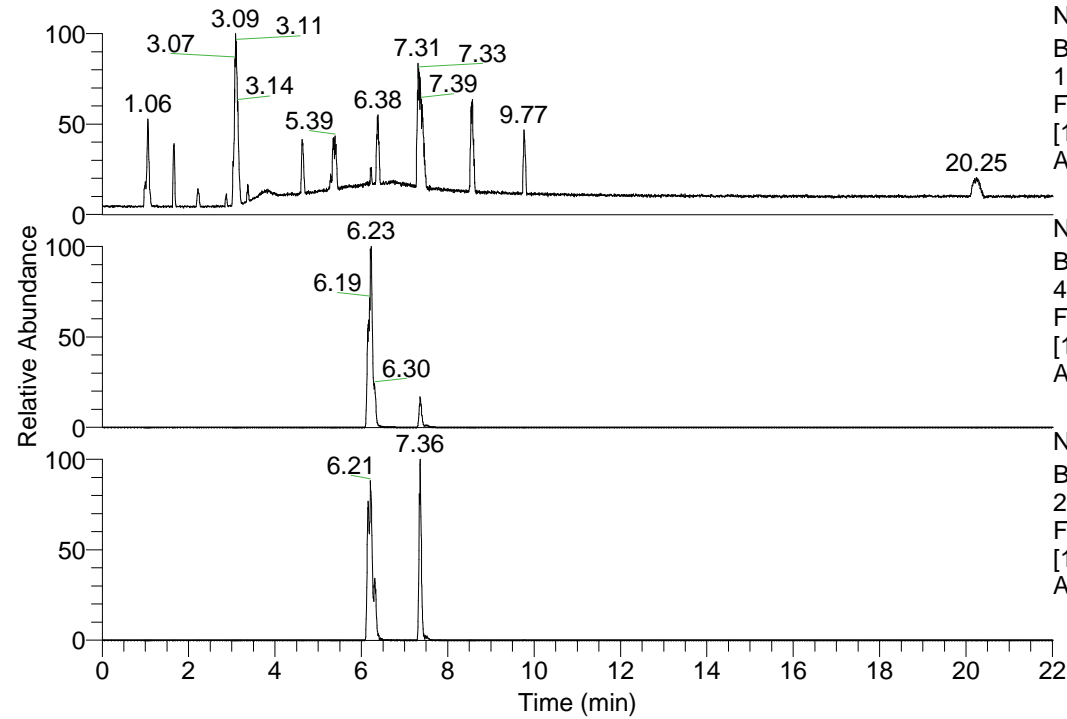


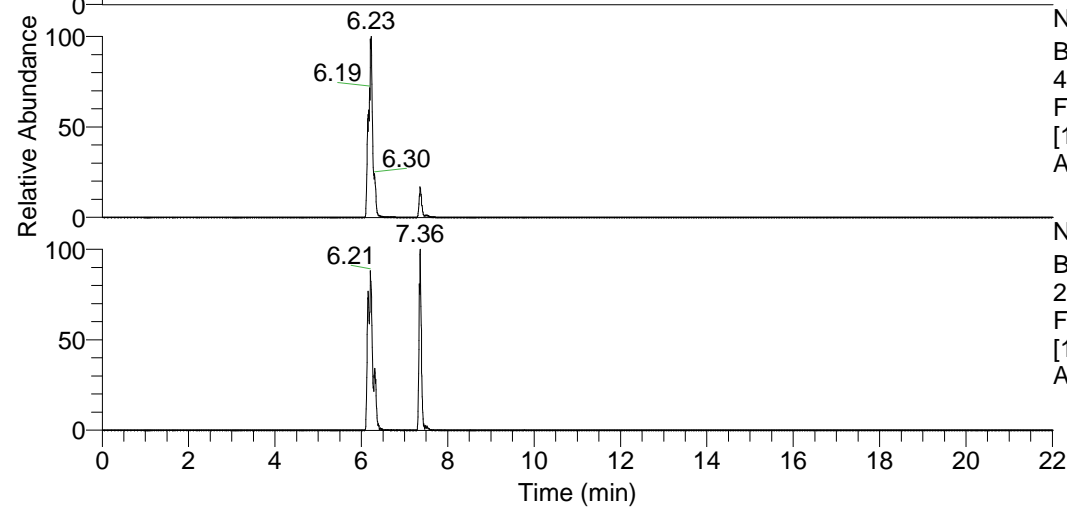
RT: 0.00 - 22.01



NL: 1.69E8
 Base Peak m/z=
 100.00000-1500.00000 F:
 FTMS + p ESI Full ms
 [100.00-1500.00] MS
 Apotteri_HDX

Apotteri_HDX#1183 RT: 7.36
 T: FTMS + p ESI Full ms [100.00-1500.00]
 m/z= 425.00000-426.00000

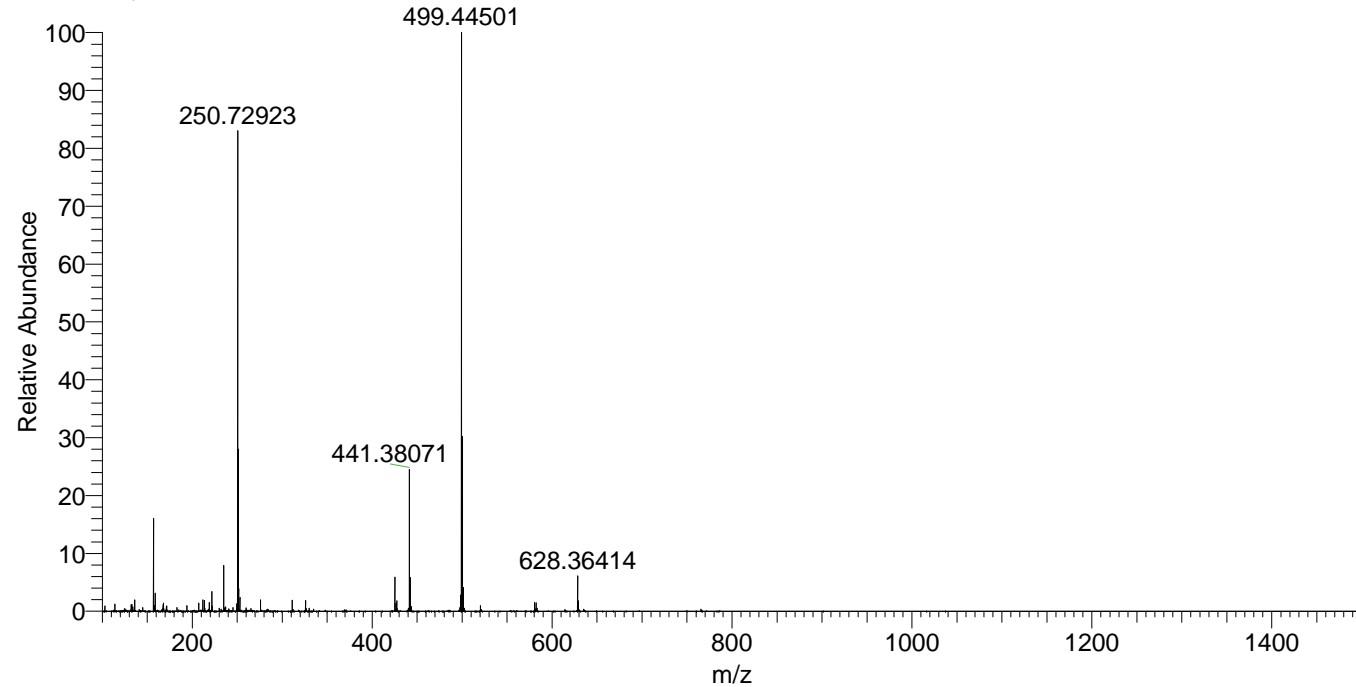
| m/z | Intensity | Relative | Delta (ppm) | Composition |
|-----------|-----------|----------|-------------|---|
| 425.38571 | 7446539.0 | 100.00 | 0.74 | C ₂₃ H ₃₅ ² H ₇ ON ₆ |
| | | | -2.90 | C ₂₃ H ₃₇ ² H ₆ ON ₆ |
| | | | 4.38 | C ₂₃ H ₃₃ ² H ₈ ON ₆ |



NL: 4.39E7
 Base Peak m/z=
 425.38227-425.38653 F:
 FTMS + p ESI Full ms
 [100.00-1500.00] MS
 Apotteri_HDX

NL: 2.43E6
 Base Peak m/z=
 213.69818-213.70032 F:
 FTMS + p ESI Full ms
 [100.00-1500.00] MS
 Apotteri_HDX

Apotteri_HDX #1183 RT: 7.36 AV: 1 NL: 1.25E8
 T: FTMS + p ESI Full ms [100.00-1500.00]



Apotteri_HDX #1183 RT: 7.36 AV: 1 NL: 7.42E6
 T: FTMS + p ESI Full ms [100.00-1500.00]

