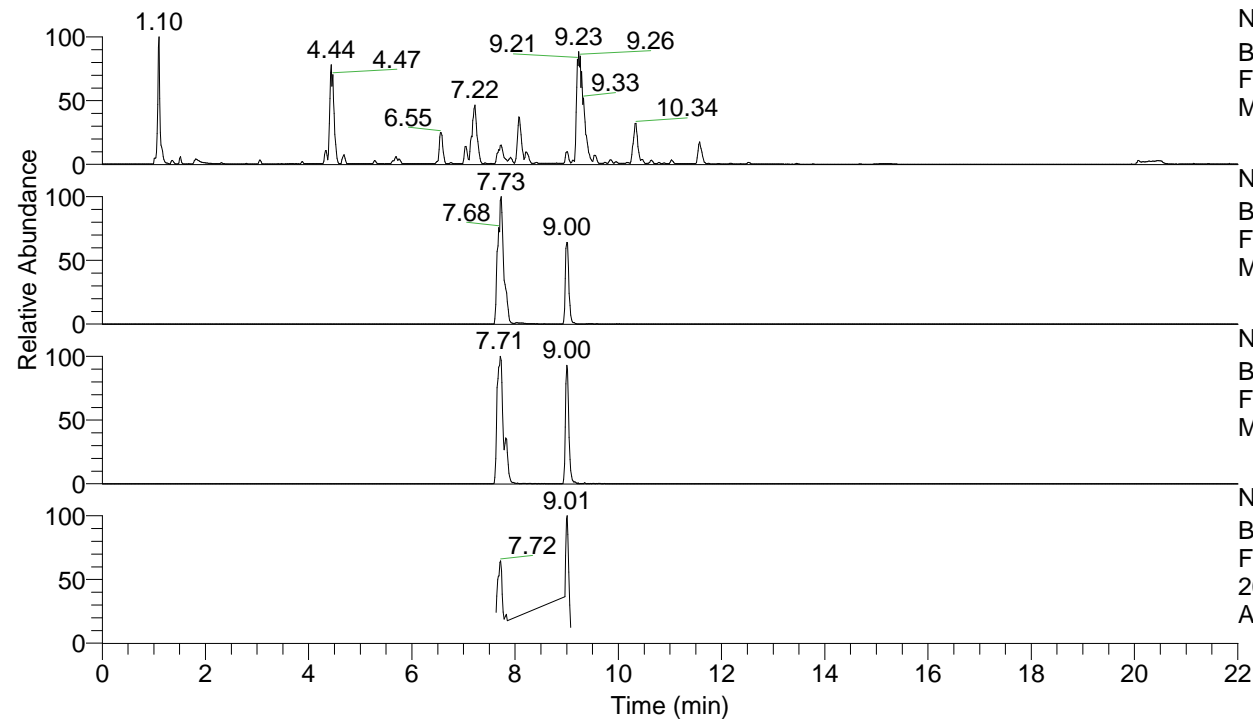


RT: 0.00 - 22.00



NL: 1.25E8  
 Base Peak m/z= 100.00000-1500.00000 F:  
 FTMS + p ESI Full ms [100.00-1500.00]  
 MS Apotteri

NL: 1.91E7  
 Base Peak m/z= 417.33209-417.33627 F:  
 FTMS + p ESI Full ms [100.00-1500.00]  
 MS Apotteri

NL: 1.86E6  
 Base Peak m/z= 209.16995-209.17205 F:  
 FTMS + p ESI Full ms [100.00-1500.00]  
 MS Apotteri

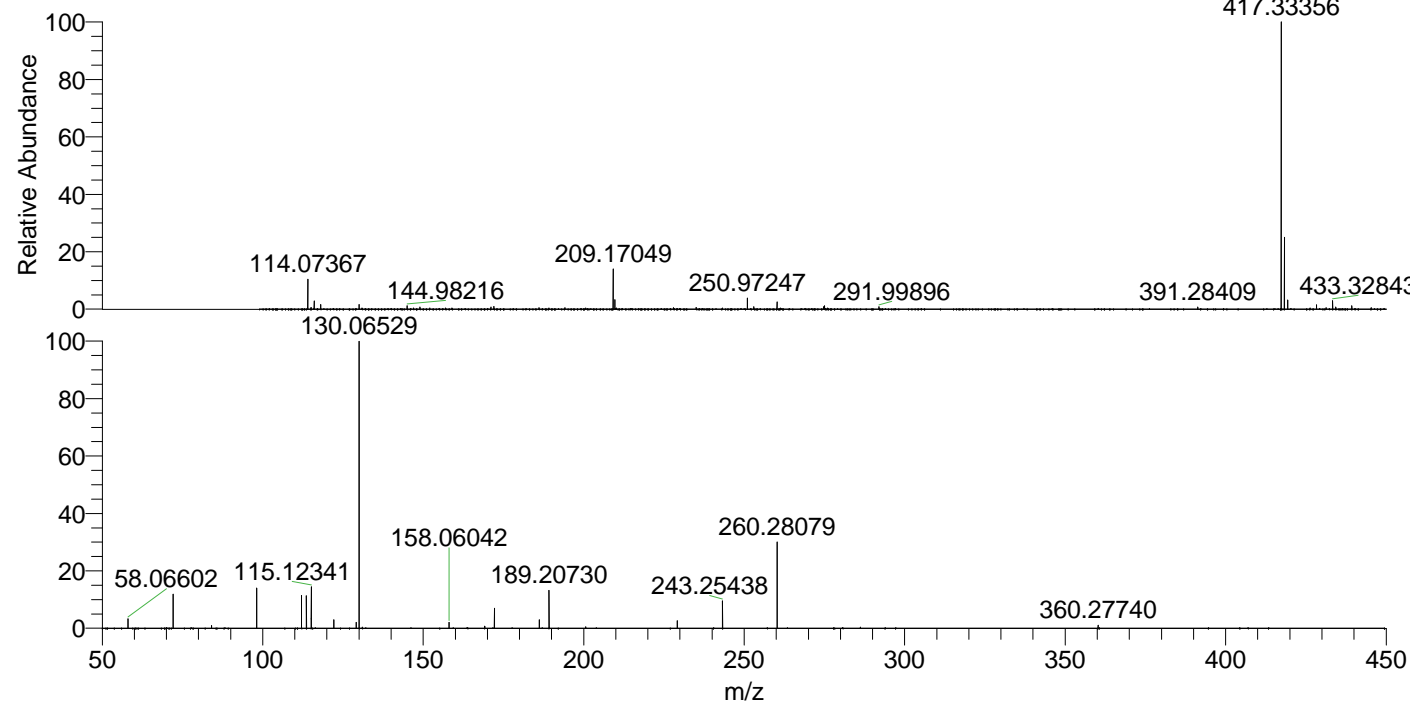
NL: 6.19E5  
 Base Peak m/z= 50.00000-1500.00000 F:  
 FTMS + p ESI d Full ms2  
 209.17@hcd35.00 [50.00-445.00] MS  
 Apotteri

Apotteri#3599-3627 RT: 8.97-9.04 AV: 6

F: FTMS + p ESI d Full ms2 209.17 ...

m/z= 50.00000-1000.00000

m/z	Intensity	Relative
58.06602	14123.9	3.25
72.08160	50723.7	11.68
84.08139	4217.4	0.97
98.09696	60537.2	13.94
112.11248	48815.8	11.24
113.61785	48132.0	11.09
115.12341	61509.1	14.17
122.13126	12676.3	2.92
129.13885	8975.9	2.07
130.06529	434178.1	100.00
158.06042	8850.1	2.04
169.17027	3266.5	0.75
172.18097	30062.0	6.92
186.19713	12417.5	2.86
189.20730	56186.6	12.94
229.13421	11603.5	2.67
243.25438	40639.8	9.36
260.28079	127748.1	29.42
360.27740	4243.8	0.98



NL: 1.18E7  
 Apotteri#3613 RT: 9.00  
 AV: 1 T: FTMS + p ESI  
 Full ms [100.00-1500.00]

NL: 4.22E5  
 Apotteri#3596-3632 RT:  
 8.97-9.04 AV: 6 F: FTMS  
 + p ESI d Full ms2  
 209.17@hcd35.00  
 [50.00-445.00]