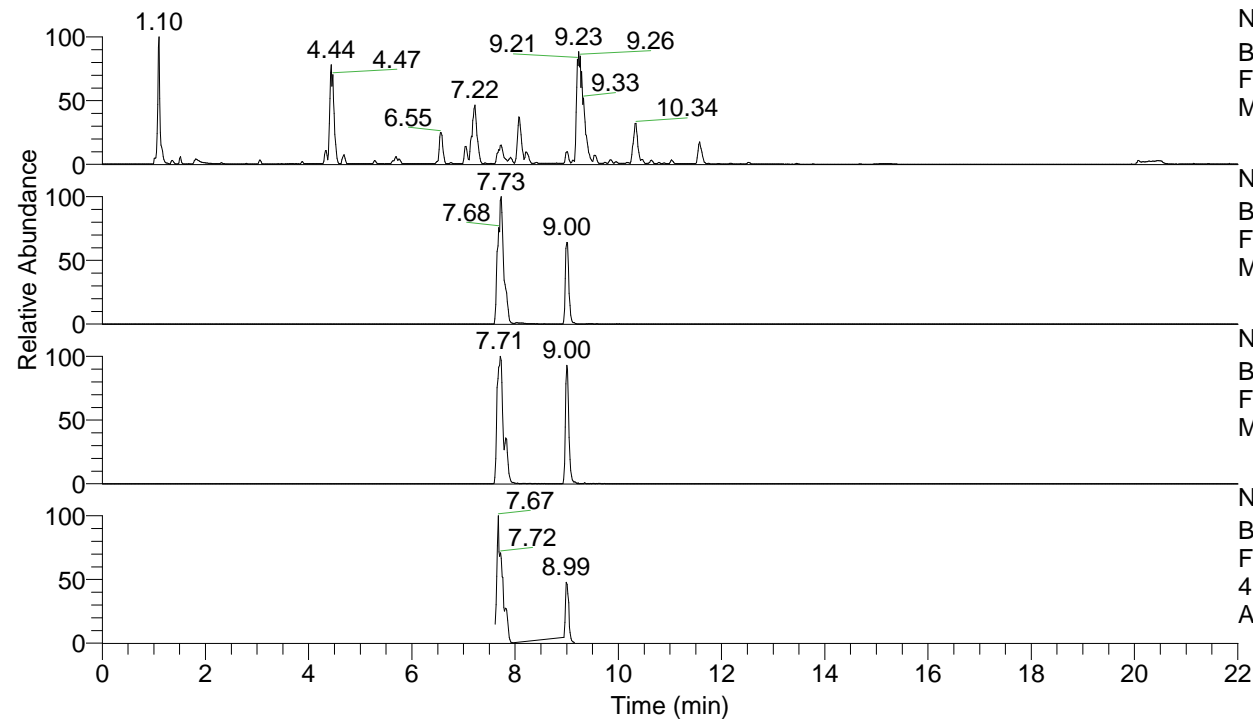


RT: 0.00 - 22.00



NL: 1.25E8
 Base Peak m/z= 100.00000-1500.00000 F:
 FTMS + p ESI Full ms [100.00-1500.00]
 MS Apotteri

NL: 1.91E7
 Base Peak m/z= 417.33209-417.33627 F:
 FTMS + p ESI Full ms [100.00-1500.00]
 MS Apotteri

NL: 1.86E6
 Base Peak m/z= 209.16995-209.17205 F:
 FTMS + p ESI Full ms [100.00-1500.00]
 MS Apotteri

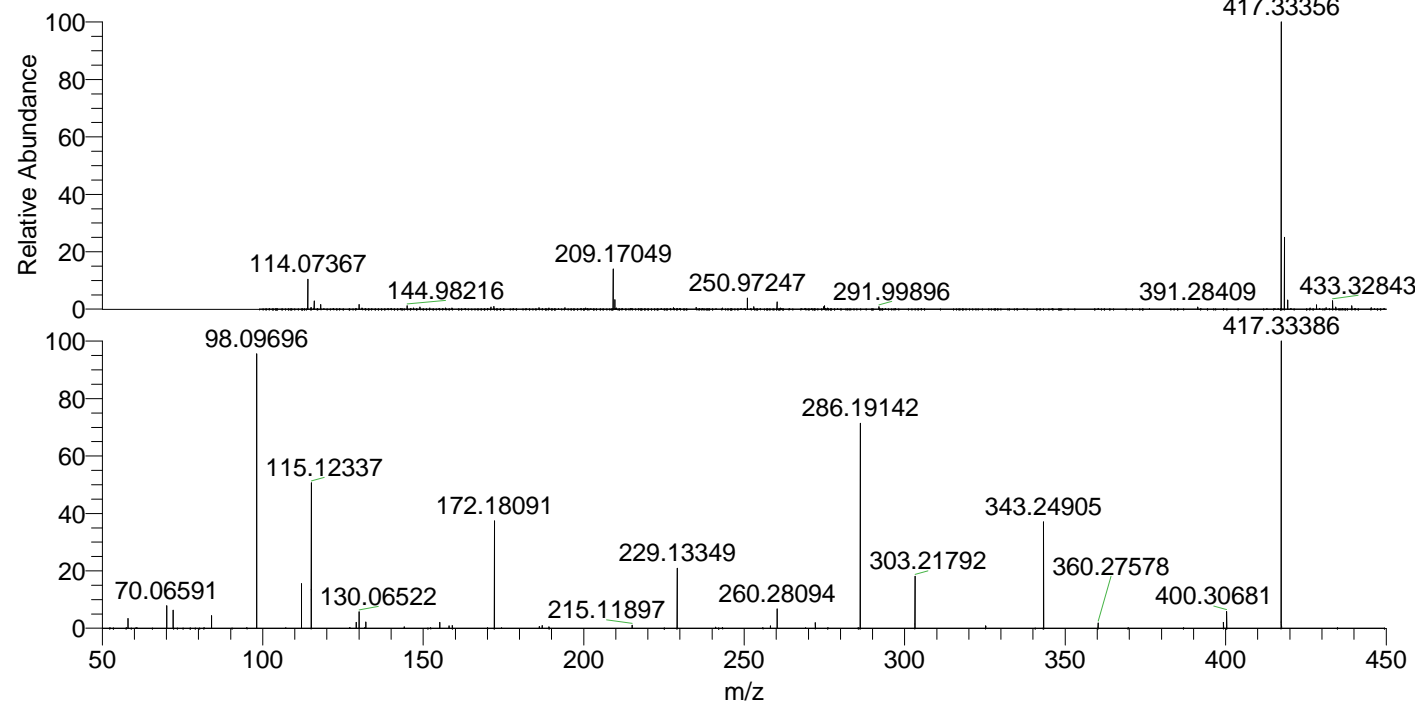
NL: 2.91E6
 Base Peak m/z= 50.00000-1500.00000 F:
 FTMS + p ESI d Full ms2
 417.33@hcd35.00 [50.00-445.00] MS
 Apotteri

Apotteri#3602-3632 RT: 8.98-9.05 AV: 6

F: FTMS + p ESI d Full ms2 417.33 ...

m/z= 50.00000-1000.00000

m/z	Intensity	Relative
58.06594	31114.9	3.19
70.06591	75573.3	7.74
72.08159	60127.4	6.16
84.08139	40737.6	4.17
98.09697	925441.4	94.77
112.11248	148467.1	15.20
115.12337	481780.0	49.34
129.13876	19696.4	2.02
130.06525	55099.1	5.64
132.14974	19411.6	1.99
155.15439	19437.1	1.99
158.06039	8062.8	0.83
159.09206	8020.1	0.82
172.18092	362619.5	37.13
186.19687	5630.8	0.58
187.08663	9450.9	0.97
189.20754	5478.3	0.56
215.11882	10560.3	1.08
229.13349	197317.6	20.21
258.16000	7370.3	0.75
260.28089	63296.0	6.48
272.17626	17695.4	1.81
286.19137	671571.0	68.77
303.21793	174461.5	17.87
325.23991	7053.2	0.72
343.24898	350500.3	35.89
360.27600	17078.6	1.75
399.32346	17768.0	1.82
400.30681	57092.0	5.85
417.33387	976492.6	100.00



NL: 1.18E7
 Apotteri#3613 RT: 9.00
 AV: 1 T: FTMS + p ESI
 Full ms [100.00-1500.00]

NL: 1.06E6
 Apotteri#3599-3629 RT:
 8.98-9.04 AV: 5 F: FTMS
 + p ESI d Full ms2
 417.33@hcd35.00
 [50.00-445.00]