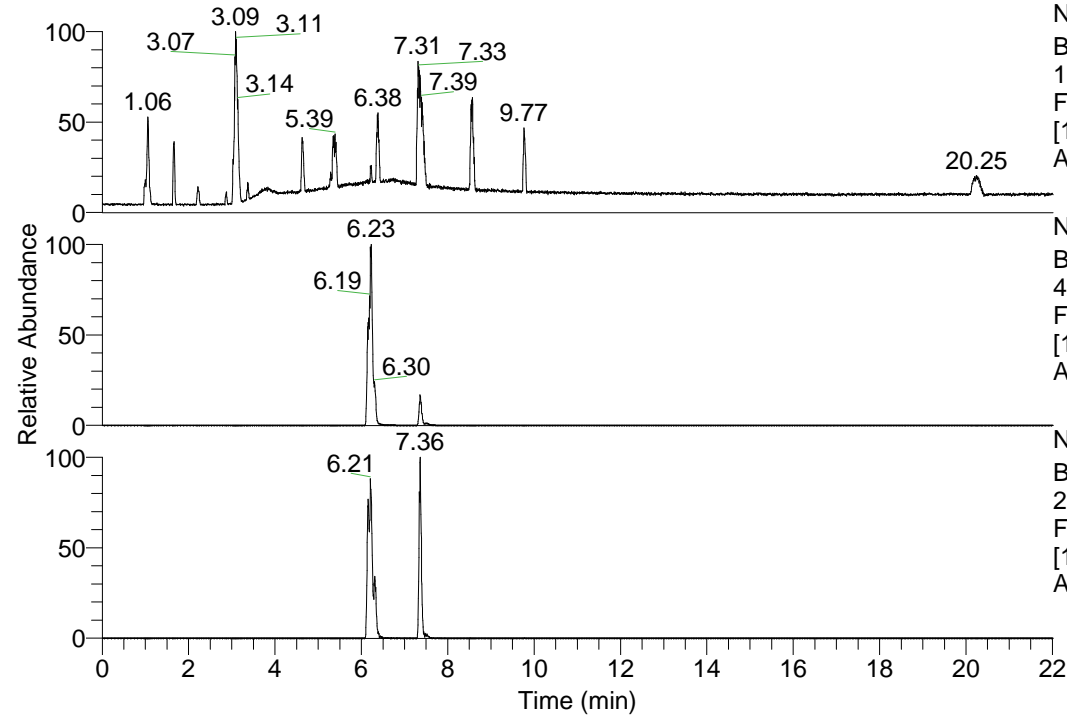


RT: 0.00 - 22.01



NL: 1.69E8
 Base Peak m/z=
 100.00000-1500.00000 F:
 FTMS + p ESI Full ms
 [100.00-1500.00] MS
 Apotteri_HDX

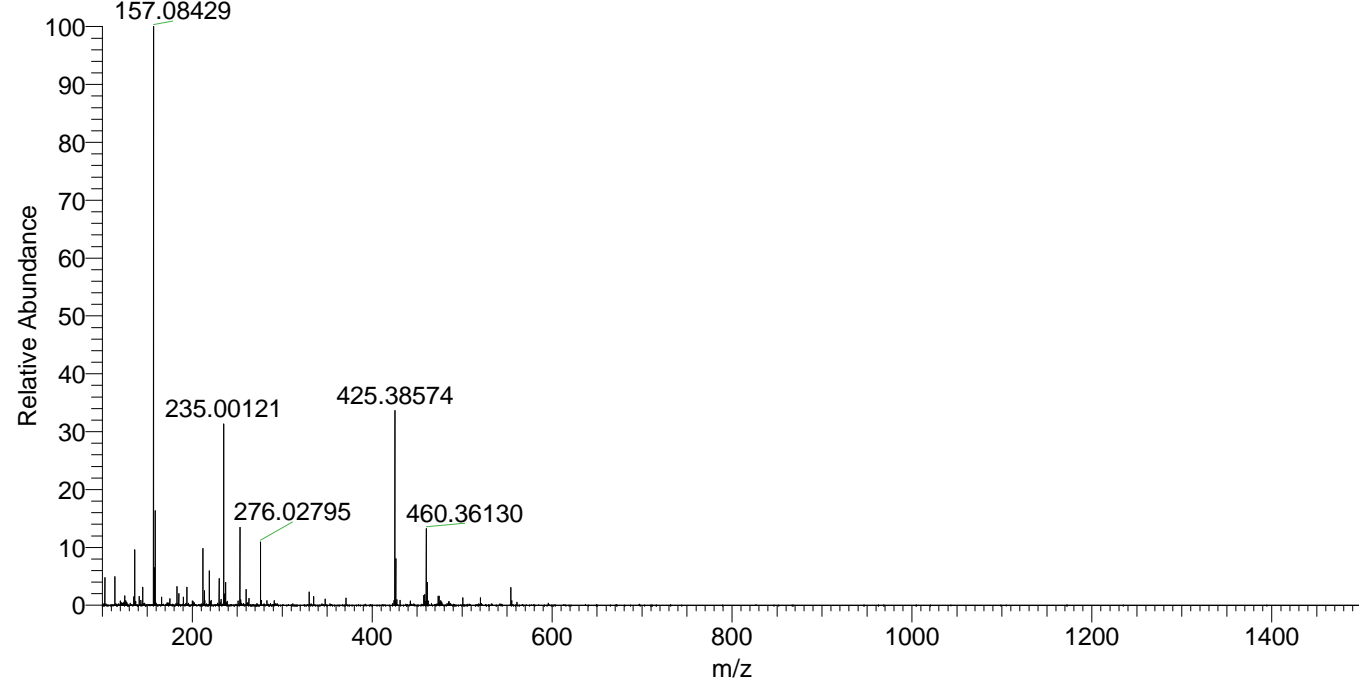
NL: 4.39E7
 Base Peak m/z=
 425.38227-425.38653 F:
 FTMS + p ESI Full ms
 [100.00-1500.00] MS
 Apotteri_HDX

NL: 2.43E6
 Base Peak m/z=
 213.69818-213.70032 F:
 FTMS + p ESI Full ms
 [100.00-1500.00] MS
 Apotteri_HDX

Apotteri_HDX#1004 RT: 6.30
 T: FTMS + p ESI Full ms [100.00-1500.00]
 m/z= 425.00000-426.00000

m/z	Intensity	Relative	Delta (ppm)	Composition
425.38574	9272330.0	100.00	0.81	C ₂₃ H ₃₅ ² H ₇ ON ₆
			-2.83	C ₂₃ H ₃₇ ² H ₆ ON ₆
			4.45	C ₂₃ H ₃₃ ² H ₈ ON ₆

Apotteri_HDX #1004 RT: 6.30 AV: 1 NL: 2.75E7
 T: FTMS + p ESI Full ms [100.00-1500.00]



Apotteri_HDX #1004 RT: 6.30 AV: 1 NL: 9.26E6
 T: FTMS + p ESI Full ms [100.00-1500.00]

