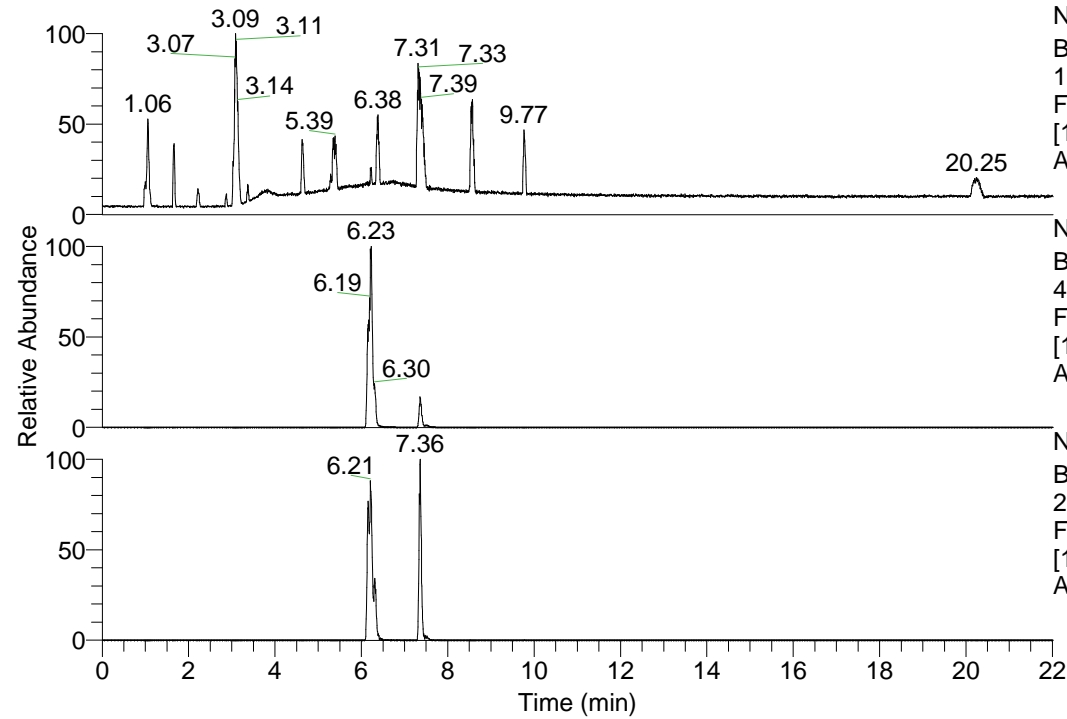


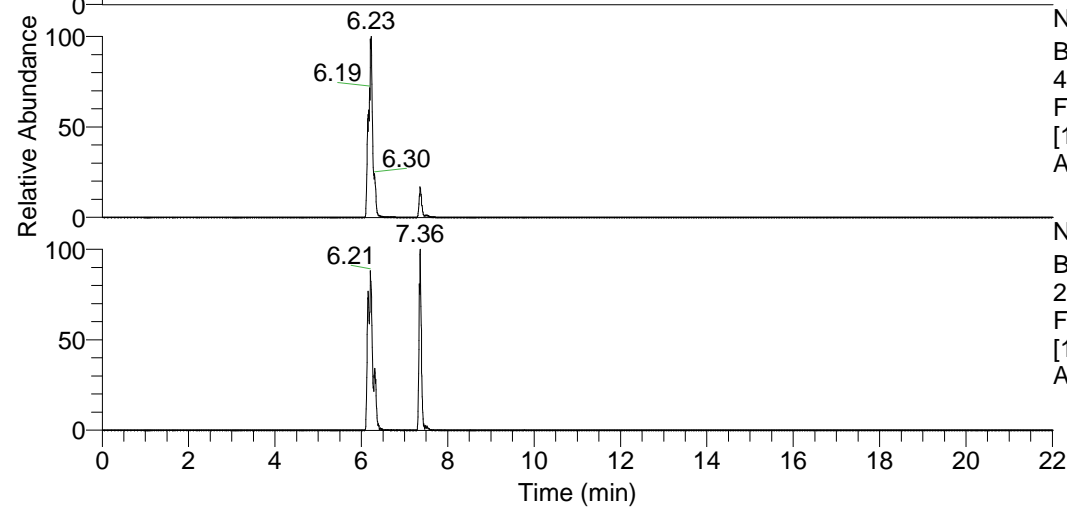
RT: 0.00 - 22.01



NL: 1.69E8
Base Peak m/z=
100.00000-1500.00000 F:
FTMS + p ESI Full ms
[100.00-1500.00] MS
Apotteri_HDX

Apotteri_HDX#978 RT: 6.15
T: FTMS + p ESI Full ms [100.00-1500.00]
m/z= 425.00000-426.00000

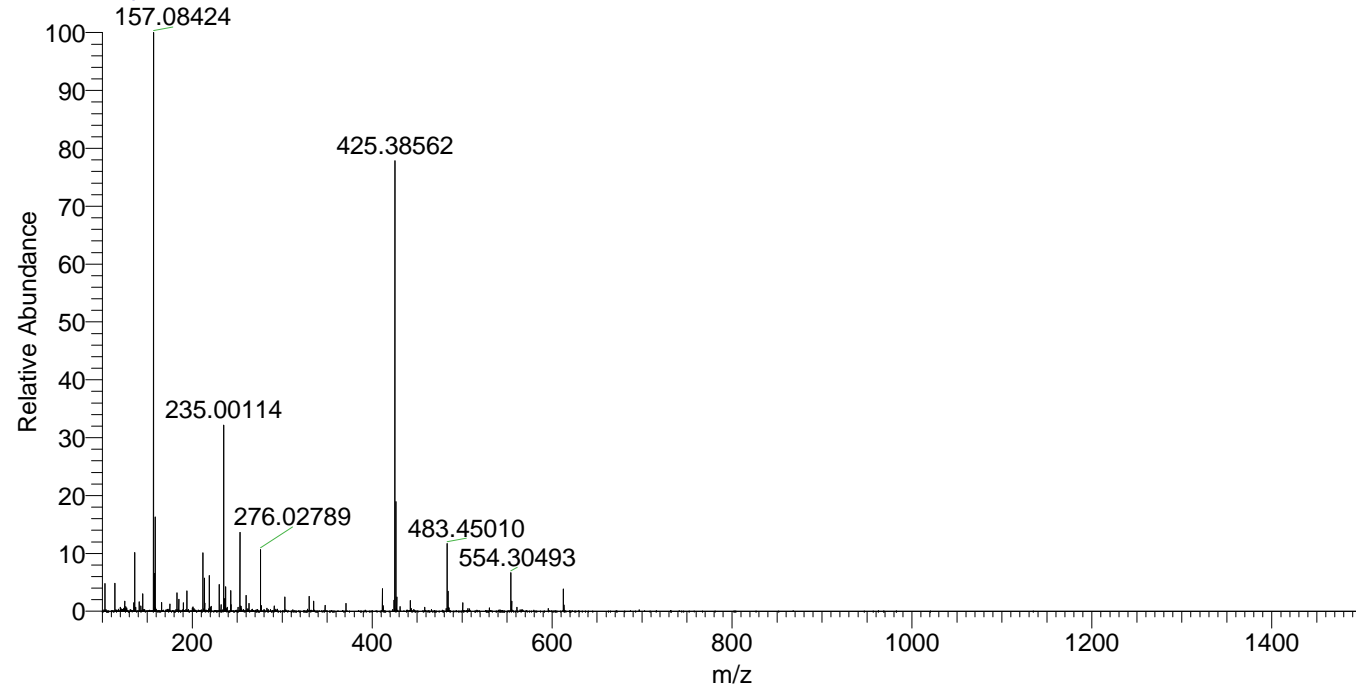
m/z	Intensity	Relative	Delta (ppm)	Composition
425.38562	23952378.0	100.00	0.52	C ₂₃ H ₃₅ ² H ₇ O ₂ N ₆
			-3.12	C ₂₃ H ₃₇ ² H ₆ O ₂ N ₆
			4.16	C ₂₃ H ₃₃ ² H ₈ O ₂ N ₆



NL: 4.39E7
Base Peak m/z=
425.38227-425.38653 F:
FTMS + p ESI Full ms
[100.00-1500.00] MS
Apotteri_HDX

NL: 2.43E6
Base Peak m/z=
213.69818-213.70032 F:
FTMS + p ESI Full ms
[100.00-1500.00] MS
Apotteri_HDX

Apotteri_HDX #978 RT: 6.15 AV: 1 NL: 3.05E7
T: FTMS + p ESI Full ms [100.00-1500.00]



Apotteri_HDX #978 RT: 6.15 AV: 1 NL: 2.38E7
T: FTMS + p ESI Full ms [100.00-1500.00]

